

Tunbridge Wells Borough Council

Infrastructure Funding Statement

2022/23



Contents

- 1. Introduction..... 3
- 2. S106 Obligations agreed during 2022/23 5
- 3. S106 Contributions held at the start of 2022/23 14
- 4. S106 Contributions received in 2022/23..... 24
- 5. S106 Contributions spent, transferred or delivered during 2022/23. 22
- 5. S106 Projects examples..... 30

Introduction

The Infrastructure Funding Statement (IFS) is an annual report published by Tunbridge Wells Borough Council (TWBC) that provides a summary of all financial and non-financial developer contributions relating to Section 106 (S106) legal agreements within the borough of Tunbridge Wells within a given financial year. This document details the financial contributions secured in the financial year 2022/23.

Section 106 Planning Obligations

Planning obligations known as S106 agreements are legal agreements that can be attached to a planning permission to mitigate the impact of the development. Obligations can only be sought when they are directly related, of reasonable related scale and type to the development and are necessary to make the development acceptable in planning terms. S106 obligations can be both financial and non-financial and can be provided on-site, such as through the provision of affordable housing, or off-site as financial payments, such as through a financial contribution to provide for a specific piece of infrastructure.

Throughout this document the following definitions will be used:

- **Agreed** - This refers to contributions, monetary and non-monetary that have been agreed within a signed and completed S106 legal document.
- **Received** - This refers to monetary contributions received that have been transferred to TWBC.
- **Allocated** - This refers to monetary contributions that have been both received and allocated to a specific project. This includes both capital project allocation and non-capital allocation as not all financial contributions are spent through capital projects. Most contributions have specific uses detailed in their S106s so money often comes in and is already ear-marked for specific work. If this is for a specific piece of work this is detailed as “allocated”.
- **Spent/Transferred** - This refers to contributions, monetary or non-monetary that have been spent or delivered to a third party.
- **TWBC**- Tunbridge Wells Borough Council
- **KCC**- Kent County Council
- **NHS**- National Health Service
- **This financial year** - Unless stated otherwise this refers to the 2022/23 financial year that spans from 01/04/2022 – 31/03/2023

S106 Contributions agreed during 2022/23

Detailed in this section are the financial and non-financial obligations agreed during the 2022/23 financial year. All figures in this section are without indexation which is added at the time of payment. Section 106s connected to applications that have been appealed and dismissed or superceded are not included. A total of **£4,050,711.21** financial contributions (not including indexation) were agreed in the 2022/23 financial year.

21/00665/FULL Land rear of 7-9 Station Road Paddock Wood

INFRASTRUCTURE TYPE	CONTRIBUTION DESCRIPTION	RECEIVING BODY	AMOUNT (£S)	UNITS
Transport and travel	Public realm	TWBC	25,100.00	-
Community Facilities	Community learning	KCC	229.88	-
Community Facilities	Library	KCC	776.30	-
Education	Secondary education	KCC	11,350.00	-
Other	Waste	KCC	2,571.38	-
Community Services	Youth services	KCC	917.00	-
Community Services	Social care	KCC	2,056.32	-

21/03661/FULL 123 Silverdale Road, Tunbridge Wells

INFRASTRUCTURE TYPE	CONTRIBUTION DESCRIPTION	RECEIVING BODY	AMOUNT (£S)	UNITS
Open Space & Leisure	Recreation	TWBC	14,851.98	-
Community Services	Community Learning/Social Care / Libraries	KCC	6,120.94	-
Education	Secondary education	KCC	26,105.00	-
Other	Waste	KCC	2,571.38	-
Community Services	Youth services	KCC	917.00	-

19/01600/FULL Owlneat Wood, Tonbridge Road, Pembury

INFRASTRUCTURE TYPE	CONTRIBUTION DESCRIPTION	RECEIVING BODY	AMOUNT (£S)	UNITS
HIGHWAYS	Highways	KCC	18,500.00	-

21/03299/REM Brick Kiln Fram, Cranbrook

INFRASTRUCTURE TYPE	CONTRIBUTION DESCRIPTION	RECEIVING BODY	AMOUNT (£S)	UNITS
Other	Creation Agreement - Footpath	KCC	2,700.00	-

21/03345/FULL St. Peters Primary School playgrd. Tunbridge Wells

INFRASTRUCTURE TYPE	CONTRIBUTION DESCRIPTION	RECEIVING BODY	AMOUNT (£S)	UNITS
Transport and Travel	Parking	TWBC	5,000.00	-
Highways	Highways	KCC	6,209.00	-

21/04191/FULL - 5 St. Johns Road, Tunbridge Wells

INFRASTRUCTURE TYPE	CONTRIBUTION DESCRIPTION	RECEIVING BODY	AMOUNT (£S)	UNITS
Open Space and Leisure	Adult and Youth Recreation	TWBC	23,727.00	-
Open Space and Leisure	Childrens Recreation	TWBC	19,587.50	-
Open Space and Leisure	Community (Hub)	KCC	5,246.52	-
Education	Secondary Education	KCC	9,080.00	-
Other	Waste	KCC	2,204.04	-
Community Services	Youth services	KCC	786.00	-

21/02886/FULL Ashurst Place, Langton Green

INFRASTRUCTURE TYPE	CONTRIBUTION DESCRIPTION	RECEIVING BODY	AMOUNT (£S)	UNITS
Open Space and Leisure	Public realm	TWBC	8,190.97	-
Open Space and Leisure	Community Learning	KCC	147.78	-
Community Facilities	Libraries	KCC	499.05	-
Community Services	Social Care	KCC	1,321.92	-
Education	Secondary Education	KCC	17,025.00	-
Other	Waste	KCC	1,653.03	-
Community Services	Youth services	KCC	589.50	-

21/03298/FULL 15-16 Eridge Road, Royal Tunbridge Wells

INFRASTRUCTURE TYPE	CONTRIBUTION DESCRIPTION	RECEIVING BODY	AMOUNT (£S)	UNITS
Affordable Housing	Affordable housing	TWBC	984,000.00	
Open Space and Leisure	Commons	TWBC	8,000.00	
Other	Commons conservators projects	TWBC	42,000.00	
Health	NHS	TWBC	28,656.00	
Transport and travel	Parking	TWBC	10,000.00	
Open Space and Leisure	Community	KCC	17,488.40	
Other	Waste	KCC	7,346.80	

21/01638/FULL Four Acres, Frittenden

INFRASTRUCTURE TYPE	CONTRIBUTION DESCRIPTION	RECEIVING BODY	AMOUNT (£S)	UNITS
Open Space and Leisure	Adult and Youth Recreation	TWBC	15,948.94	
Other	Biodiversity Net Gain	TWBC	18,000.00	
Health	NHS Healthcare	TWBC	20,412.00	
Community Facilities	Cranbrook Cultural Hub	KCC	9,651.49	
Education	Primary Education	KCC	106,766.00	
Other	Waste	KCC	4,522.00	

Community Services	Youth Services	KCC	1,506.50	
Affordable housing	Affordable housing	-	-	9

21/03395/FULL Little Cowden Farm, Brenchley

INFRASTRUCTURE TYPE	CONTRIBUTION DESCRIPTION	RECEIVING BODY	AMOUNT (£S)	UNITS
Community Facilities	Community Learning	KCC	82.10	
Community Facilities	Libraries	KCC	277.25	
Education	Secondary Education	KCC	22,700.00	
Community facilities	Social Care	KCC	734.40	
Other	Waste	KCC	918.35	
Community Services	Youth services	KCC	327.50	

21/00519/FULL Quaker Lane, Land off Angley Road, Cranbrook

INFRASTRUCTURE TYPE	CONTRIBUTION DESCRIPTION	RECEIVING BODY	AMOUNT (£S)	UNITS
Health	NHS Healthcare	TWBC	36,324.00	
Open Space and Leisure	Children's recreation	TWBC	55,603.99	
Community facilities	Community Learning, social care, library (Cranbrook hub)	KCC	15,416.80	
Education	Primary education	KCC	140,420.50	
Community Facilities	Youth services	KCC	2,292.50	
Highways	Highways	KCC	35,000.00	
Other	Waste	KCC	4,522.00	
Affordable housing	Affordable housing	-	-	14

21/01862/FULL (DOV) Church Farm, Paddock Wood

INFRASTRUCTURE TYPE	CONTRIBUTION DESCRIPTION	RECEIVING BODY	AMOUNT (£S)	UNITS
Transport and Travel	Active travel	TWBC	30,000.00	
Open Space and Leisure	Community Centre	TWBC	61,560.00	
Open Space and Leisure	Indoor sport	TWBC	54,720.00	
Health	NHS Healthcare	TWBC	60,768.00	
Open Space and Leisure	Outdoor sport	TWBC	44,700.00	

Community Facilities	Community learning	KCC	985.20	
Community Facilities	Library	KCC	3,327.00	
Education	Nursery	KCC	30,846.60	
Education	Primary Education BUILD	KCC	408,000.00	
Education	Primary Education LAND	KCC	81,043.20	
Education	Secondary Education	KCC	272,400.00	
Community Services	Social care	KCC	8,812.80	
Other	Waste	KCC	11,020.20	
Community Facilities	Youth services	KCC	3,930.00	
Affordable houses	-	-	-	24

22/02304/FULL Former ABC Cinema Site, Tunbridge Wells

INFRASTRUCTURE TYPE	CONTRIBUTION DESCRIPTION	RECEIVING BODY	AMOUNT (£S)	UNITS
Transport and Travel	Car Club	TWBC	46,670.00	
Transport and Travel	Sustainable Transport Measures	TWBC	50,000.00	
Other	Tunbridge Wells Common	TWBC	33,200.00	
Community Facilities	Cultural Learning Hub	KCC	72,576.86	
Other	Travel Plan Monitoring Fee	KCC	948.00	
Other	Waste	KCC	30,489.22	

22/01929/OUT Swatlands Farm, Paddock Wood

INFRASTRUCTURE TYPE	CONTRIBUTION DESCRIPTION	RECEIVING BODY	AMOUNT (£S)	UNITS
Other	Biodiversity Improvements	TWBC	70,200.00	
Transport and Travel	Cycle and Walking Improvement.	TWBC	249,892.41	
Transport and Travel	Public Transport Improvements	TWBC	96,256.45	
Transport and Travel	Highways	KCC	16,042.74	

21/03914/FULL St.Georges Institute, Sissinghurst

INFRASTRUCTURE TYPE	CONTRIBUTION DESCRIPTION	RECEIVING BODY	AMOUNT (£S)	UNITS
Community Facilities	Cranbrook Cultural Hub	KCC	8,369.12	
Education	Primary Education	KCC	88,198.00	
Transport and Travel	PROW	KCC	17,500.00	
Education	Secondary Education	KCC	86,260.00	
Other	Waste	KCC	2,454.80	
Community Facilities	Youth Services	KCC	1,244.50	

22/01409/FULL Hermes House, Tunbridge Wells

INFRASTRUCTURE TYPE	CONTRIBUTION DESCRIPTION	RECEIVING BODY	AMOUNT (£S)	UNITS
Open Space and Leisure	Hawkenbury Football Centre	TWBC	75,495.00	
Open Space and Leisure	St. Johns Rec.Ground Beltring Road	TWBC	44,659.50	
Transport and Travel	Cycling and Walking Infrastructure	TWBC	21,500.00	
Health	NHS Kent & Medway Clinical Refurbishments	TWBC	25,776.00	
Community Facilities	Tunbridge Wells Cultural Hub	KCC	18,800.03	
Education	Bennett Memorial School Expansion	KCC	21,565.00	
Other	Upgrade Transfer Street	KCC	7,897.81	
Community facilities	Youth Services	KCC	2,816.50	

22/01422/FULL Manor Court Farm Ashurst Road

INFRASTRUCTURE TYPE	CONTRIBUTION DESCRIPTION	RECEIVING BODY	AMOUNT (£S)	UNITS
Community Facilities	Tunbridge Wells Cultural Hub	KCC	3,060.47	
Education	Secondary Education	KCC	31,780.00	
Other	Waste	KCC	1,285.69	
Community facilities	Youth Services	KCC	458.50	

22/02640/FULL - Marle Place Road Brenchley

INFRASTRUCTURE TYPE	CONTRIBUTION DESCRIPTION	RECEIVING BODY	AMOUNT (£S)	UNITS
Community Facilities	Community Learning	KCC	82.1	
Community Services	Libraries Contribution - Brenchley mobile library	KCC	277.25	
Education	Paddock Wood Primary Education	KCC	23,210.00	
Education	Secondary Education	KCC	22,700.00	
Community Services	Social Care	KCC	734.40	
Other	Waste	KCC	918.35	
Community Facilities	Youth Services	KCC	327.50	

S106 Contributions Held at the start of 2022/23 financial year.

Detailed in this section are the financial contributions, including indexation, collected prior to the start of the 2022/23 year that had not yet been spent or transferred to a third party at the start of the 2022/23 year.

A total of **£8,716,880.35** financial contributions were held at the start of the 2022/23 financial year; **£8,068,818.63** TWBC contributions and **£648,061.72** KCC and NHS contributions.

TWBC Section 106 Contributions Held.

Funding category	Funding details	Amount (£s)	Project allocation status at start of 2022/23	Project allocation status at end of 2022/23
Transport & Travel	Cycleways / Highways & Transport	15,000.00	Not Allocated	Not Allocated
Community Facilities	Public Art	12,000.00	Grosvenor Bridge Art	Grosvenor Bridge Art
Other	Air Quality & Renewable Energy	14,153.24	Not Allocated	Not Allocated
Open Space & Leisure	Childrens Playspace	13,715.17	Dunorlan Play Park	Dunorlan Play Park
Open Space & Leisure	Youth & Adult Rec Space	44,449.00	Hilbert Football Pitch Drainage	Hilbert Football Pitch Drainage
Open Space & Leisure	Youth & Adult Rec Space	1,542.00	Castle Hill cricket net	Castle Hill cricket net
Transport & Travel	Car Parking	10,117.50	Not Allocated	Not Allocated
Transport & Travel	Cycleways / Highways & Transport	25,871.15	Not Allocated	Not Allocated
Other	Air Quality & Renewable Energy	10,348.46	Not Allocated	Not Allocated

Open Space & Leisure	Youth & Adult Rec Space	165,740.56	Acquisition Sites Sports Strategy	Acquisition Sites Sports Strategy
Open Space & Leisure	Youth & Adult Rec Space	35,000.00	Bayham Drainage	Bayham Drainage
Open Space & Leisure	Youth & Adult Rec Space	75,000.00	Bayham Changing Facilities	Bayham Changing Facilities
Open Space & Leisure	Youth & Adult Rec Space	303,644.78	Acquisition Sites Sports Strategy	Acquisition Sites Sports Strategy
Affordable Housing	Affordable Housing	613,056.00	Hop Pocket Inn 14 units	Hop Pocket Inn 14 units
Affordable Housing	Affordable Housing	865,525.85	Not Allocated	Not Allocated
Open space and leisure	Calverly tennis court and gym	13,780.00	Calverly tennis court and gym	Calverly tennis court and gym
Open space and leisure	Calverly tennis court and gym	269.17	Calverly tennis court and gym	Calverly tennis court and gym
Transport & Travel	Car Parking	28,911.84	Not Allocated	Not Allocated
Transport & Travel	Cycleways / Highways & Transport	129,900.55	Knights Wood Bus Service	Knights Wood Bus Service
Transport & Travel	Cycleways / Highways & Transport	45,137.19	Cycle Way Lighting, Tunbridge Wells	Cycle Way Lighting, Tunbridge Wells
Transport & Travel	Cycleways / Highways & Transport	119,471.46	Knights Wood Bus Service	Knights Wood Bus Service
Open Space & Leisure	Youth & Adult Rec Space	355,852.16	Colebrook Recreation Grd	Colebrook Recreation Grd
Transport & Travel	Cycleways / Highways & Transport	108,640.46	Knights Wood Bus Service	Knights Wood Bus Service
Transport & Travel	Cycleways / Highways & Transport	31,255.78	Knights Wood Bus Service	Knights Wood Bus Service
Open Space & Leisure	Youth & Adult Rec Space	4,955.21	Dunorlan Play Park	Dunorlan Play Park
Open Space & Leisure	Youth & Adult Rec Space	8,628.00	Calverley Tennis Court & Gym	Calverley Tennis Court & Gym

Open Space & Leisure	Youth & Adult Rec Space	58,435.88	Acquisition Sites Sports Strategy	Acquisition Sites Sports Strategy
Affordable Housing	Affordable Housing	50,526.64	Affordable Housing Grant	Affordable Housing Grant
Transport & Travel	Cycleways / Highways & Transport	15,511.02	Cycle Ways, Tunbridge Wells	Cycle Ways, Tunbridge Wells
Transport & Travel	Cycleways / Highways & Transport	36,125.58	21st Century Way Cycle Path	21st Century Way Cycle Path
Community Facilities	Public Art	10,034.88	Not Allocated	Not Allocated
Open Space & Leisure	Childrens Playspace	8,113.47	Not Allocated	Not Allocated
Open Space & Leisure	Youth & Adult Rec Space	10,859.54	Southwood Road Drainage	Southwood Road Drainage
Open Space & Leisure	Youth & Adult Rec Space	10,486.32	Not Allocated	Not Allocated
Other	Air Quality & Renewable Energy	5,709.22	Not Allocated	Not Allocated
Open Space & Leisure	Youth & Adult Rec Space	54,636.24	Acquisition Sites Sports Strategy	Acquisition Sites Sports Strategy
Transport & Travel	Car Parking	25,000.00	Not Allocated	Not Allocated
Other	Air Quality & Renewable Energy	15,088.95	Not Allocated	Not Allocated
Open Space & Leisure	Youth & Adult Rec Space	8,628.00	Acquisition Sites Sports Strategy	Acquisition Sites Sports Strategy
Transport & Travel	Car Parking	2,020.57	Eridge Road parkings restrictions	Eridge Road parkings restrictions
Open Space & Leisure	Childrens Playspace	7,928.65	Not allocated	Not allocated
Green Infrastructure	Reptile & Ecology	9,851.27	Habitat Protection TW Common	Habitat Protection TW Common
Open Space & Leisure	Youth & Adult Rec Space	136,162.10	Acquisition Sites Sports Strategy	Acquisition Sites Sports Strategy

Transport & Travel	Cycleways / Highways & Transport	26,024.31	Not Allocated	Not Allocated
Other	Air Quality & Renewable Energy	21,686.92	Car Club Tunbridge Wells	Car Club Tunbridge Wells
Open Space & Leisure	Youth & Adult Rec Space	143,323.14	Hawkenbury Recreation Grd / Rusthall Recreation Grd	Hawkenbury Recreation Grd / Rusthall Recreation Grd
Affordable Housing	Affordable Housing	389,171.93	Not Allocated	Not Allocated
Transport & Travel	Cycleways / Highways & Transport	20,567.82	Cycle Parking, Paddock Wood	Cycle Parking, Paddock Wood
Green Infrastructure	Reptile & Ecology	3,000.00	Strikes Woodland	Strikes Woodland
Open Space & Leisure	Youth & Adult Rec Space	48,442.98	Horsmonden Sports Ground	Horsmonden Sports Ground
Open Space & Leisure	Childrens Playspace	49,589.38	Locket Green Horsmonden Play Equipment	Locket Green Horsmonden Play Equipment
Green Infrastructure	Reptile & Ecology	500.00	Hop Pickers Line Heritage Grp	Hop Pickers Line Heritage Grp
Affordable Housing	Affordable Housing	55,976.64	Not Allocated	Not Allocated
Open Space & Leisure	Youth & Adult Rec Space	31,393.60	Calverley Grounds Gym Equip.	Calverley Grounds Gym Equip.
Open Space & Leisure	Childrens Playspace	21,844.85	Showfields Toddler Play Area	Showfields Toddler Play Area
Open Space & Leisure	Youth & Adult Rec Space	32,073.96	Calverley Grounds Gym Equip.	Calverley Grounds Gym Equip.
Open Space & Leisure	Childrens Playspace	22,318.27	Showfields Toddler Play Area	Showfields Toddler Play Area
Affordable Housing	Affordable Housing	159,431.14	Not Allocated	Not Allocated
Affordable Housing	Affordable Housing	162,574.85	Not Allocated	Not Allocated
Open Space & Leisure	Childrens Playspace	4,623.08	Market Heath Play Area	Market Heath Play Area

Transport & Travel	Cycleways / Highways & Transport	20,304.81	21st Century Way Cycle Path	22nd Century Way Cycle Path
Community Facilities	Public Art	2,137.35	Not allocated	Not allocated
Open Space & Leisure	Youth & Adult Rec Space	28,878.07	Acquisition Sites Sports Strategy	Acquisition Sites Sports Strategy
Affordable Housing	Affordable Housing	292,250.00	Affordable Housing Grant	Affordable Housing Grant
Affordable Housing	Affordable Housing	1,979.46	Not allocated	Not allocated
Affordable Housing	Affordable Housing	299,188.39	Not allocated	Not allocated
Open Space & Leisure	Youth & Adult Rec Space	29,367.96	Acquisition Sites Sports Strategy	Acquisition Sites Sports Strategy
Affordable Housing	Affordable Housing	464,099.08	Not allocated	Not allocated
Community Facilities	Public Art	5,600.46	Not allocated	Not allocated
Open Space & Leisure	Youth & Adult Rec Space	27,138.72	Calverley Grounds Tennis Fencing, Gym Equip.	Calverley Grounds Tennis Fencing, Gym Equip.
Open Space & Leisure	Childrens Playspace	27,915.74	Showfields Toddler Play Area	Showfields Toddler Play Area
Transport & Travel	Cycleways / Highways & Transport	20,121.95	Not allocated	Not allocated
Affordable Housing	Affordable Housing	150,914.63	Not allocated	Not allocated
Open Space & Leisure	Youth & Adult Rec Space	49,809.35	Hawkenbury Recreation Grd	Hawkenbury Recreation Grd
Transport & Travel	Car Parking	8,121.09	Not allocated	Not allocated
Open Space & Leisure	Youth & Adult Rec Space	76,939.27	Hawkenbury Recreation Grd	Hawkenbury Recreation Grd
Other	Air Quality & Renewable Energy	23,673.62	Car Club	Car Club

Open Space & Leisure	Youth & Adult Rec Space	1,450.32	Not allocated	Not allocated
Open Space & Leisure	Youth & Adult Rec Space	9,033.44	Not allocated	Not allocated
Open Space & Leisure	Youth & Adult Rec Space	27,100.33	Heartenoak Play Area Hawkhurst	Heartenoak Play Area Hawkhurst
Open Space & Leisure	Youth & Adult Rec Space	217,955.06	Hawkenbury Recreation Ground	Hawkenbury Recreation Ground
Open Space & Leisure	Youth & Adult Rec Space	249,570.87	Hawkenbury Recreation Ground	Hawkenbury Recreation Ground
Open Space & Leisure	Youth & Adult Rec Space	27,082.24	Hawkenbury Recreation Ground	Hawkenbury Recreation Ground
Other	Air Quality & Renewable Energy	805.94	Car Club	Car Club
Affordable Housing	Affordable Housing	302,591.49	Not allocated	Not allocated
Open Space & Leisure	Youth & Adult Rec Space	2,409.16	Hawkenbury Recreation Ground Car Park	Hawkenbury Recreation Ground Car Park
Open Space & Leisure	Youth & Adult Rec Space	599.00	Hawkenbury Recreation Ground Car Park	Hawkenbury Recreation Ground Car Park
Open Space & Leisure	Youth & Adult Rec Space	6,770.56	Hawkenbury Recreation Ground	Hawkenbury Recreation Ground
Other	Air Quality & Renewable Energy	201.49	Car Club	Car Club
Affordable Housing	Affordable Housing	100,863.83	Not allocated	Not allocated
Transport & Travel	Car Parking	2,006.13	Not allocated	Not allocated
Transport & Travel	Cycleways / Highways & Transport	100,655.21	Cranbrook Bus Service	Cranbrook Bus Service
Open Space & Leisure	Youth & Adult Rec Space	13,325.80	Jubilee Field Sissinghurst Play Equipment	Jubilee Field Sissinghurst Play Equipment

Open Space & Leisure	Youth & Adult Rec Space	10,716.98	Lower Green Recreation Grd, Pembury	Lower Green Recreation Grd, Pembury
Open Space & Leisure	Childrens Playspace	31,697.41	Lower Green Recreation Grd, Pembury	Lower Green Recreation Grd, Pembury
Transport & Travel	Car Parking	2,817.87	Not allocated	Not allocated
Affordable Housing	Affordable Housing	397,541.44	Hawkhurst Priority Area	Hawkhurst Priority Area
Open Space & Leisure	Youth & Adult Rec Space	5,148.49	Cranbrook Community Centre	Cranbrook Community Centre
Open Space & Leisure	Childrens Playspace	14,958.13	Ball Field Play Area Cranbrook	Ball Field Play Area Cranbrook
Open Space & Leisure	Youth & Adult Rec Space	62,888.53	Not allocated	Not allocated
Green Infrastructure	Reptile & Ecology	48,600.00	Not allocated	Not allocated
Open Space & Leisure	Youth & Adult Rec Space	13,661.00	Southborough Hub Sports Pavillion	Southborough Hub Sports Pavillion
Affordable Housing	Affordable Housing	90,092.48	Not allocated	Not allocated
Transport & Travel	Car Parking	2,560.98	Not allocated	Not allocated
Affordable Housing	Affordable Housing	51,856.46	Not allocated	Not allocated
Transport & Travel	Cycleways / Highways & Transport	13,496.44	Cycle Parking, Paddock Wood	Cycle Parking, Paddock Wood
Green Infrastructure	Reptile & Ecology	22,294.87	Foal Hurst Wood	Foal Hurst Wood

KCC and NHS Section 106 Contributions Held by TWBC.

Funding Category	Funding Details	Amount (£s)	Destination of contribution
Health	Rowan Tree surgery, branch of Clanricarde surgery	9,839.35	NHS
Health	Rowan Tree surgery, branch of Clanricarde surgery	9,864.88	NHS
Health	Grosvenor & St James Medical centre	23,615.12	NHS
Health	Woodlands Medical centre	123,533.78	NHS
Health	New general practise for North Ridge and Wish Valley surgeries	6,168.36	NHS
Health	New general practise for North Ridge and Wish Valley surgeries	18,505.07	NHS
Highways & Transport	To improve public transport in the Hawkhurst area	20,561.19	KCC
Highways & Transport	Henwood Green Road Traffic Managent	2,825.16	KCC
Health	New general practise for North Ridge and Wish Valley surgeries	28,476.20	NHS
Health	Howell Surgery Refurbishment	49,868.70	NHS
Highways & Transport	Cycle Strategy Scheme	1,191.52	KCC

Highways & Transport	Pembury Road Corridor Improvements	18,255.53	KCC
Highways & Transport	Pembury Road Corridor Study	33,798.31	KCC
Highways & Transport	Juniper Close Cycle Route	605.48	KCC
Highways & Transport	Not allocated	47,270.00	KCC
Education	Mascalls Academy	228,098.60	KCC
Education	Tunbridge Wells Grammar School for Boys	22,922.67	KCC
Library	Matfield Mobile Library	2,661.80	KCC

S106 Contributions Received in 2022/23

Detailed in this section are the financial contributions received, including indexation, in the 2022/23 financial year.

A total of **£3,387,042.23** financial contributions were received by TWBC during the 2022/23 financial year; **£3,161,798.50** TWBC financial contributions and **£225,243.73** KCC and NHS financial contributions.

TWBC S.106 Contributions Received

Funding category	Funding details	Amount (£s)	Project allocation status at end of 2022/23
Open Space and Leisure	Childrens Playspace	15,044.28	Jubilee Playing Field in Sissinghurst
Open Space and Leisure	Youth and Adult Recreation	29,271.60	Hawkenbury Recreation Facilities
Open Space and Leisure	Childrens Playspace	10,559.42	Hawkenbury Recreation Ground Play facilities
Transport and Travel	Cycleways / Highways & Transport	14,519.16	Cycleway scheme/Kent Connect Bus/Cycle Parking
Other	Air Quality & Renewable Energy	2,639.93	Car club
Other	Public Art/Cultural Hub	12,919.57	Tunbridge Wells Cultural Learning Hub
Affordable Housing	Affordable Housing	559,809.05	Not allocated
Open Space and Leisure	Youth and Adult Recreation	306,554.06	Green Lane Playing Fields
Transport and Travel	Cycleways / Highways & Transport	131,229.51	285 Bus Service/Cycle Route
Open Space and Leisure	Youth and Adult Recreation	318,923.20	Colebrook Recreation Ground
Transport and Travel	Cycleways / Highways & Transport	4,467.43	Not allocated.
Transport and Travel	Cycleways / Highways & Transport	1,116.86	Sustainable Transport
Open Space and Leisure	Youth and Adult Recreation	139,236.10	Not allocated.
Open Space and Leisure	Childrens Playspace	12,453.34	Sustainable Transport
Open Space and Leisure	Youth and Adult Recreation	78,134.33	Not allocated.
Open Space and Leisure	Childrens Playspace	15,067.85	Horsmonden Village Hall
Open Space and Leisure	Youth and Adult Recreation	8,190.97	Horsmonden outdoor gym equipment
Transport and Travel	Cycleways / Highways & Transport	14,764.46	Brenchley Play Ground
Open Space and Leisure	Childrens Playspace	15,067.85	Woodlands Playground, Cunningham Road
Open Space and Leisure	Youth and Adult Recreation	8,190.97	Langton Green Recreation Ground
Transport and Travel	Cycleways / Highways & Transport	14,764.46	Cycle parking at Paddock Wood Station

Green Infrastructure	Green Infrastructure	12,180.98	Hop Pickers Heritage Trail
Community Services	Paddock Wood Community Centre	350,287.73	Paddock Wood Community Centre
Affordable Housing	Affordable Housing	716,201.89	Not Allocated
Open Space and Leisure	Youth and Adult Recreation	7,706.35	Woodbury Common
Transport and Travel	Cycleways / Highways & Transport	36,078.43	Cycle Strategy
Transport and Travel	Car Parking	3,006.54	Woodbury Park Frontage
Community Services	Paddock Wood Community Centre	361,435.46	Paddock Wood Community Centre

KCC and NHS S.106 contributions Received.

Funding category	Funding details	Amount (£s)
Health	Howell Surgery, Brenchley	51,443.46
Health	Clanricarde Medical Centre, Kingswood Surgery & Lonsdale Medical Centre	23,879.00
Adult Education	The Amelia Scott Resources	7,220.09
Education	Bennett Memorial Diocesan School.	30,792.74
Community Services (Youth)	Tunbridge Wells (Youth)	1,081.67
Waste	Tunbridge Wells Transfer Station	3,033.13
Education	St Barnabus Primary School	43,815.92
Community Services (Library)	Tunbridge Wells Library	832.48
Community Services (Cultural Hub)	Tunbridge Wells Cultural Hub	40,485.53
Community Services (Cultural Hub)	Tunbridge Wells Cultural Hub	1,394.00
Education	Tunbridge Wells Grammar School for Boys	13,772.03
Community Services (Cultural Hub)	Tunbridge Wells Cultural Hub	558.24
Education	Tunbridge Wells Grammar School for Boys	5,515.08
Community Services (Youth)	Tunbridge Wells (Youth)	219.21
Waste	Tunbridge Wells Transfer Station	795.00
Community Services (Youth)	Tunbridge Wells (Youth)	87.79

S106 Contributions spent, transferred or delivered

Detailed in this section are the financial contributions spent or transferred for spending, including indexation, during the 2022/23 financial year.

The total of all financial contributions spent/transferred during the 2022/23 year was **£1,279,618.15**.

Funding category	Funding details	Amount (£S)	Destination
Community Facilities	Paddock Wood Community Centre	361,435.46	Paddock Wood Town Council
Community Facilities	Paddock Wood Town Council Community Hub	350,287.73	Paddock Wood Town Council
Green Infrastructure	Landscape and Ecology	9,851.27	Commons Conservators
Open Space and Leisure	Facilities Lower Green Recreation Ground, Pembury	10,716.98	Pembury Parish Council
Open Space and Leisure	Refurbishment of Pennington Grounds Play Area	8,113.47	Southborough Town Council
Open Space and Leisure	Maintenance of Brenchley Recreation Ground	1,542.00	Brenchley Parish Council
Open Space and Leisure	Children's Playspace Contribution Ball Field Cranbrook	14,958.13	Cranbrook Sissinghurst Parish Council
Open Space and Leisure	Development of Sports Ground at Maidstone Road	5,689.00	Horsmonden Sports club
Green Infrastructure	Hop Pickers Line Heritage Trail	12,180.98	Paddock Wood Town Council
Green Infrastructure	Strikes Woodland Contribution	3,000.00	Paddock Wood Town Council
Green Infrastructure	Foal Hurst Wood Improvements	22,294.87	Paddock Wood Town Council
Open Space and Leisure	Langton Green Recreation Ground	8,190.97	Speldhurst Parish Council
Secondary Education	Mascalls Academy	228,098.60	KCC
Library	Matfield mobile library	2,661.80	KCC
Highways	Pembury road corridor study	33,798.31	KCC
Highways	Pembury road corridor improvements	18,255.53	KCC

Education	Tunbridge Wells Grammar School for Boys	22,922.67	KCC
Community Facilities	Southborough Hub Sports Pavillion	13,661.00	KCC
Primary Education	St Barnabus Primary School	43,815.92	KCC
Library	Bookstock	832.48	KCC
Cycle Route	Juniper Close cycle route	605.48	KCC
Highways	Henwood Green road traffic management	2,825.16	KCC
Highways	Cycle strategy scheme	1,191.52	KCC
Highways	To improve public transport in Hawkhurst	20,561.19	KCC
Secondary Education	Bennett Memorial Diocesan School Expansion	30,792.74	KCC
Adult Education	Resources at The Amelia Scott, Tunbridge Wells	7,220.09	KCC
Youth	Kent Youth Services at Calverley Park Tunbridge Wells	1,081.67	KCC
Waste	Household Waste Recycling Centre Tunbridge Wells	3,033.13	KCC
Transport and Travel	285 Bus Service	40,000.00	KCC

S.106 Assisted funding for Capital & Revenue Programmes transferred for spending

Spending Transfers to Capital

Detailed in this section is **£708,031.64** of S.106 contributions including indexation, that financed the Capital programme during the 2022/23

Funding category	Funding details	Amount (£S)	Destination
Community Facilities	JISKOOT, GD STAT RD 04/00048	44,449.00	Hilbert Football Pitch Drainage
Affordable Housing	12/02547 Former Kent & Sussex Hospital	613,056.00	Hop Pocket Inn, Paddock Wood Homewood Road, Langton Green
Affordable Housing	13/02502 EX CRANBROOK CL OFF	50,526.64	Affordable Housing Grant

Spending Transfers to Revenue

Detailed in this section is **£54,133.53** of S.106 contributions transferred to Revenue for spending, including indexation, during the 2022/23 financial year.

FUNDING CATEGORY	FUNDING DETAILS	AMOUNT (£S)	DESTINATION
Other	06/01969 FORMER GOODS YARD	12,000.00	Revenue Spend - Public Art - Grosvenor Park/Hilbert Rec
Other	07/02595 PEMBURY HOSPITAL	14,153.24	Revenue Spend - Air Quality Monitoring
Transport and Travel	12/02547 Kent&Sussex Hospital	10,117.50	Revenue Spend - Car Parking Zone C Expansion
Open Space and Leisure	DAIRY CREST TW 15/507556	10,486.32	Revenue Spend - St. John's Rec. Fountain Refurbishment
Green Infrastructure	18/01976 Land at Gibbett and Furnace	7,376.47	Revenue Spend - Kent High Weald Partnership

Non-financial contributions delivered

Detailed in this section are the non-financial contributions delivered in the 2022/23 financial year.

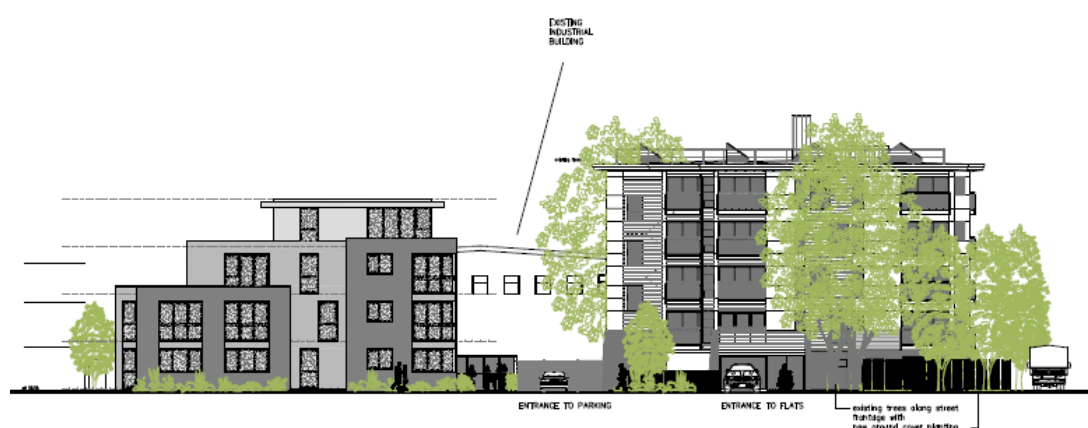
Category	Amount (Units)
Affordable housing	153

Affordable Housing

Hop Pocket Inn Affordable Housing Development

Release of Section 106 funding for affordable housing totalling £613,056 held by the Council in lieu of affordable housing provision at the Former Kent & Sussex Hospital site (Planning permission 12/02547)

Hop Pocket Inn site in Paddock Wood - x10, 1 and 2 bed flats



Homewood Road, Langton Green – x 4 flats at



S106 Projects

Below are some examples of projects in the community that TWBC section 106 money has been spent on in 2022/23. Many other contributions also helped to fund KCC projects that are not detailed here (see money transferred to KCC in the previous section).

Paddock Wood Community Centre at Memorial Field



S.106 contributions through a planning obligation agreement for Mascalls Farm planning ref: 17/03480/FULL and 19/0253/FULL helped deliver a brand new Community Centre built in 2023 in Paddock Wood, Kent.

The modern space has a very large 243mtr.sq hall, which can be divided into 2 or 3 smaller halls. The whole hall can seat 299. The facility offers contemporary meeting rooms, hall hire, fully fitted kitchen and all with full disabled access and wifi throughout.

Outside there are 64 car parking spaces, including electric charging points, a coach parking bay and 4 disabled parking bays.

Memorial field recreation ground offers; sports pitch, cricket pitch, tennis courts and children's play park.



Southborough Hub Football Pavilion, Ridgeway Playing Fields

Sports Pavilion with views east over the Ridgeway Playing Fields



The Southborough Hub Sports pavilion was delivered together with KCC and Southborough Parish Council releasing S.106 contributions through a planning obligation agreement for land adjacent to Hornbeam Avenue, Southborough ref: 20/01807/FULL.



The new sporting facilities will benefit local residents by increasing opportunities to be more physically active. This will encourage community activities and social interaction for a range of ages which will promote health and wellbeing.

St. John's Recreation Ground Fountain



Developer contributions totalling £10,486.32 were released from revenue to fund the refurbishment of the ornamental fountain in St John's Recreation Ground utilising a contribution received through planning obligation for Dairy Crest planning reference 15/507556.

Hop Pickers Line Heritage Trail



Follow the Hop Pickers Line Heritage Trail

Starting in Paddock Wood, the Hop Pickers Line Heritage Trail passes through the beautiful Kent villages of Horsmonden, Goudhurst and Cranbrook before ending in Hawkhurst.

To view a printable pdf map of the old line [click here](#)

Click on the icons below for further details

A map of the Hop Pickers Line Heritage Trail. The map shows a green line connecting five locations: Paddock Wood, Horsmonden, Goudhurst, Cranbrook, and Hawkhurst. Each location has an information panel with text and images. To the right of the map is a vertical list of five green buttons, each labeled with a location name: Paddock Wood, Horsmonden, Goudhurst, Cranbrook, and Hawkhurst.

The Hop Pickers Line Heritage Group are a well established community group with a proven track record of delivering projects associated with the Hop Pickers Line. They have worked hard with the Borough and Town Councils to release developer contributions to the amount of £12,180.98 received through Planning obligation 14/504140. A new website has been launched www.hoppickersline.org as well as two information panels along the “Black Path” in Paddock wood.

Foal Hurst Wood Nature Reserve and Strikes Woodland



Developer contributions totalling £3,000 received through planning obligation 14/506766, Mascalls Court Farm have been allocated and released as a 'Woodland Contribution' to be applied towards measures to mitigate increased recreational pressure on Strikes Woodland.

Developer contributions totalling £22,294.87 received through planning obligation 17/03480/FULL Mascalls Farm have been allocated and released as a 'Fol Hurst Wood' contribution to be applied towards the cost of the mitigation measures for making improvements to Fol Hurst Wood. Mitigation proposed for Fol Hurst Wood includes replacement of pedestrian sleeper bridges, improvements to the ditch next to the car park and the car park.

Cranbrook Ball Field Play Equipment



Developer contributions totalling £14,958.13 received through planning obligation 19/02136/FULL, Dulwich Preparatory School Cranbrook be allocated and released to Cranbrook and Sissinghurst Parish Council towards the replacement of Children's Play equipment in The Ball Field, Cranbrook

The allocation of funds has contributed towards the purchase and installation of new play equipment and associated wetpour safety surfacing.

285 Bus Services

Release of S106 contributions from Hawkenbury Farm residential development (planning application 16/07023) were released to Kent County Council as a contribution to support the 285 bus service.

TWBC was informed in March 2022 that the combined impact of the Covid pandemic, increases to costs and driver shortages meant that a number of bus operators were intending to reduce or cancel services across the county. One of the services that was at risk was the Monday to Friday 285 Service that operates between Hawkenbury and Royal Tunbridge Wells Town Centre. The service was de-registered by operator Nu-Venture as of April 2022, which was a cause of significant concern to local residents and Councillors.

