

Fig. 4 Christopher Saxton, *Atlas of England and Wales, Kent* (1575)



Fig. 5 A Plan and Description of one capital messuage or mansion house called ... Milkhouse in the parish of Cranbrook being parcel of ye possessions and inheritance of Thomas Plummer ... 1622. CKS ref. U1506p1-45.



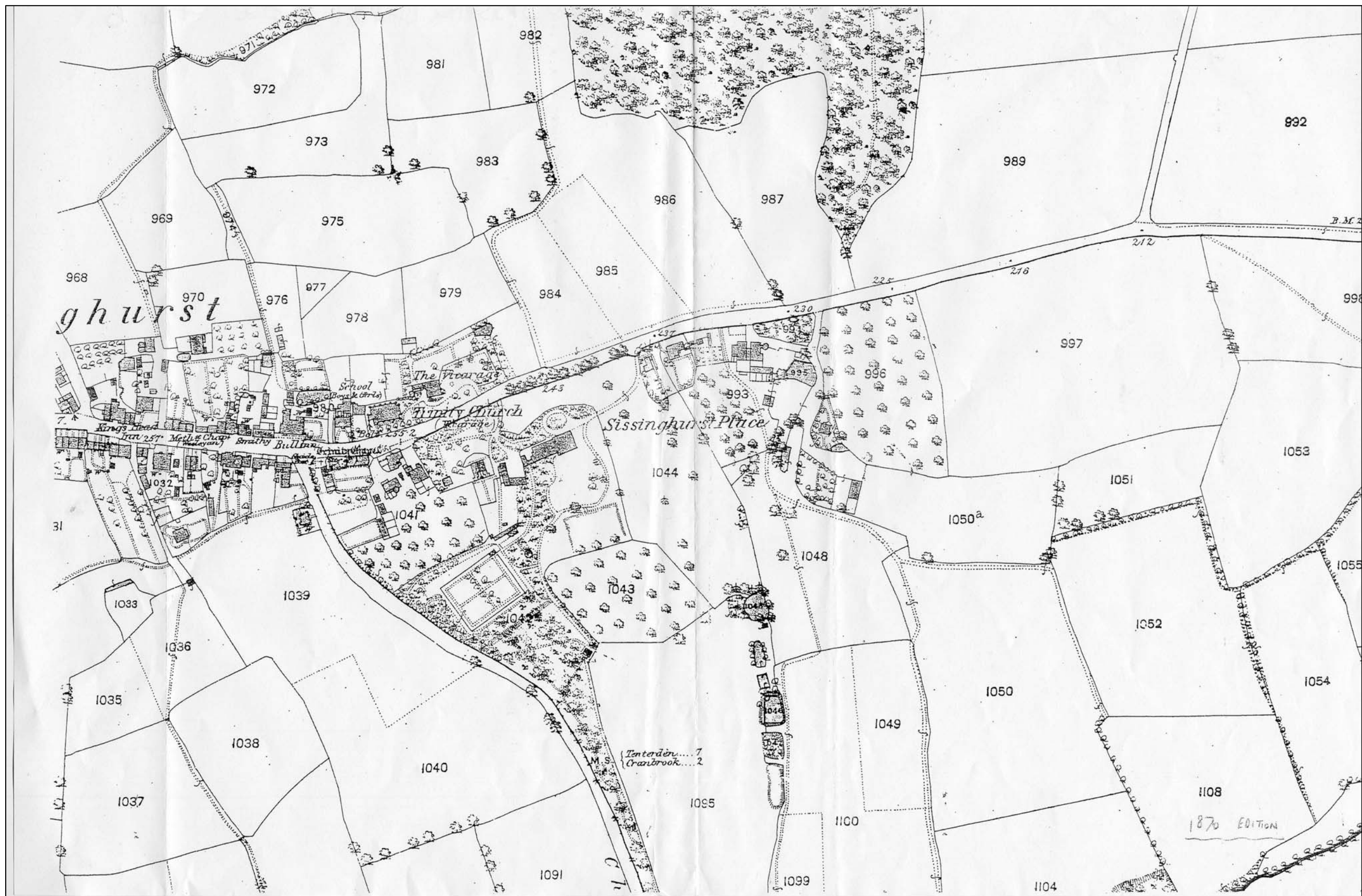


Fig. 7 Ordnance Survey 2nd edn 25" map (1898). Sheet 70/4



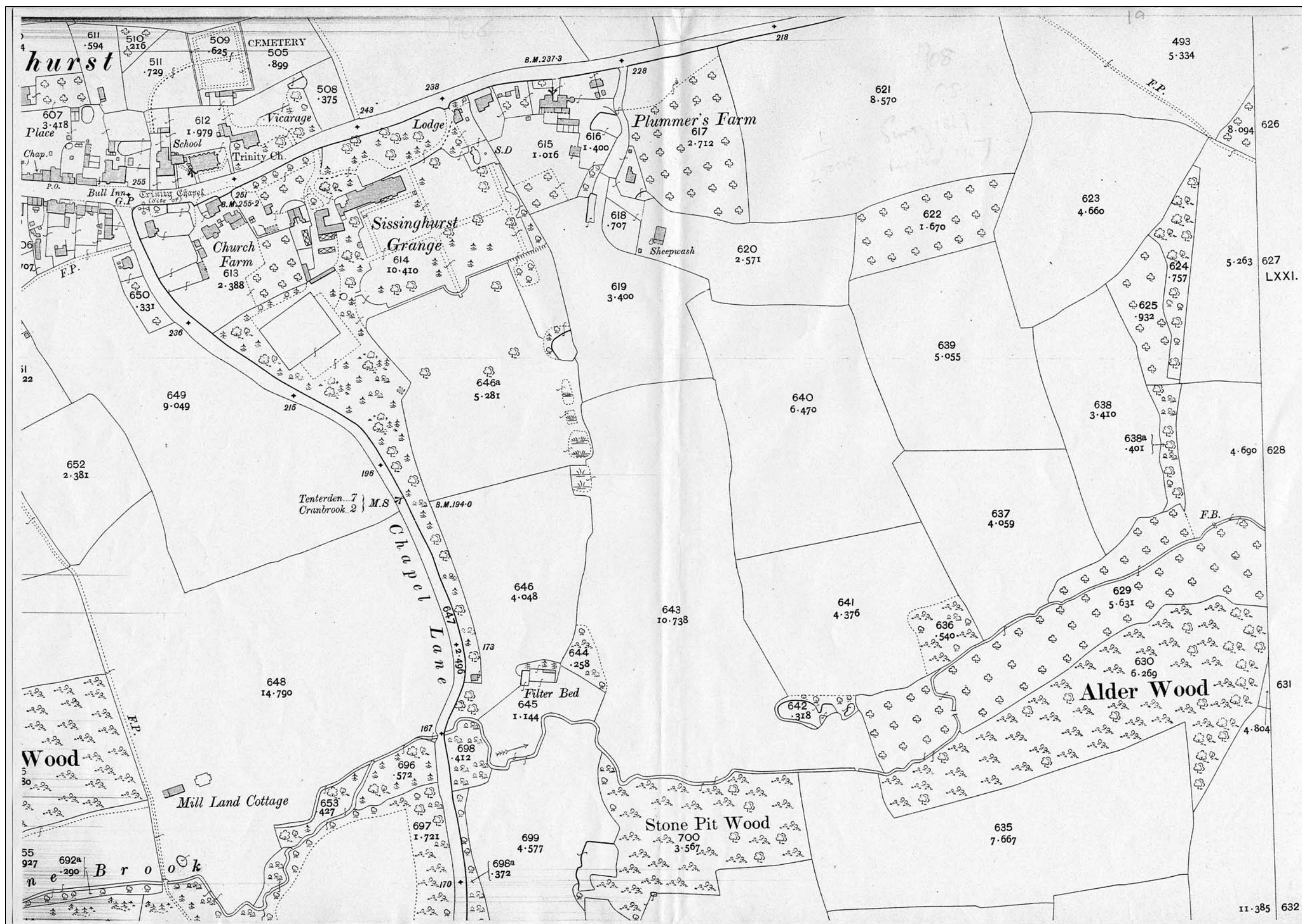


Fig. 9 Ordnance Survey Revd edn 25" map (1938). Sheet 70/4.

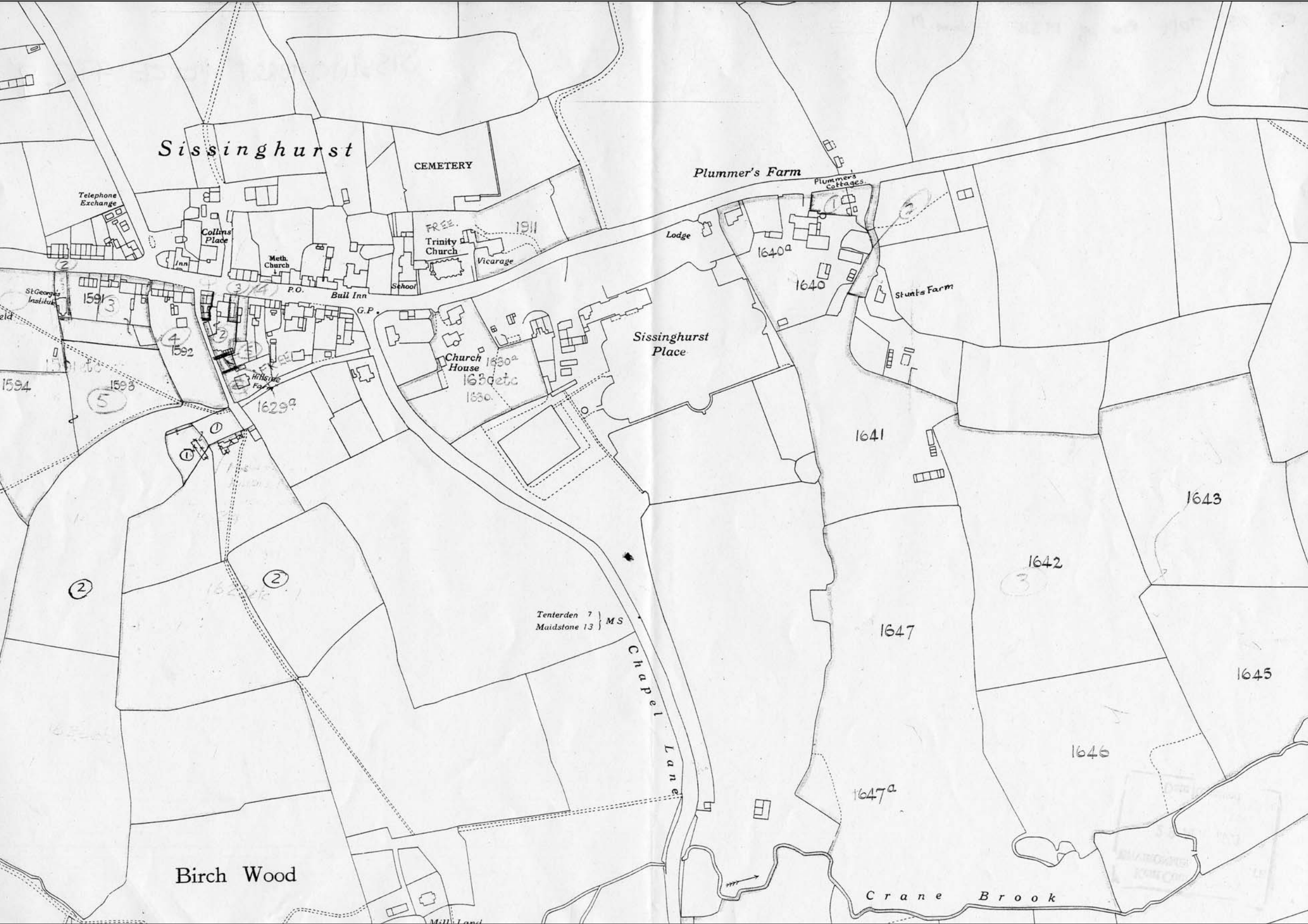


Fig. 10 Estate map 1925 (Private collection)

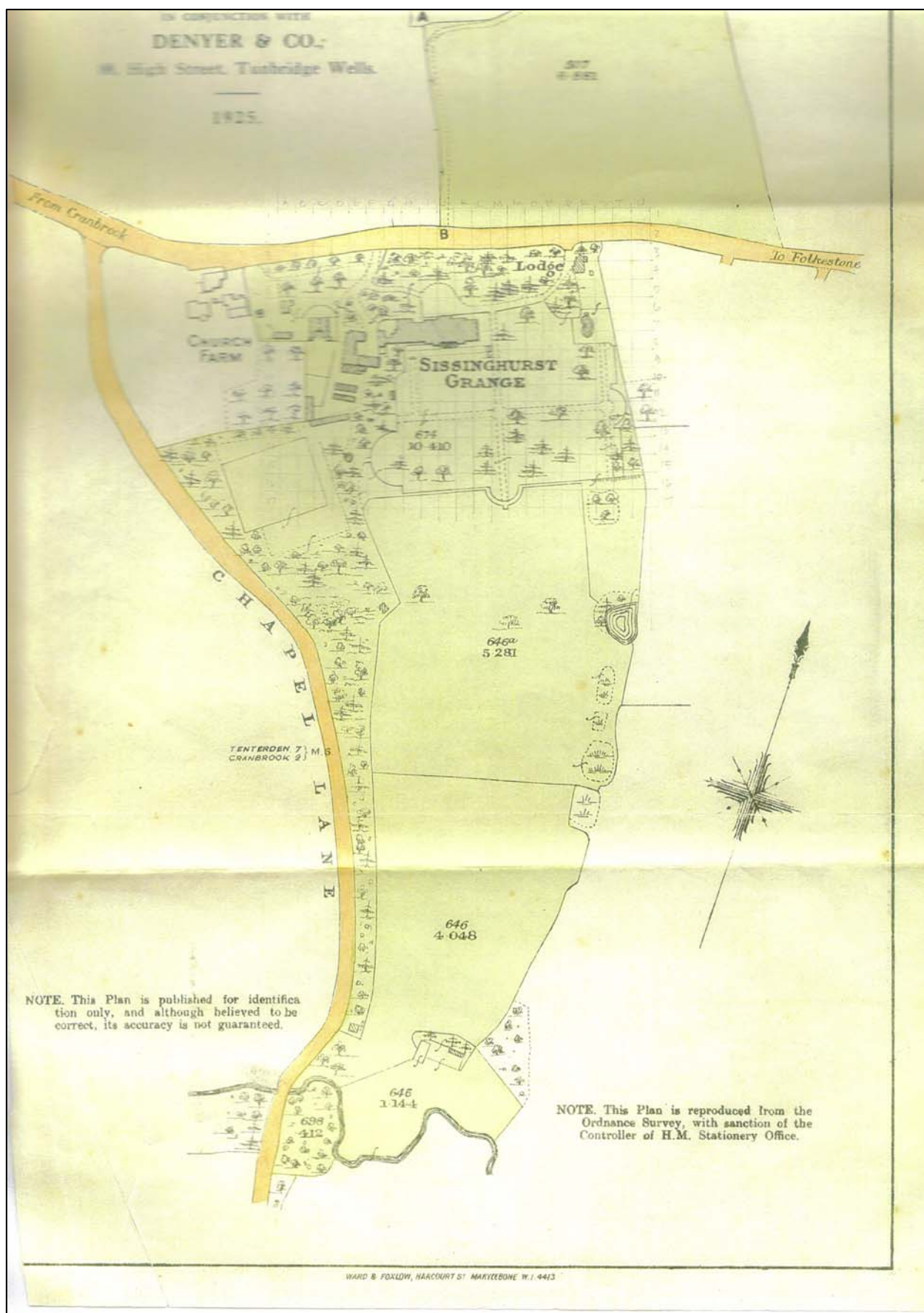


Fig. 11 Milkhouse Place by Paul Sandby. Late C18 (private collection)



Fig. 12 Aerial photograph 1938

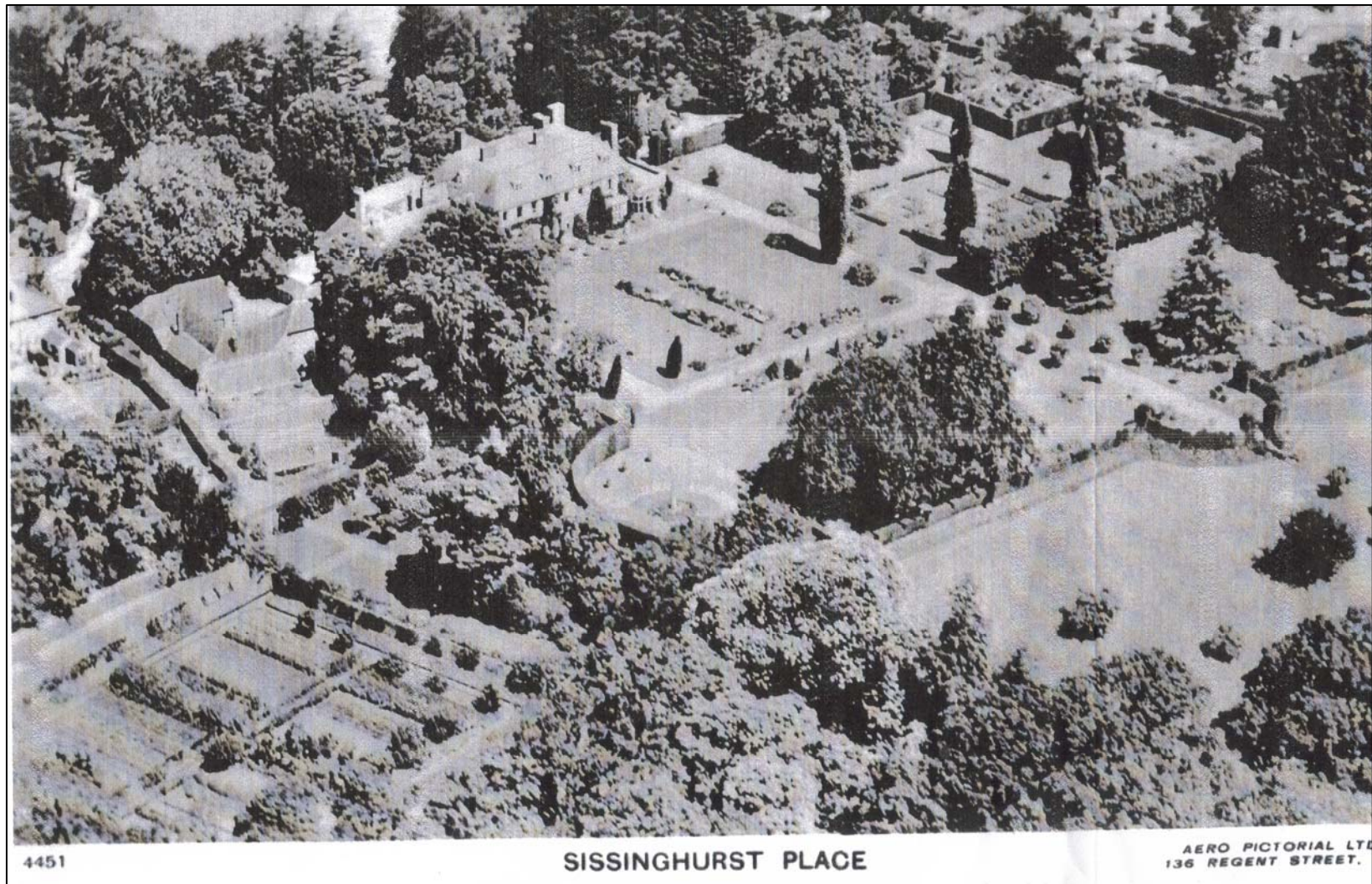


Fig. 13 Photograph of Sissinghurst Place house on fire 1948

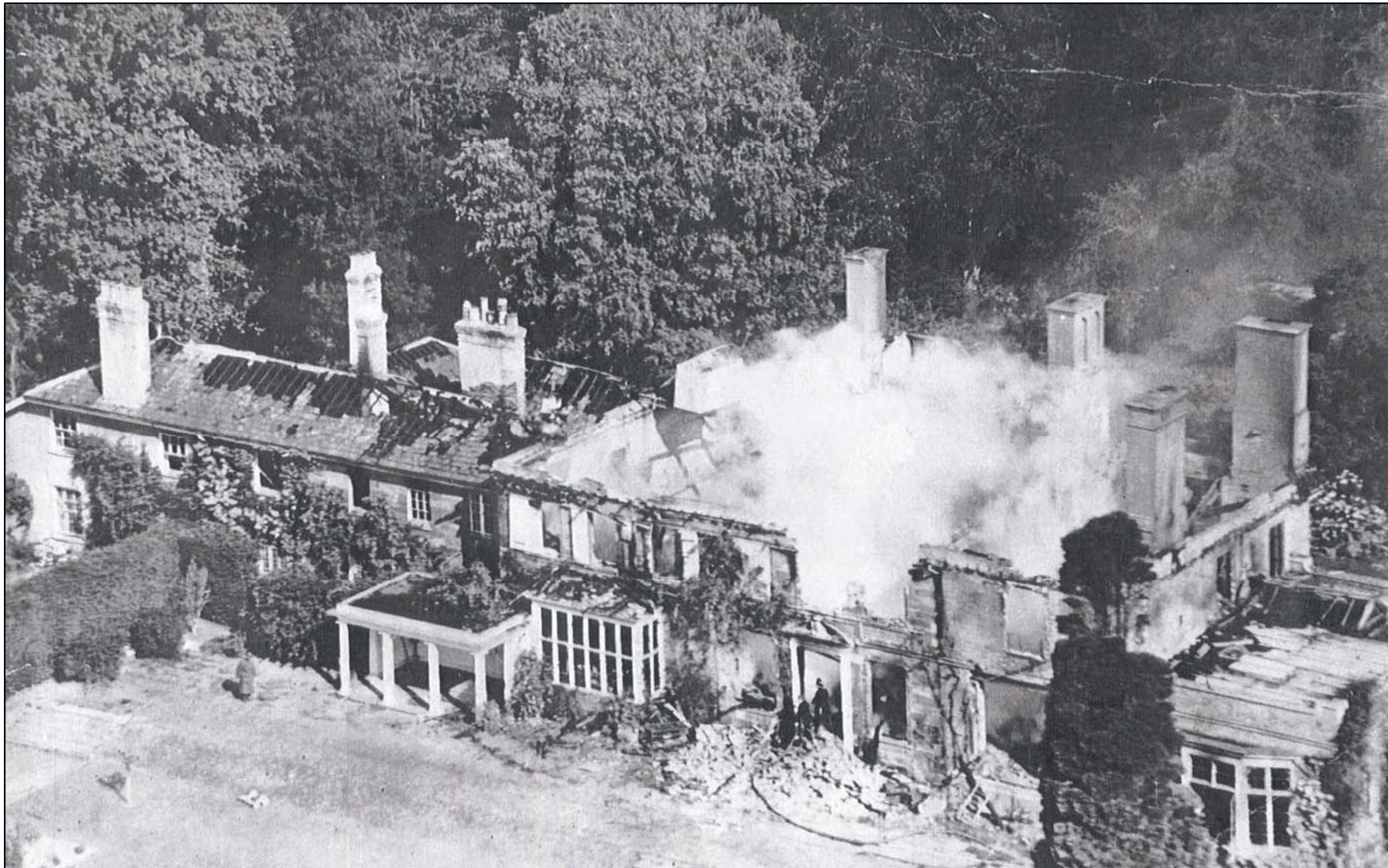


Fig. 14 Sales particulars 1925 (private collection).

PARTICULARS of

“Sissinghurst Grange”

Situate in the Parish of Sissinghurst, close to the Village, about $2\frac{1}{2}$ miles from Cranbrook Station, $3\frac{1}{2}$ miles from Staplehurst main line, 40 miles of London and 15 miles from the Coast.



THE RESIDENCE

which is approached by a short sweeping Drive from the main road, is well screened by trees, and has a stone-built Lodge at Entrance.

THE HOUSE is built of brick and stone, partly dressed with stucco and creeper clad. The principal front faces almost due south, the Entrance being on the north. From the south front, charming views are obtained across the Grounds and Parkland dipping to the Stream, embracing the Hemsted Woods in the distance.

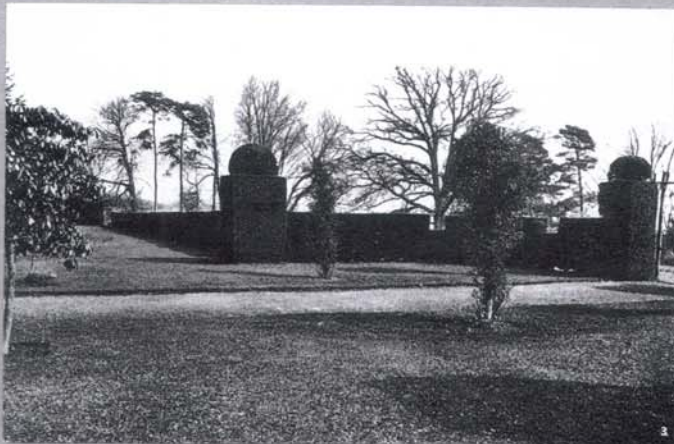


The Gardens & Pleasure Grounds

are most delightfully situated and well secluded; they are well laid out and easy to maintain and include Small Rock Garden and Lily Pond, Two Tennis Lawns, Small Garden with dovecote, Rose Garden, Herbaceous Borders protected by

VERY FINE CLIPPED YEWE HEDGES

surrounded by well-grown Timber Trees in numerous varieties.



The Kitchen Garden

entered through an old iron gate, consists of old-established walled Garden, containing a Pergola Walk of Pear Trees with a fine selection of other fruit trees and small fruit, with brick paths and dwarf box hedges. Some of the bricks here bear the date of 1781.

There is a further area of Kitchen Garden in Enclo. No. 645.

CHARMING THATCHED SUMMERHOUSE.

The small amount of useful GLASS includes a VINERY with full-bearing Vines and Peach House, CONSERVATORY with separate boiler, Potting Shed, Potato Store, Fruit Room and Wood Store and Large Store Shed.

There is a SPINNEY containing Valuable Timber, including a line of fine Beech, bordering the Galford Road on the western side of the Estate. There is a Well here, with horse-gear-driven pump, not now in use.

The Land is light, and consists of 9½ Acres under Grass, to the South of the House, with a Paddock on the opposite side of main road, in good condition, having Valuable Building Frontage.

On the East side of the Enclosure No. 646a is a series of old Fish Ponds, of which only one now contains water.

SCHEDULE.

Ord. No.	Description.	Area.
PARISH OF CRANBROOK.		
507	Paddock	6.881
614	House, Buildings, Gardens and Wood, Lodge and Two Cottages	10.410
646a	Park and Fish Ponds	5.281
646	Pasture	4.048
645	Pasture and Filter Bed	1.144
698	Spinney412
Total A.		28.176

Fig. 15 Sales advertisement in *The Times* (11 July 1892)

Kent.—The charming Freehold Residential Property, known as Sissinghurst-place, within an easy drive of Staplehurst Station on the main line S.-E. R., and only two miles from Cranbrook, comprises a gentleman's residence, in perfect repair, seated on an eminence, commanding delightful views, and surrounded by grandly-timbered grounds and park lands of about 21 acres. The house is approached by a long carriage drive, with lodge entrance, and contains entrance-hall, large dining and drawing room, a grand billiard room, library and smoking room, housekeeper's room, servants' hall, and complete domestic offices, 14 bed and dressing rooms, besides two men-servants' rooms. The water supply is ample and sanitary arrangements excellent. Capital stabling for six horses, coach-houses, and groom's room, two cottages for coachman and gardener. The grounds are of great beauty, being clothed with finely-grown specimen coniferæ and forest timber, and are most tastefully displayed in wide spreading lawns, tennis court, rose garden, &c.; a special feature is the ornamental woodland, intersected by miles of walks, walled kitchen garden, with two-division vinery, peach and nectarine house, green and hot houses, &c. With possession.

Kent Compendium of Historic Parks & Gardens – 2009 review of Tunbridge Wells Borough

Fig. 16 Photographs of Sissinghurst Place December 2008



Above left: The terrace

Above right: The Lime Walk



Left: Parkland