

Fig. 7 Christopher Saxton, *Sussex, Surrey and Kent* 1575



Fig.8 Charles Greenwood, *Map of the County of Kent* 1821



Fig. 9 Estate map 1748.

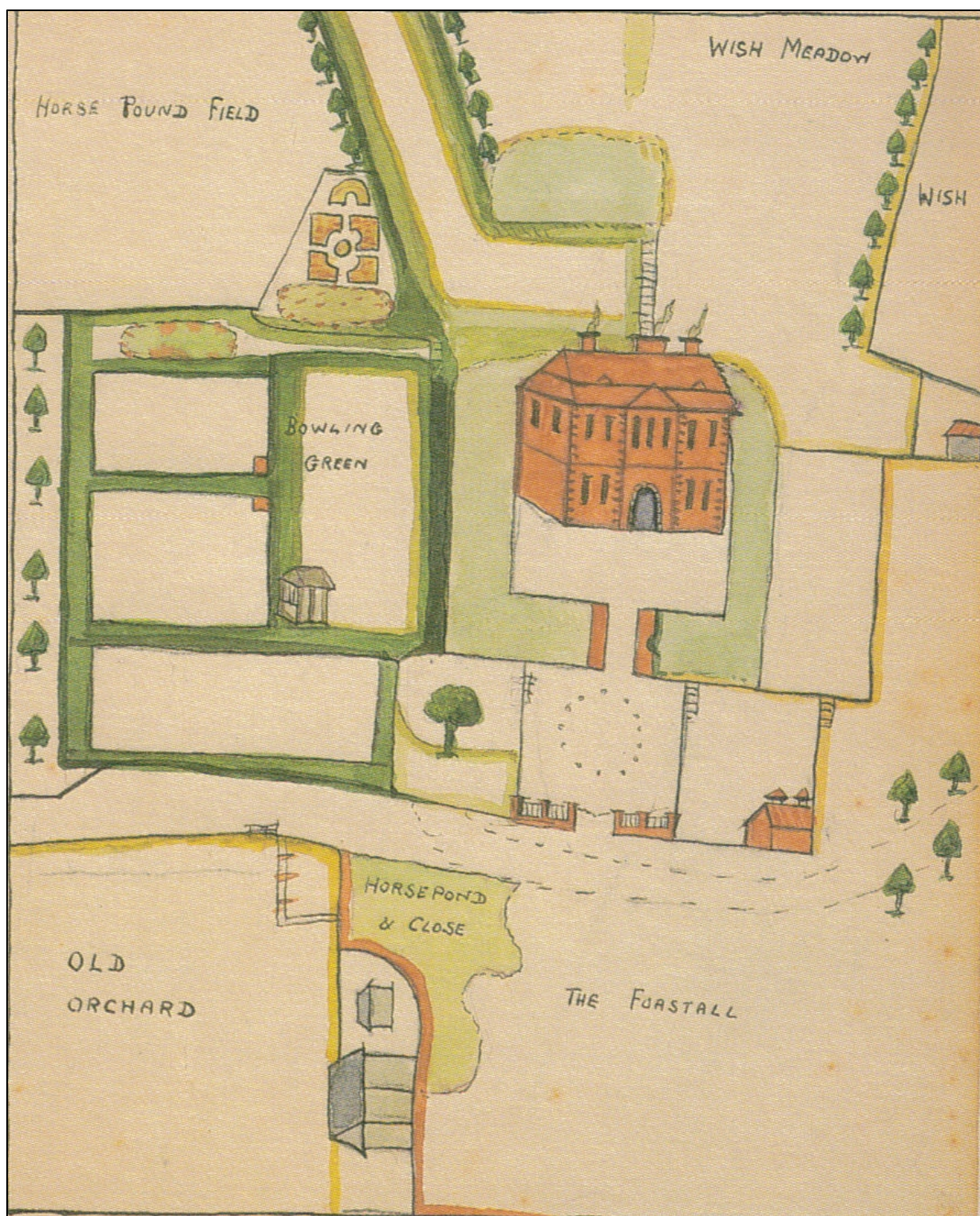
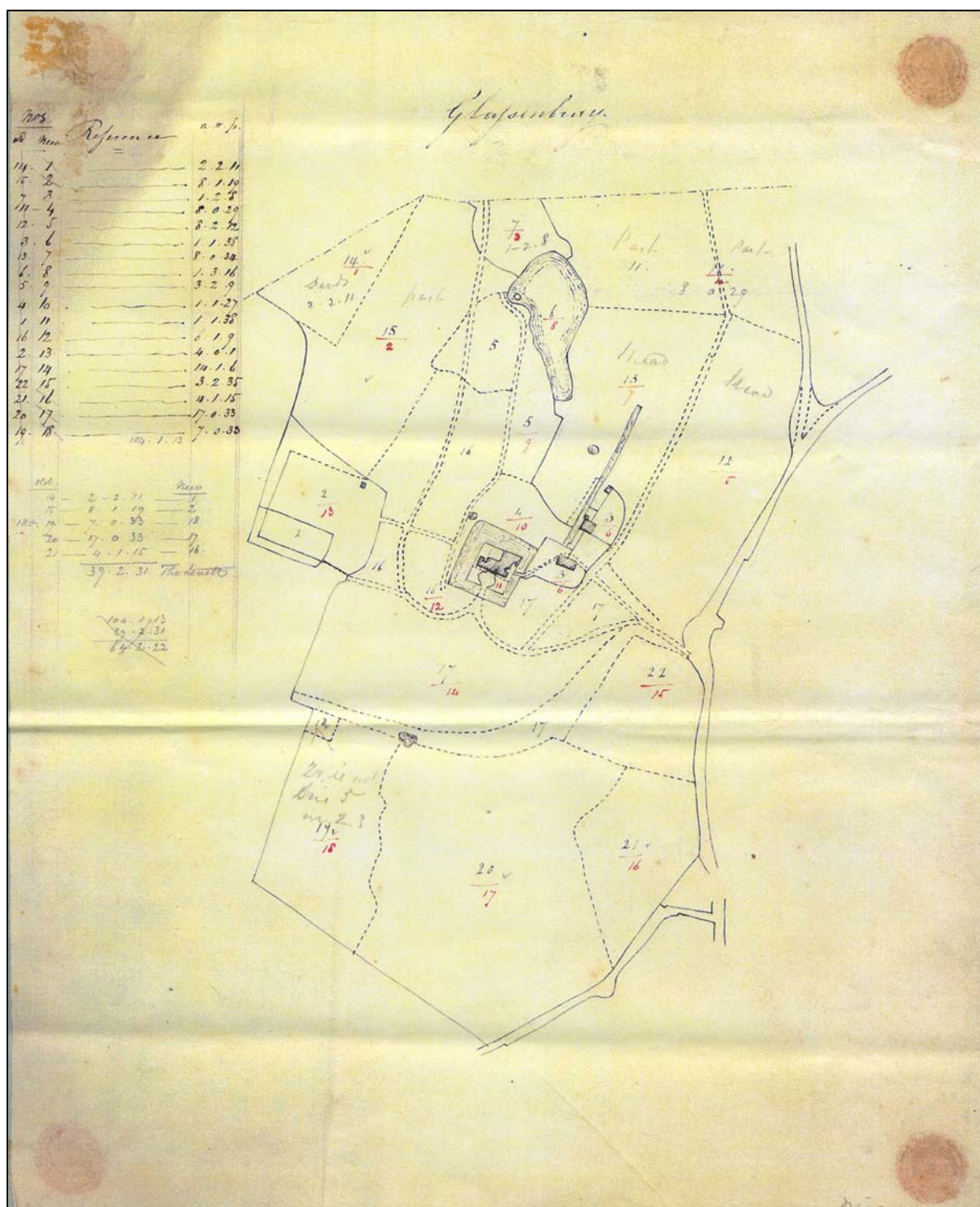


Fig. 10 Plan of Glassenbury and the home farm 1810. Olsen, p. 91





**Fig. 12 1st edn 25" OS map 1870 Sheet 70/2.**

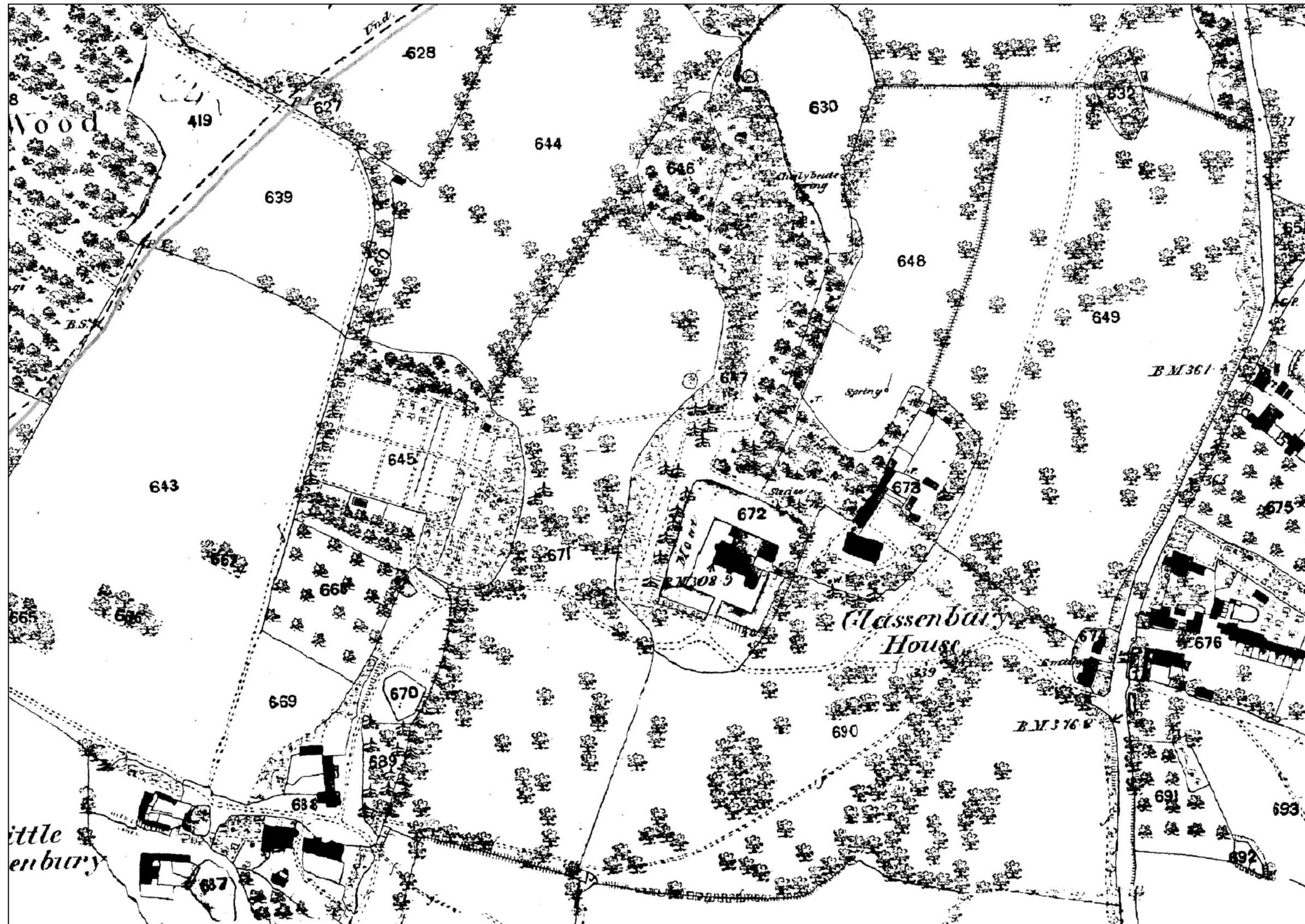


Fig. 13 2nd edn 6” OS map 1897

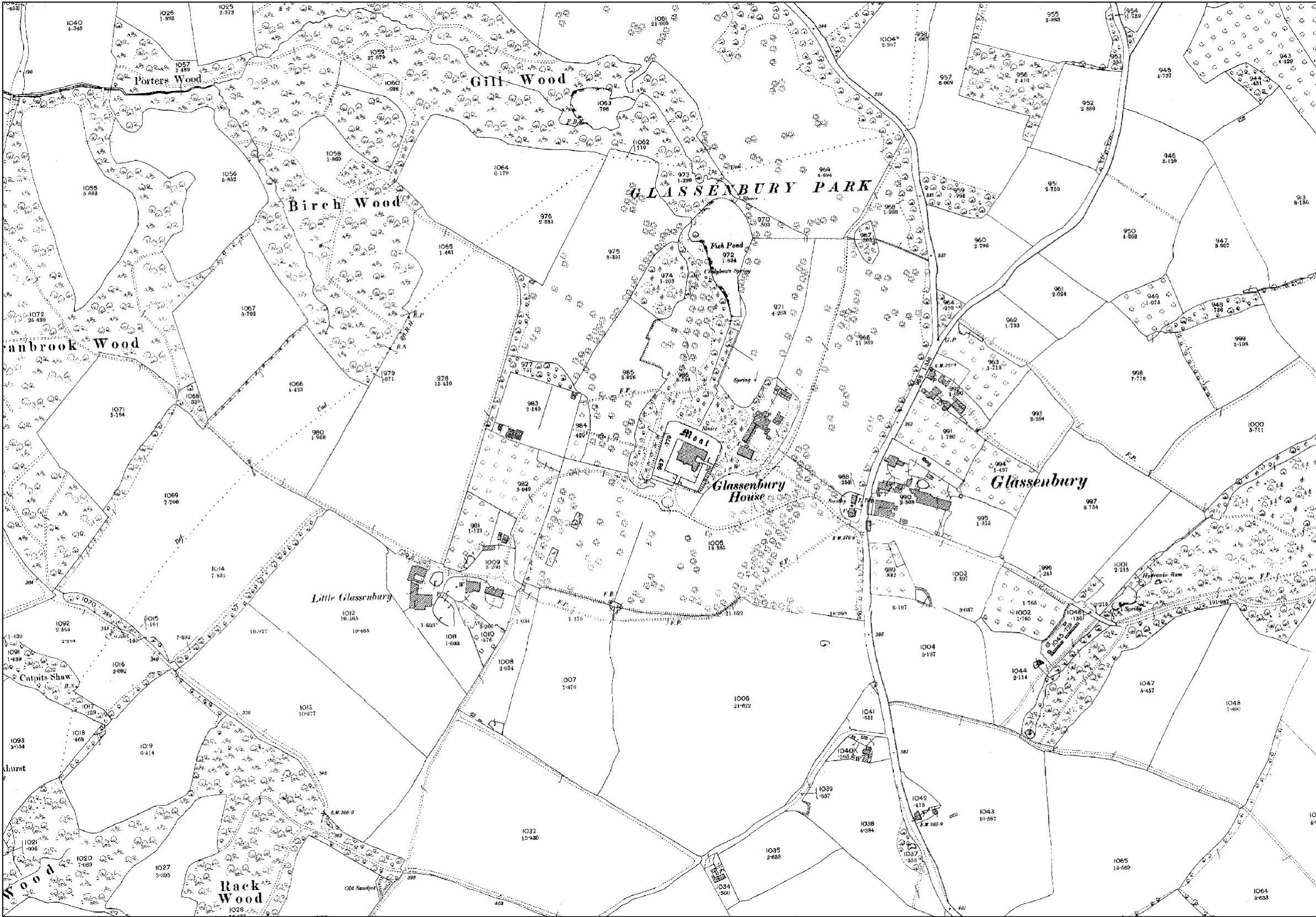


Fig. 14 3rd edn 25" OS map 1908 Sheet 70/2

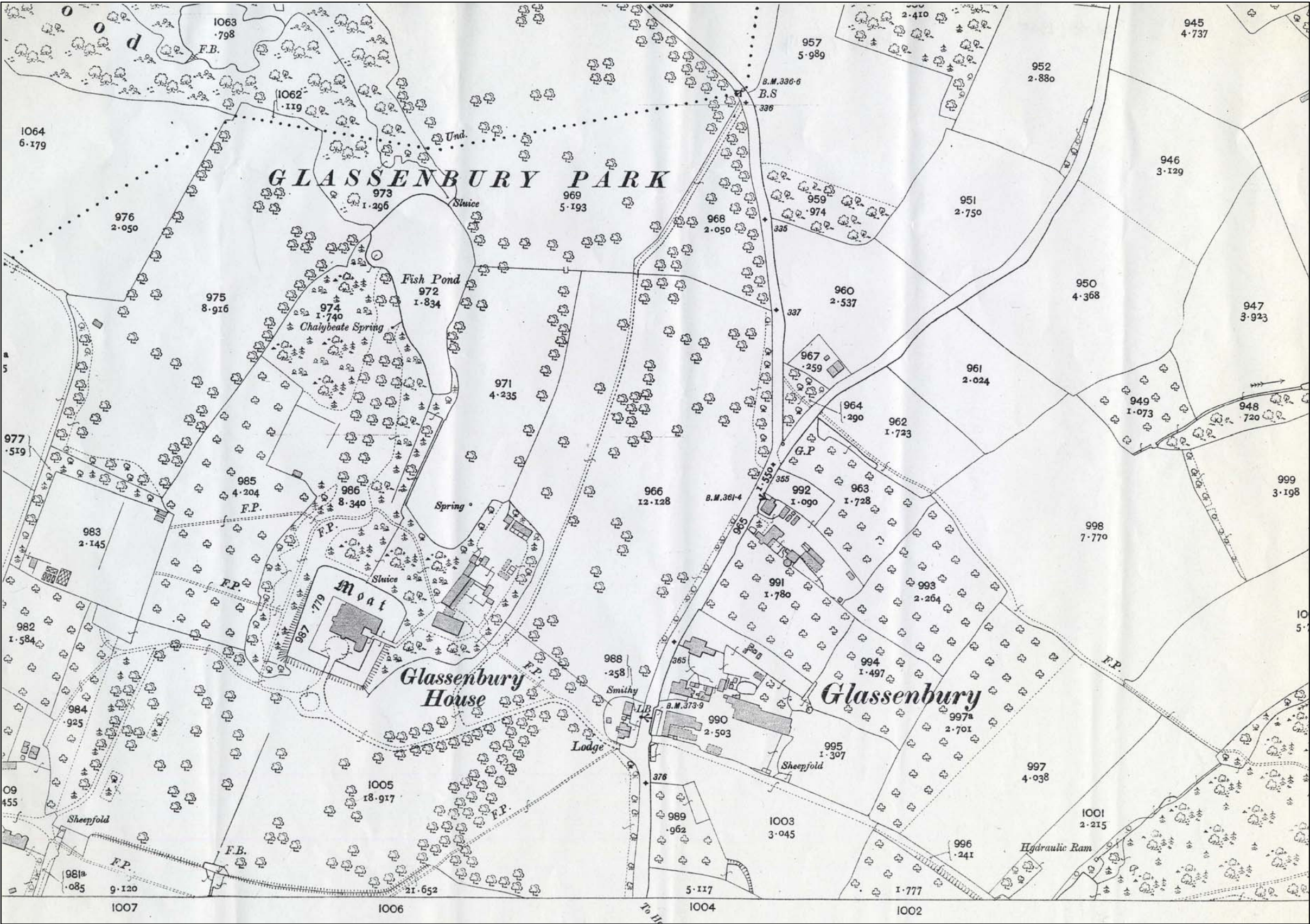


Fig. 15 Revd edn 25" OS map 1938 Sheet 70/2.

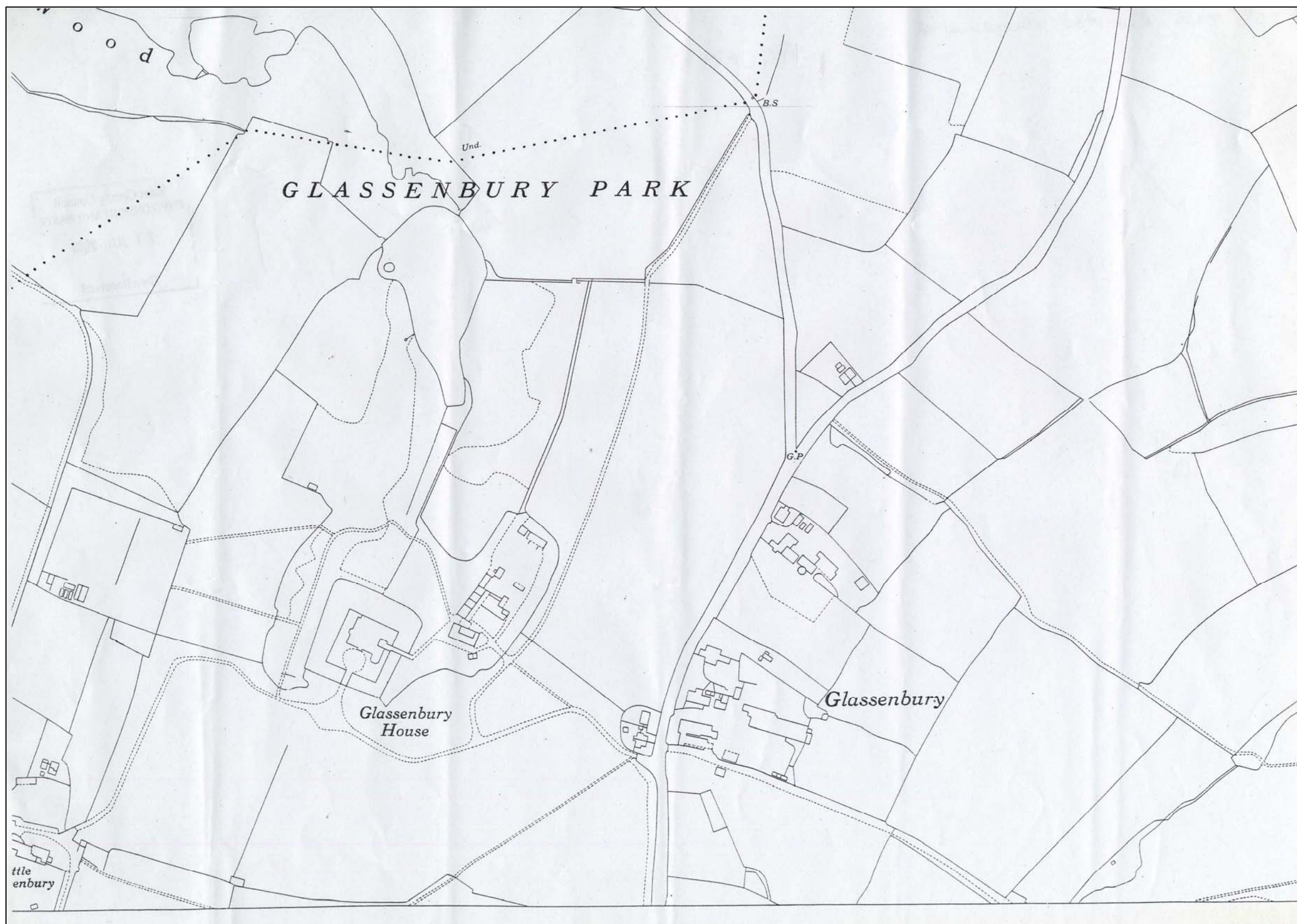


Fig. 16 Photograph of Glassenbury in the 1880s. Olsen, p. 104.



Fig. 17 Glassenbury 1905. *Cranbrook Rural District Official Guide* (1960).

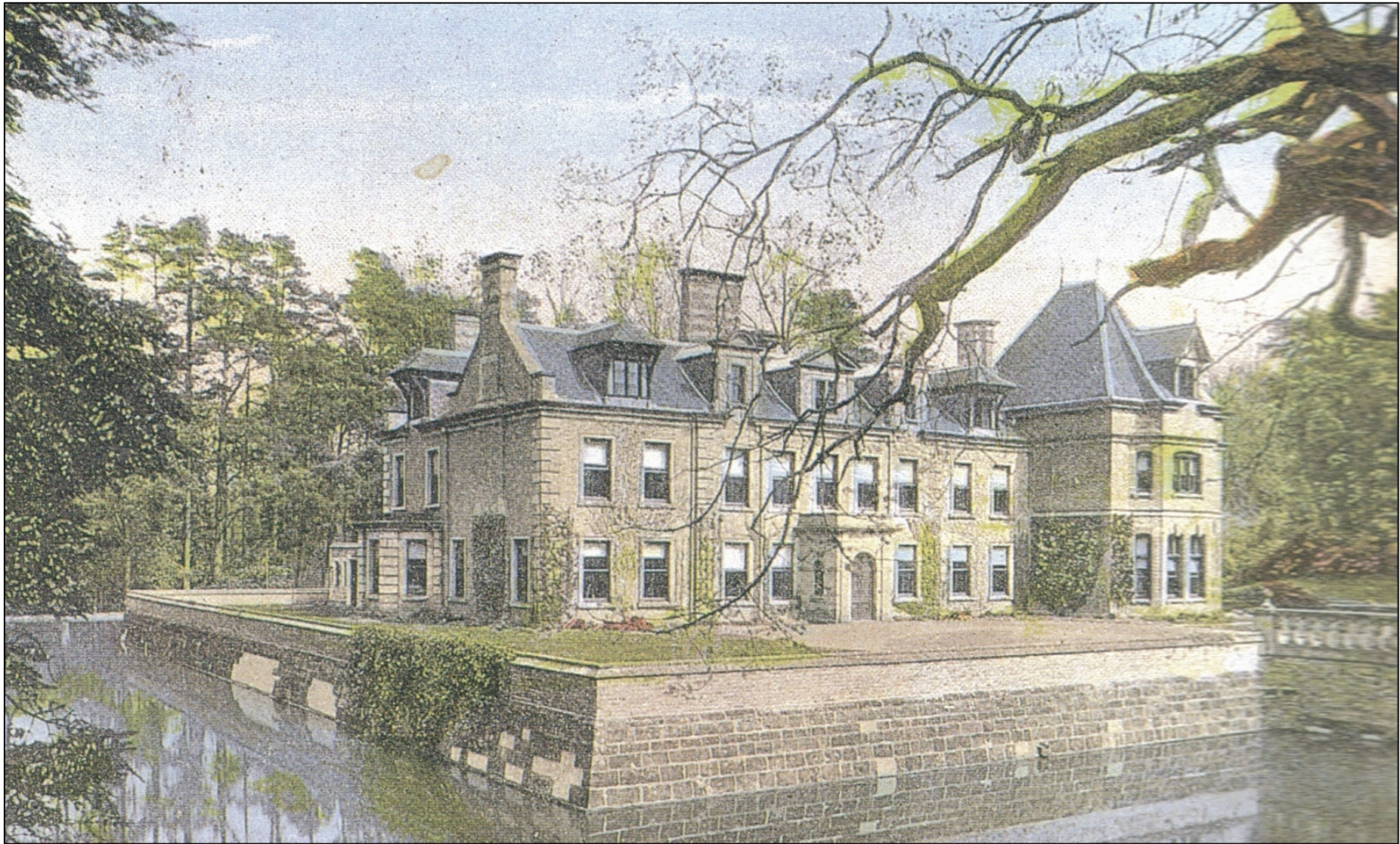


Fig. 18 Aerial view 1951. Reproduced in Olsen, p. 126.

