

Fig. 7 Philip Symonson, *Map of Kent* (1596)

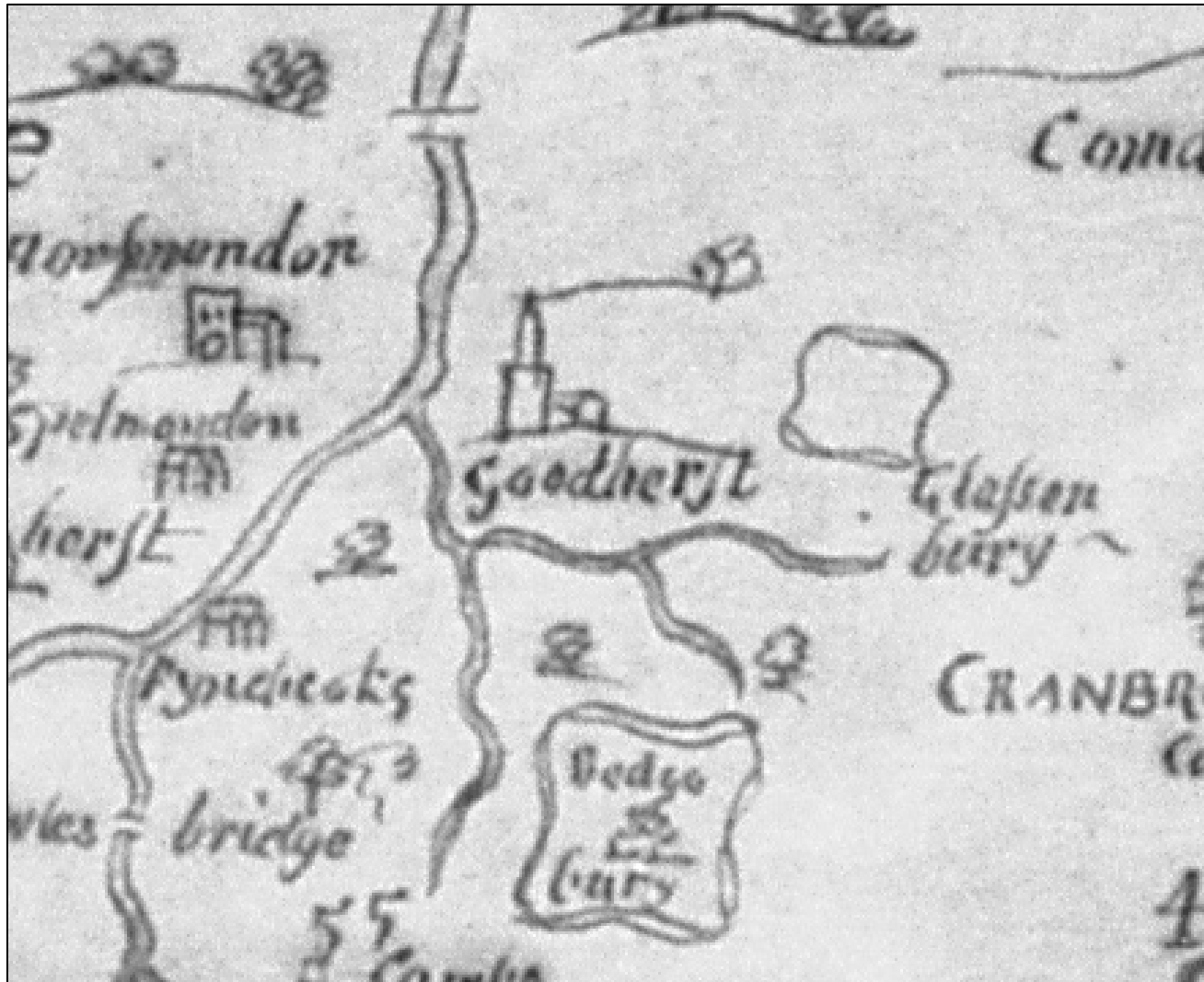


Fig. 8 William Mudge, *An Entirely New and Accurate Survey of the County of Kent* (1801)

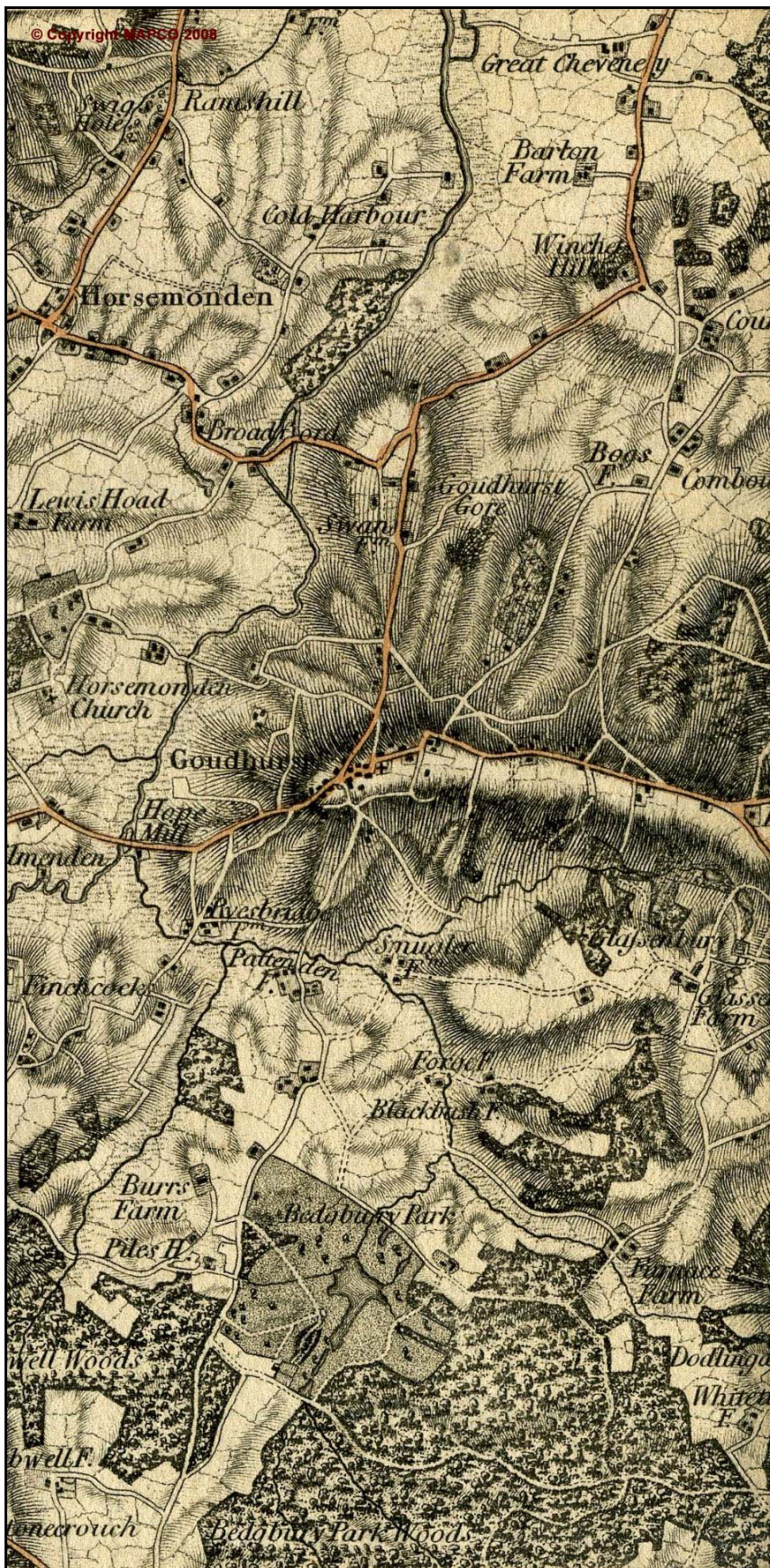


Fig. 9 Ordnance Survey 1st edn 25” map (1870)

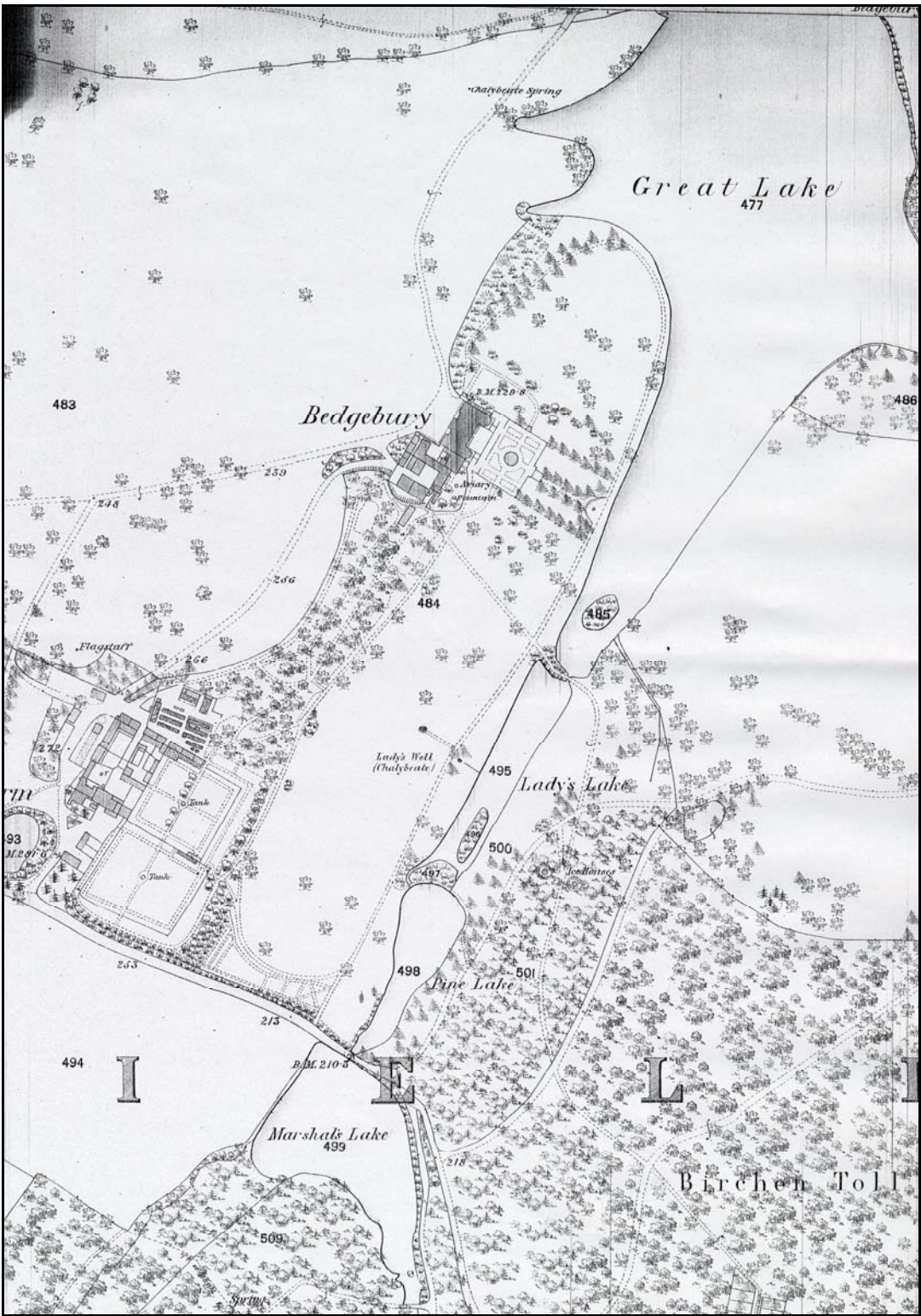


Fig. 10 Ordnance Survey 3rd edn 25" map (1907)

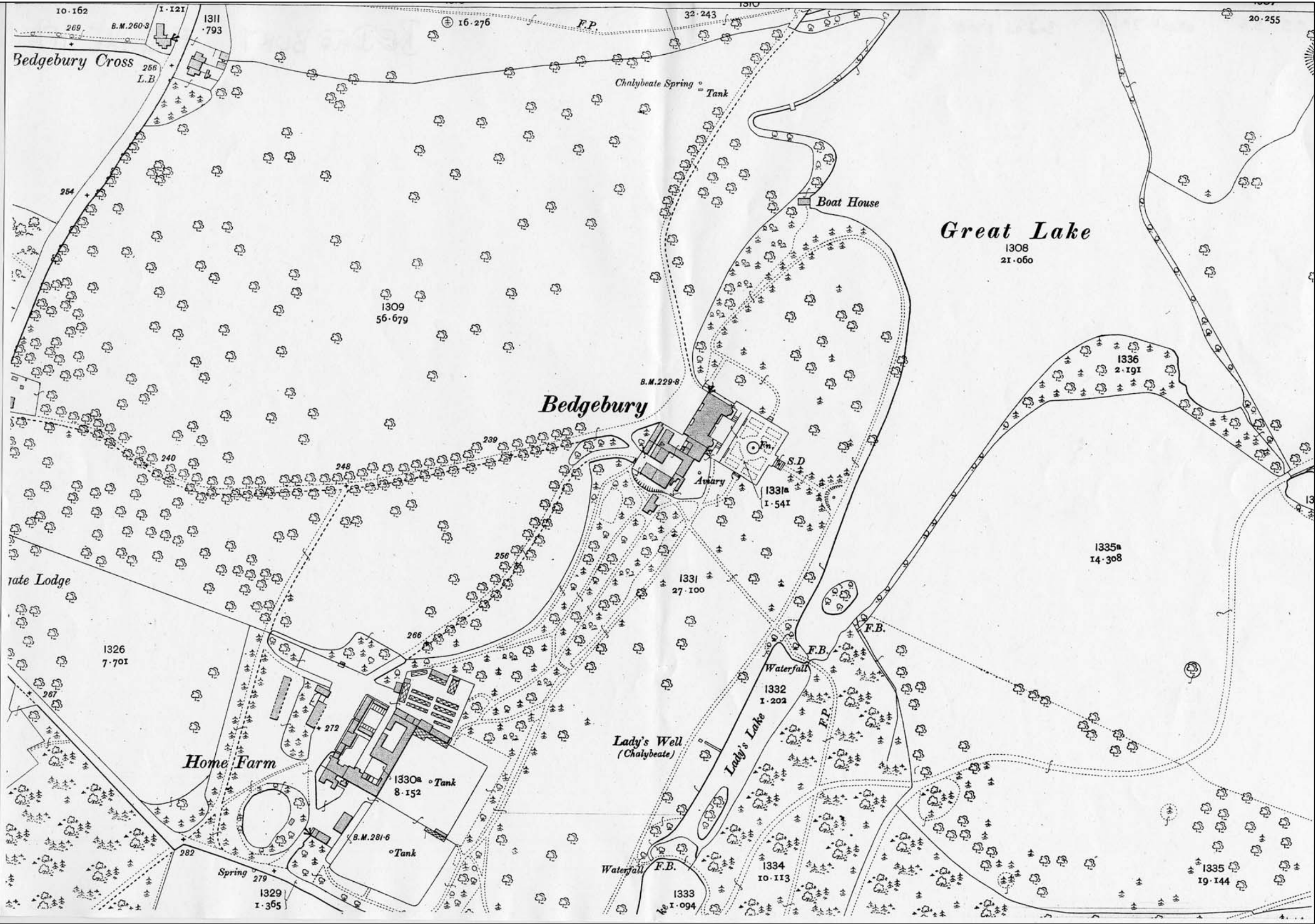


Fig. 11 Ordnance Survey Revised edn 25" map (1938)

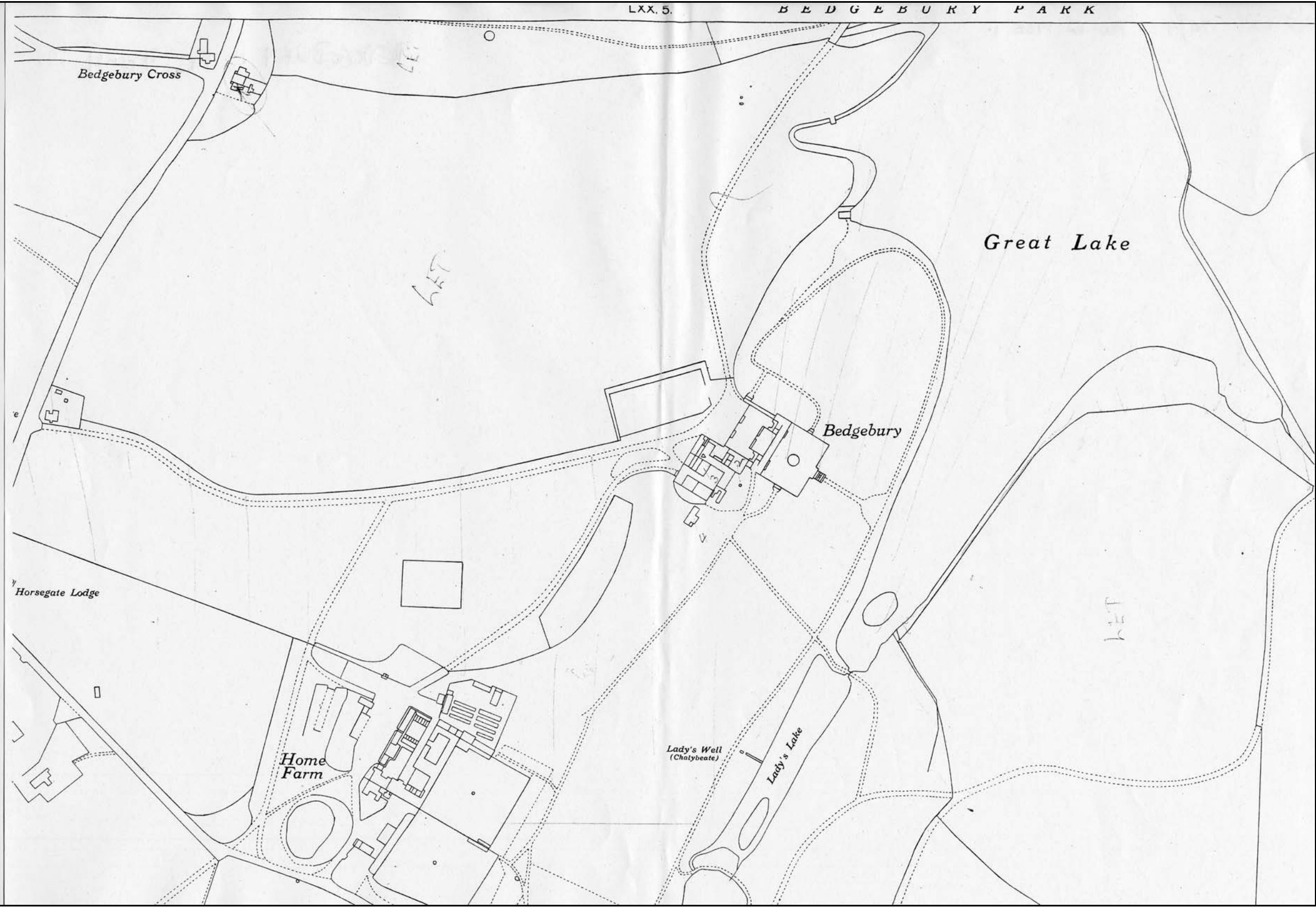


Fig. 12 *Bedbury. The seat of Francis Law c.1830*. Painting of Bedgebury House from across the water. Reproduced in Batchelor p. 15.



Fig. 13 Watercolour (1) by Alexander Roos c.1938. Reproduced in Batchelor p. 13.



Fig. 14. Watercolour (2) by Alexander Roos c.1938. Reproduced in Batchelor p. 13.

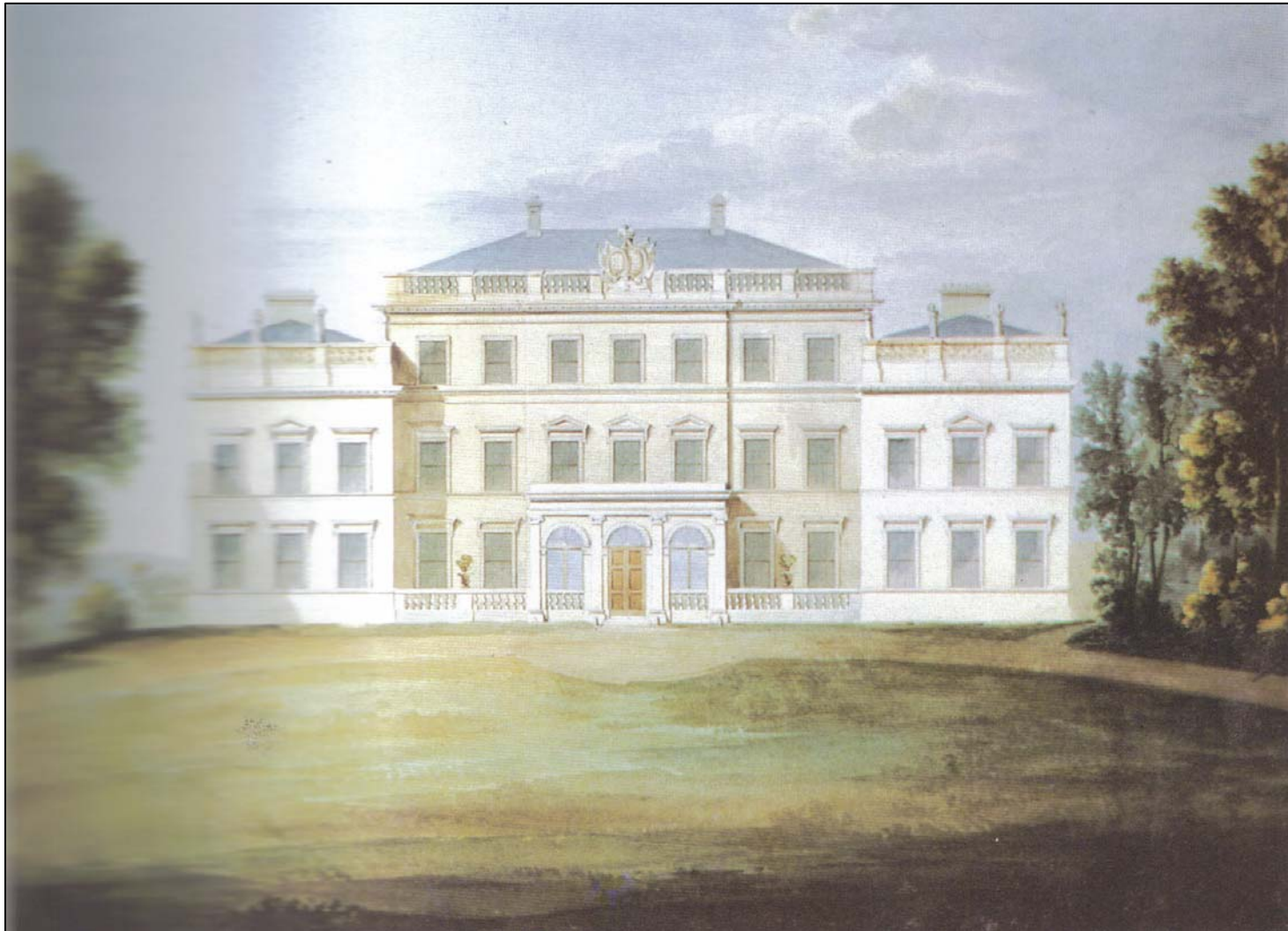


Fig. 15. Watercolour (3) by Alexander Roos c.1938. Reproduced in Batchelor p. 16.



Fig. 16 Watercolour (4) by Alexander Roos c.1938. Reproduced in Batchelor p. 16.



Fig. 17 Watercolour attributed to Alexander Roos c.1938. Reproduced in Batchelor p. 15.

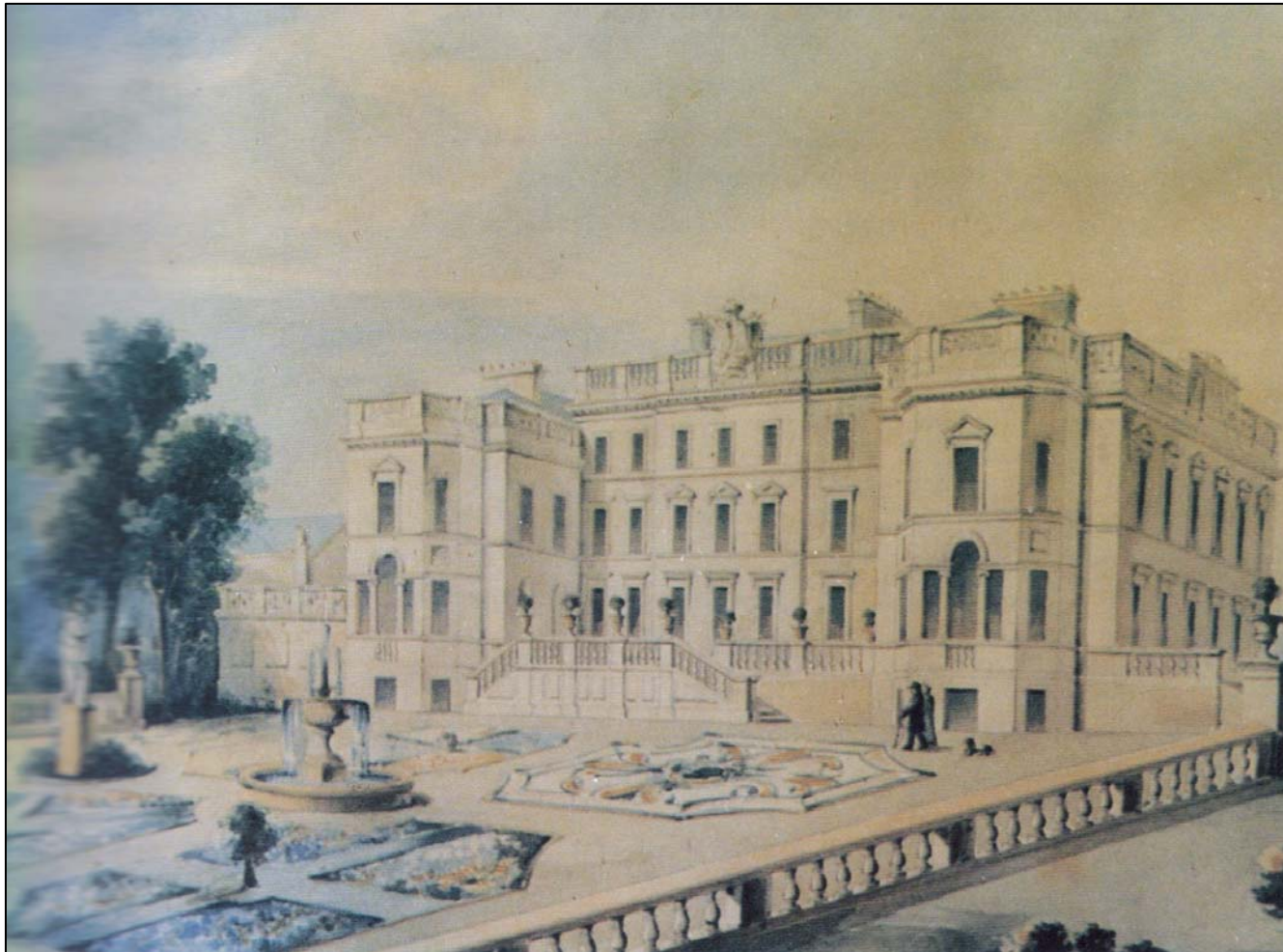


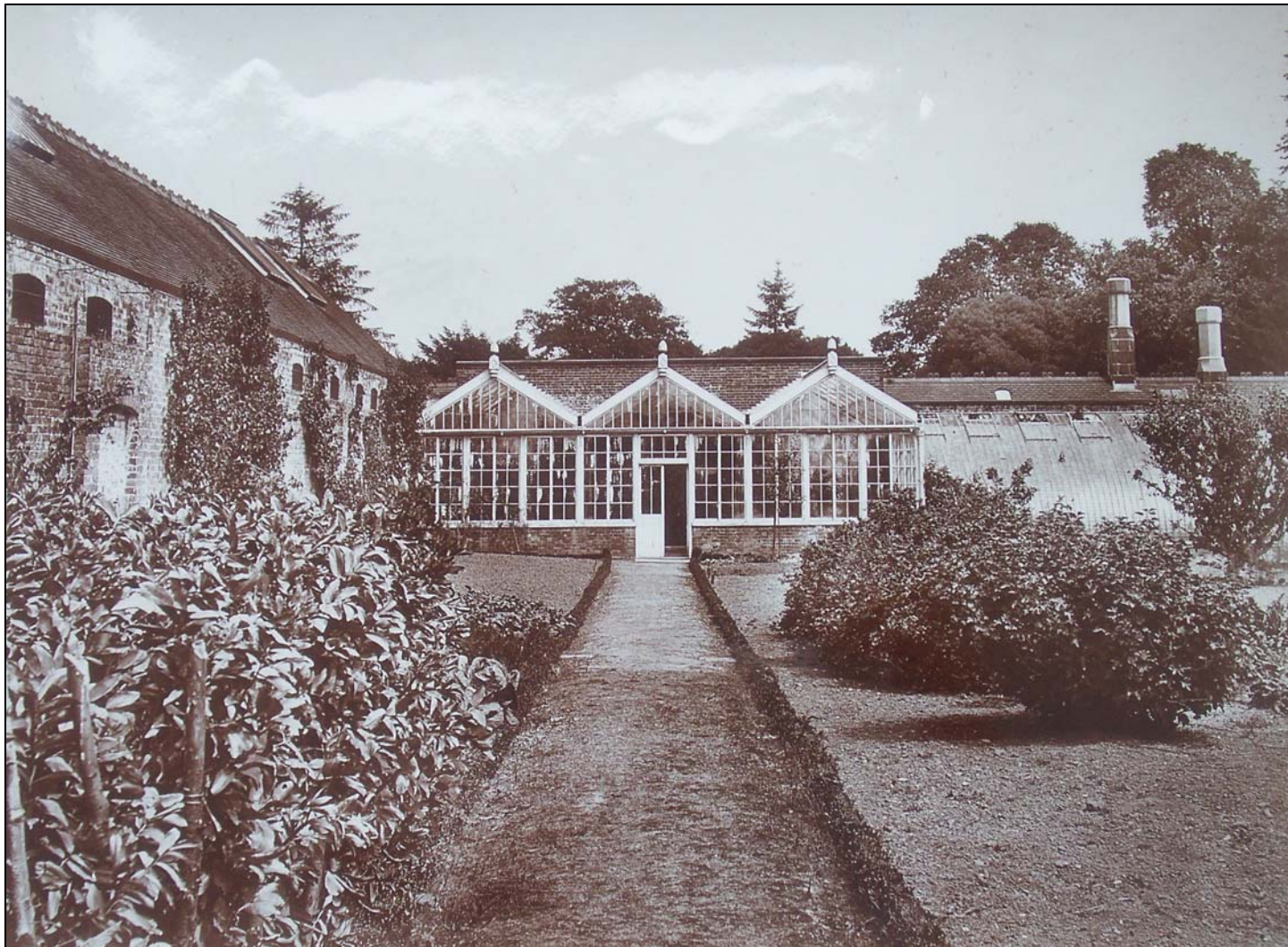
Fig. 18 Undated postcard (private collection)



Fig. 19 Undated watercolour (private collection)



Fig. 20 Photograph of the kitchen garden 1920s?



Kent Compendium of Historic Parks & Gardens – 2009 review of Tunbridge Wells Borough

Fig. 21 Edward Hasted, 'The Hundred of West or Little Barnefield. The Parish of Goudhurst (part),
The History and Topographical Survey of the County of Kent: Volume 7 (London, 1798), pp. 73-88.

THE HUNDRED OF WEST OR LITTLE BARNEFIELD

LIES adjoining to that of Marden southward, and is in the lath of Aylesford; it consists only of the remaining part of the parish of Goudhurst yet undescribed, being the southern part of it.

ALMOST in the midst of this part of Goudhurst is situated that eminent seat, called BEDGEBURY, nearly surrounded by a large tract of woodland, the greatest part of which is now known by the names of *Bedgebury-park* and *the Fryth-woods*.

This seat, in times of high antiquity, afforded both seat and surname to the possessors of it, one of them, John de Bedgebury, as appears by an old dateless deed, probably about the time of king Edward II. demised lands to William de Comeden, of Comedenhouse in these parts; his seal fixed to it being a knight on horseback, armed *cap-a-peé*. His descendant John de Bedgebury, son of John de Bedgebury, who died in 1424, and was buried in this church, dying *s. p.* in the reign of Henry VI. Agnes his sister, married to John Colepeper, became his heir, and entitled her husband to this seat, with the appendant *manors of Bedgebury and Ford*. He was the second son of Walter Colepeper, of Goudhurst, descended from those of Bayhali, in this county, where a full account of them may be seen. He was afterwards knighted, and sheriff in the 7th year of king Edward IV. at which time he resided at Bedgebury, where he died in 1480, and was buried near his father in this church, leaving two sons, Alexander, who was of Bedgebury, and Walter, who was ancestor of the Colepepers, of Leeds castle, Hollingborne, and the Charter-house. (*fn. 1*)

Sir Alexander Colepeper, the son, was of Bedgebury, and sheriff in the 15th and 22d years of king Henry VII. and the 6th of Henry VIII. Thomas Colepeper, esq. his eldest son, of Bedgebury, procured his lands to be *disgavelled* by the act of the 2d and 3d year of king Edward VI. in the latter of which he was sheriff. His grandson Anthony was of Bedgebury likewise, and was knighted by queen Elizabeth, who in her progress through Kent in 1573, honored this seat with her presence; and it is said in Camden's Remains, to the reputation of this family, that there were twelve knights and baronets alive, of this house of Colepeper, at one time. He had twelve sons and four daughters; of the surviving sons, Henry the third, was of Endford, in Wiltshire, clerk, and Thomas the fifth was of St. Stephen's, near Canterbury. Sir Alexander Colepeper, the eldest son, succeeding his father, resided at Bedgebury in the reign of king James I. He left an only daughter Anne, married to Thomas Snelgrave, esq. so that after his death this seat and estate seems to have descended, by the entail of it, to his next brother William Colepeper, esq. who died about the time of the restoration of Charles II. and his son Thomas Colepeper, esq. alienated Bedgebury, with its appendant manors, to Sir James Hayes, who married Rachel, viscountess Falkland, the daughter of Sir Anthony Hungerford, and widow of Lucius, viscount Falkland, the renowned friend of lord Clarendon. He rebuilt this seat, at a small distance from the antient mansion. He bore for his arms, *Argent, three escutcheons, gules*.

After his death, and much litigation in the court of chancery, Edward Stephenson, esq. who had a large mortgage on this estate, was put in the possession of it by that court, whose nephew Edward Stephenson, esq. afterwards possessed it, and on his death in 1782, it came to his cousin Capt. Edward Stephenson, who died in the East-Indies, and devised it to Miss Peach, and she sold it soon afterwards to John Cartier, esq. the present possessor of these manors, with the feat and estate of Bedgebury.

In the reign of queen Elizabeth, there was an extensive park adjoining to this seat, but it has been *disparked* many years. John Cartier, esq. has for some time resided at Bedgebury, where he kept his shrievalty in 1789, and has made great improvements to the house and lands adjoining.

A court baron is regularly held for the manor of Bedgebury.

Fig. 22 Extract from 1897 Sales Particulars



➤ THE † GROUNDS, † ➤

INCLUDE

The Charming Terraces & Lake-side Walks

with the before-mentioned Lovely Lawn, with SHRUBBERIES, TENNIS LAWN FOR TWO SETS, &c.

Rhododendrons and other beautiful Plants abound in quantity and variety, together with well-grown Evergreens.

There are Geometrical Flower Beds and most Delightful Foliaged Walks

THERE IS A LARGE

HIGH-WALLED KITCHEN GARDEN

in two divisions, in prolific bearing, and a

Second One at some Distance of about Three Acres,

which is at present let off.

The Pinetum is a Charming Resort, stocked with rare Conifers in full growth and health.



THE GLASS comprises—

A SPAN-ROOF GREENHOUSE, a LEAN-TO PEACH AND NECTARINE HOUSE in two divisions, SPAN-ROOF CUCUMBER-HOUSE, a VINERY in two divisions leading to a

LARGE CONSERVATORY,

TWO PLANT-HOUSES and THREE RANGES OF HEATED PITS; also a Second Vinery in two divisions in the Kitchen Garden.



➤ The † Lakes † ➤

are stocked with Fish and Wild Fowl, and afford good Boating in Summer and Skating in Winter, while the Streams about the Estate yield a fair quantity of Trout.

The Pike Fishing in the Great Lake of 20 Acres is noted.



Kent Compendium of Historic Parks & Gardens – 2009 review of Tunbridge Wells Borough

Fig. 23 Photographs of Bedgebury Park January 2009



Above left: The north-west main front of the mansion

Above right: Path lined by yew balls

Left: Mature trees by the Great Lake