

Fig. 7 J. Andrews, W. Dury and W. Herbert, *A Topographical Map of the County of Kent ...* 1769

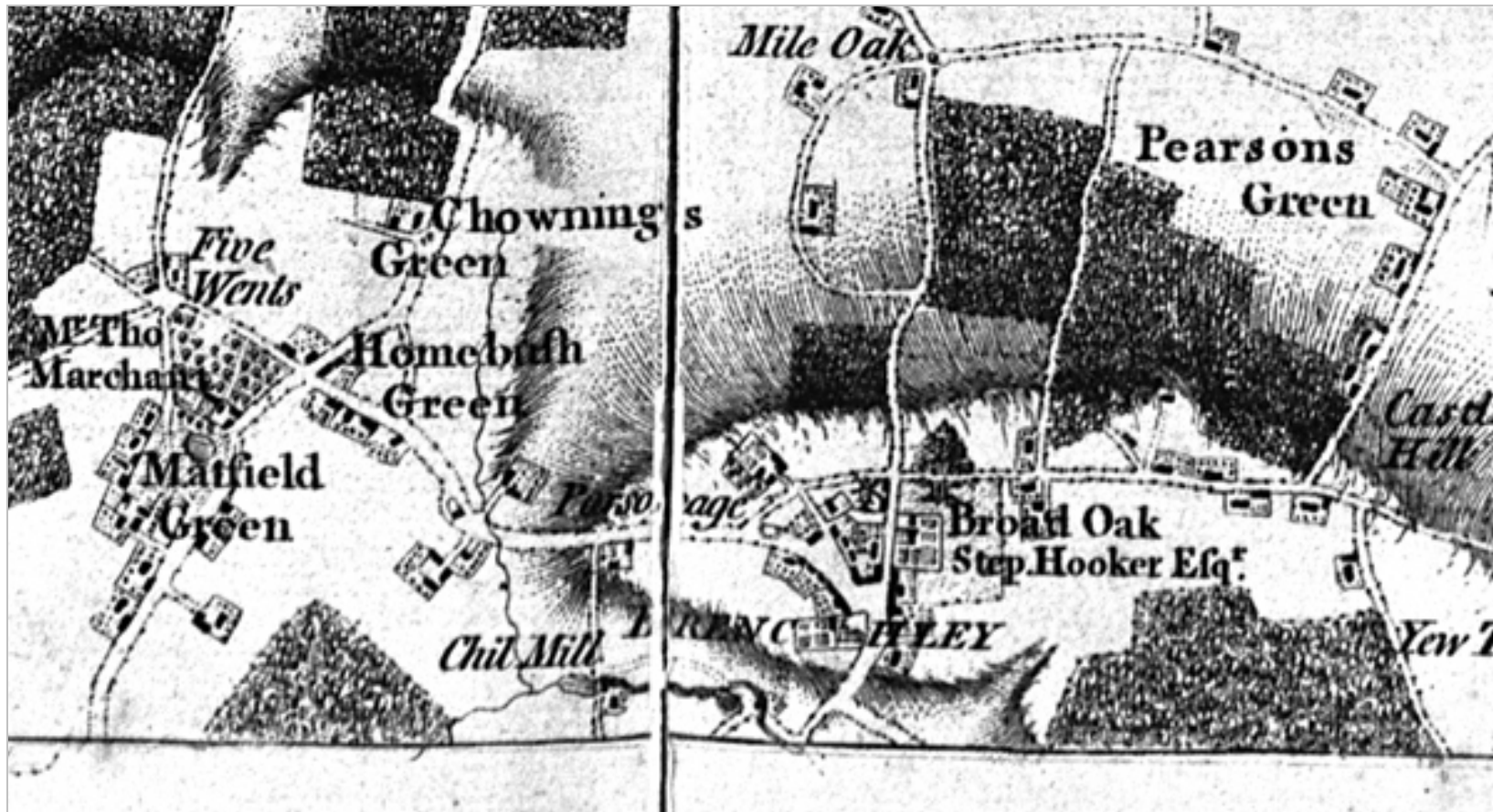


Fig. 8 Edward Hasted map Speldhurst 1778

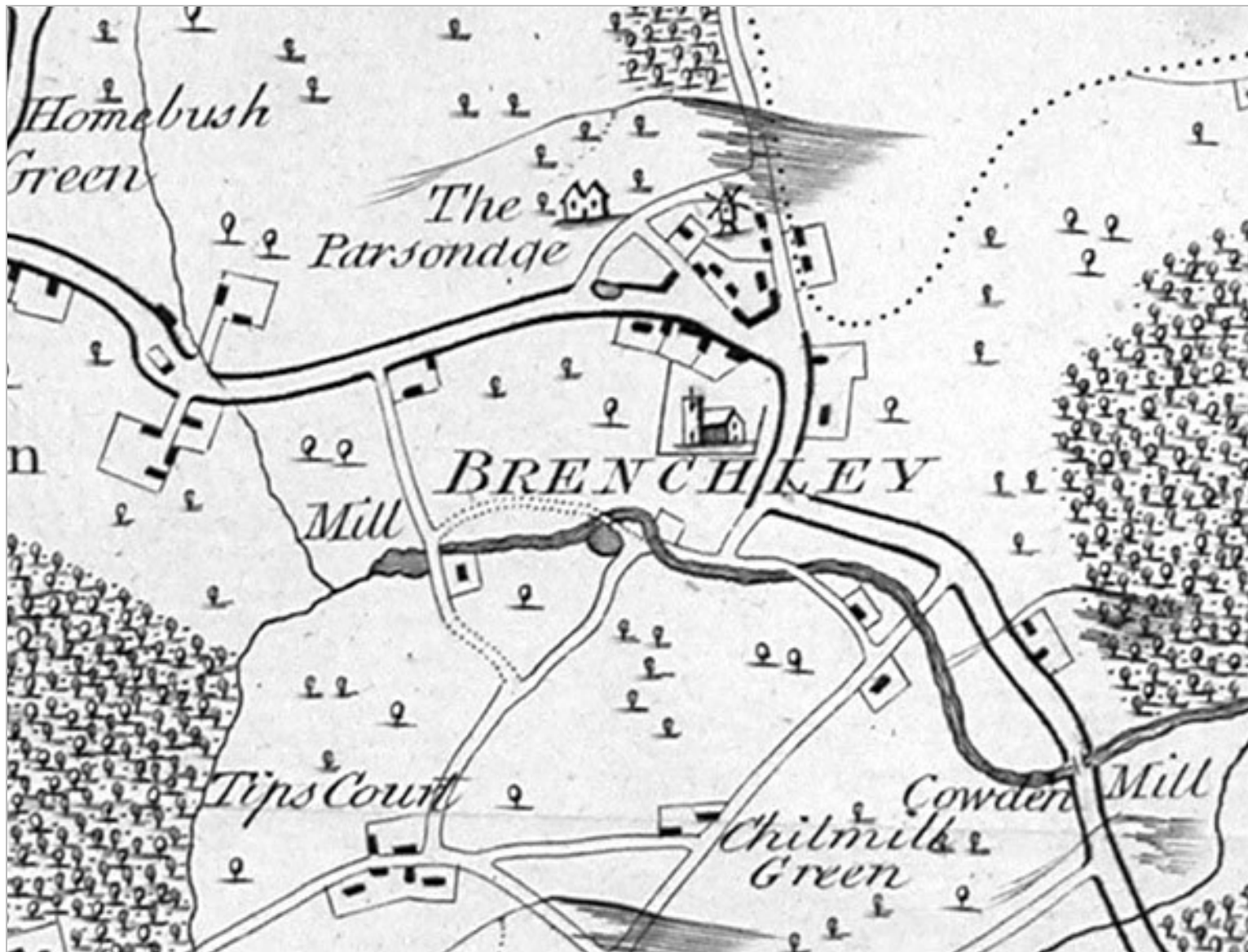
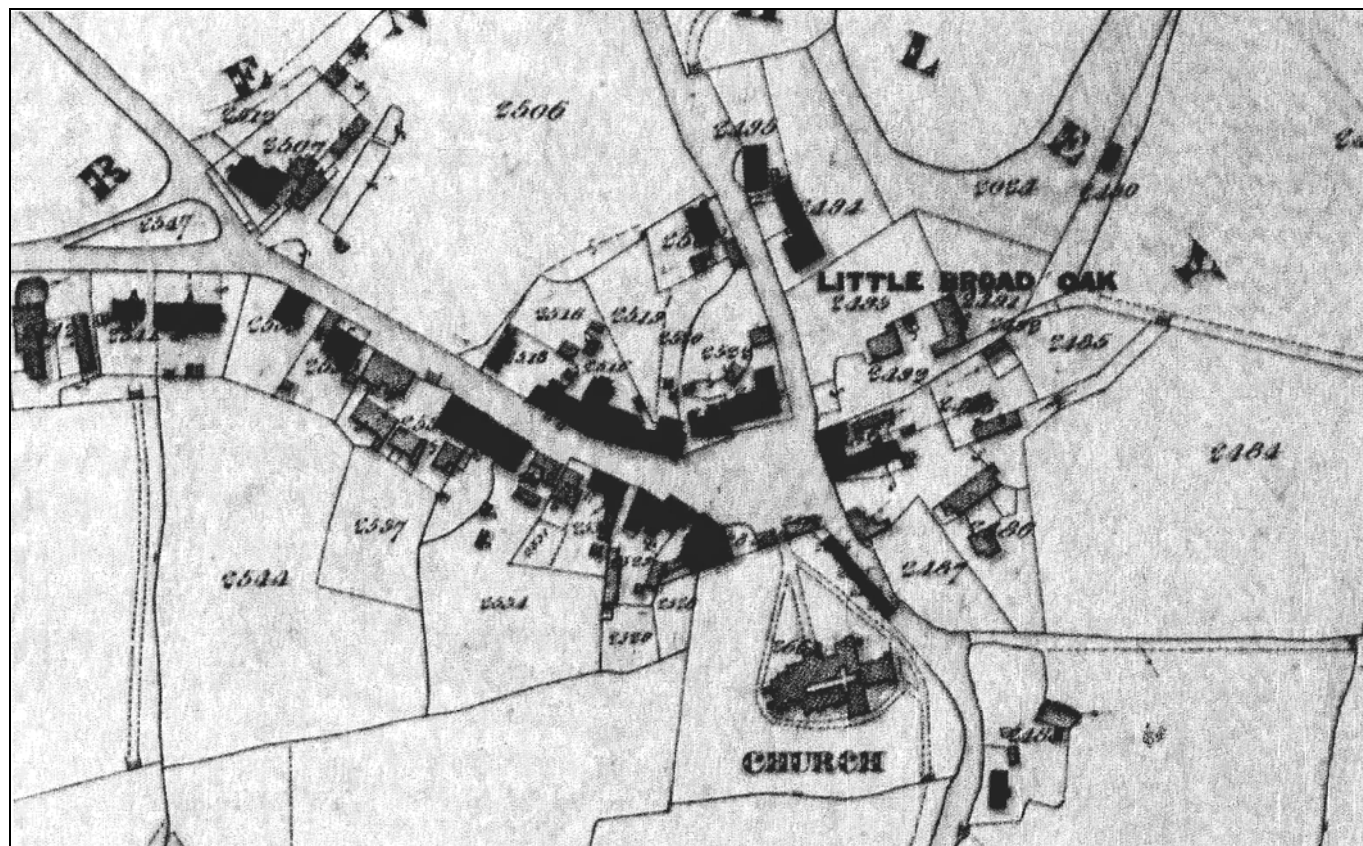


Fig. 9 William Mudge, *An Entirely new and accurate survey...* 1801



A detailed historical map of the Brenchley area in Kent, England. The map shows the River Aron flowing through the center, with several mills and factories marked. Key locations include Brenchley, Honnington, and Rangling. The map also shows the surrounding landscape with fields, woods, and a railway line. The map is titled 'Brenchley' and 'Kent'.

Fig. 11 Tithe map and apportionment 1842-44



Tithe apportionments – Parsonage Farm

2550 House and garden – Parsonage

2551 Oast plat and pasture

2552 Barn & lodge

2553 Little orchard

2554 Pigeon House field

2561 Larch plantation

2549 Walk field

2565 Yew Tree field

2567 Hither Birch field

2568 Further Birch field

Owner George Campion Courtehope: occupier Edward Monckton approx 30 acres

Fig. 12 Ordnance Survey 1st edn 6" map (1862)

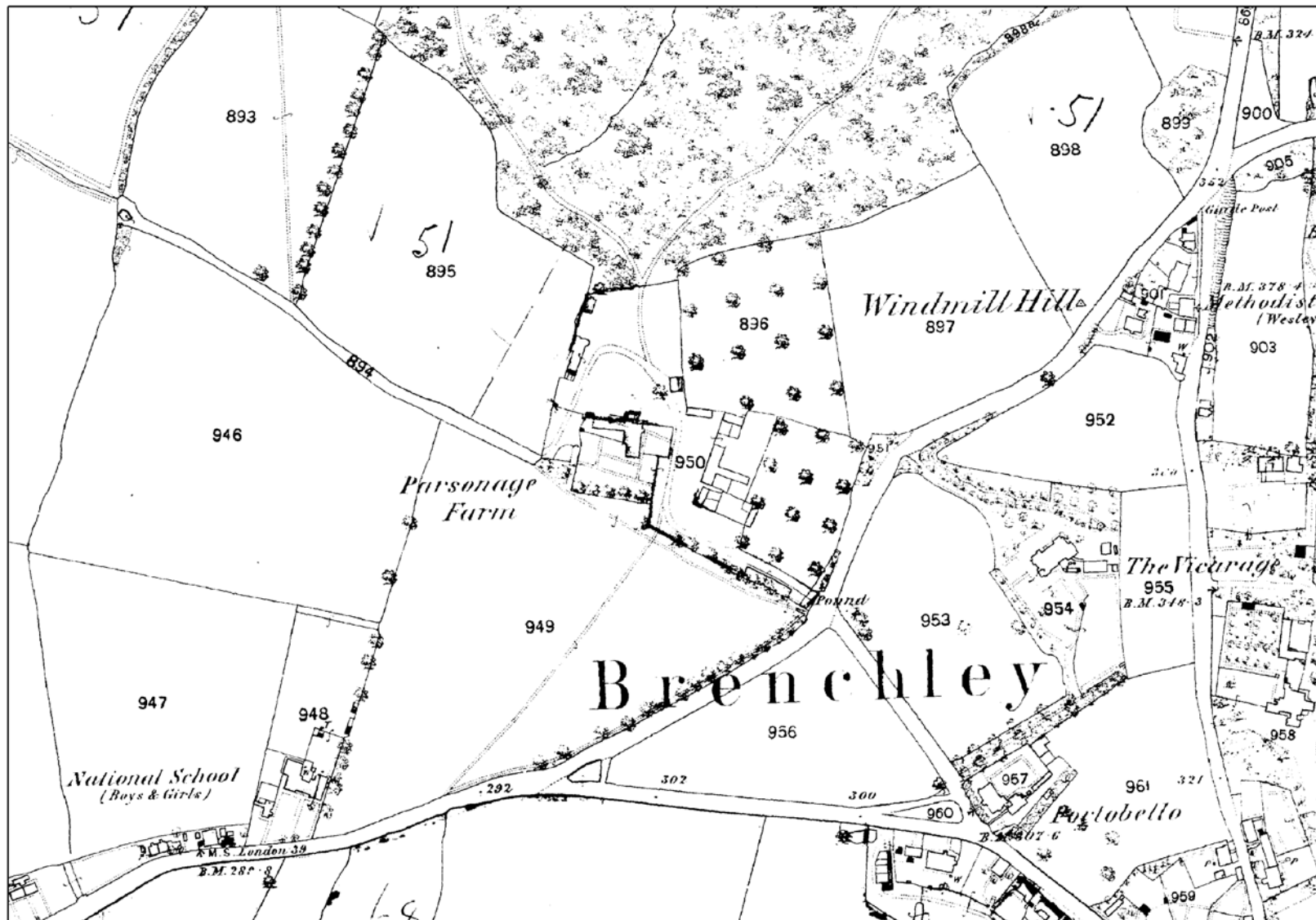
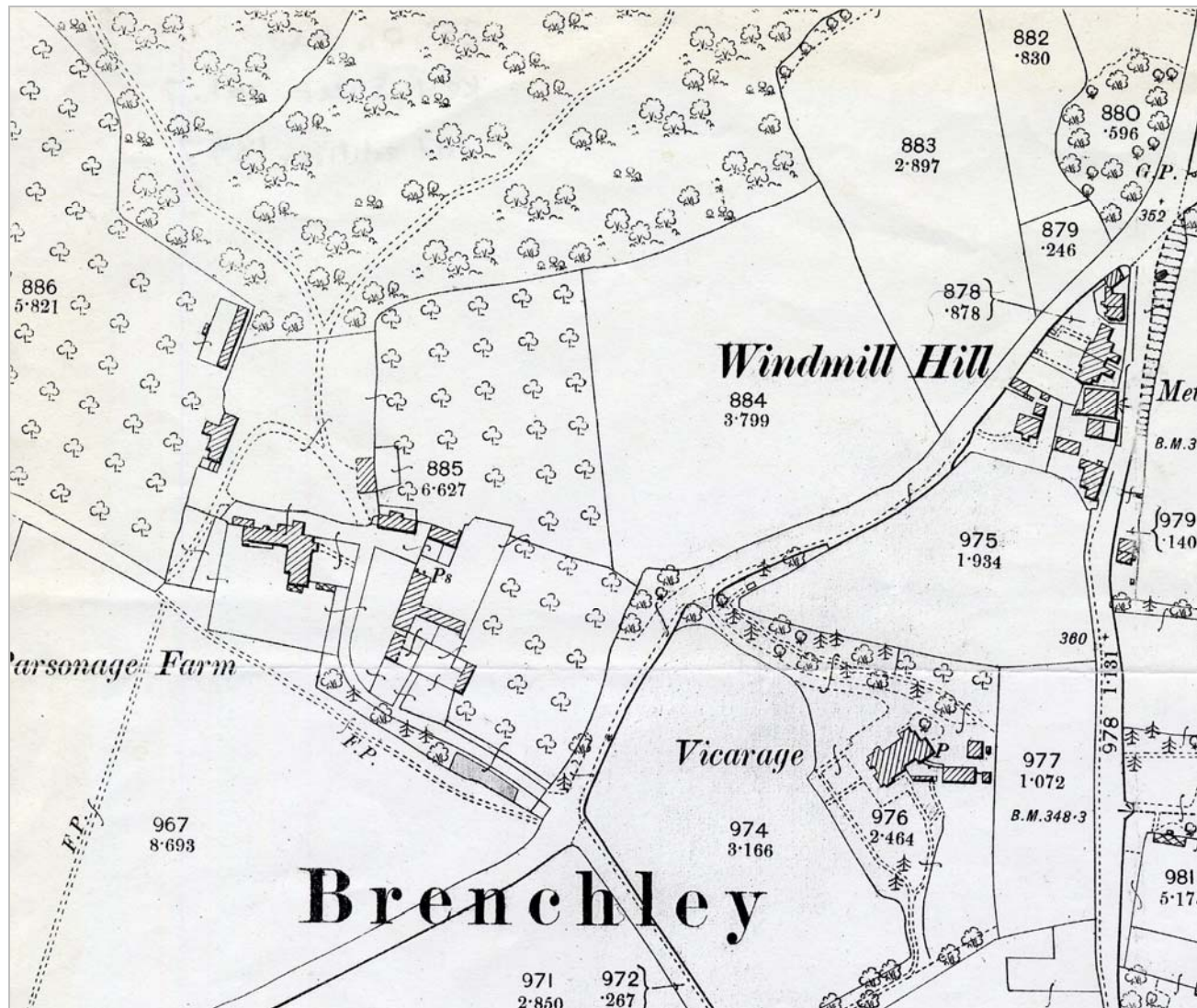
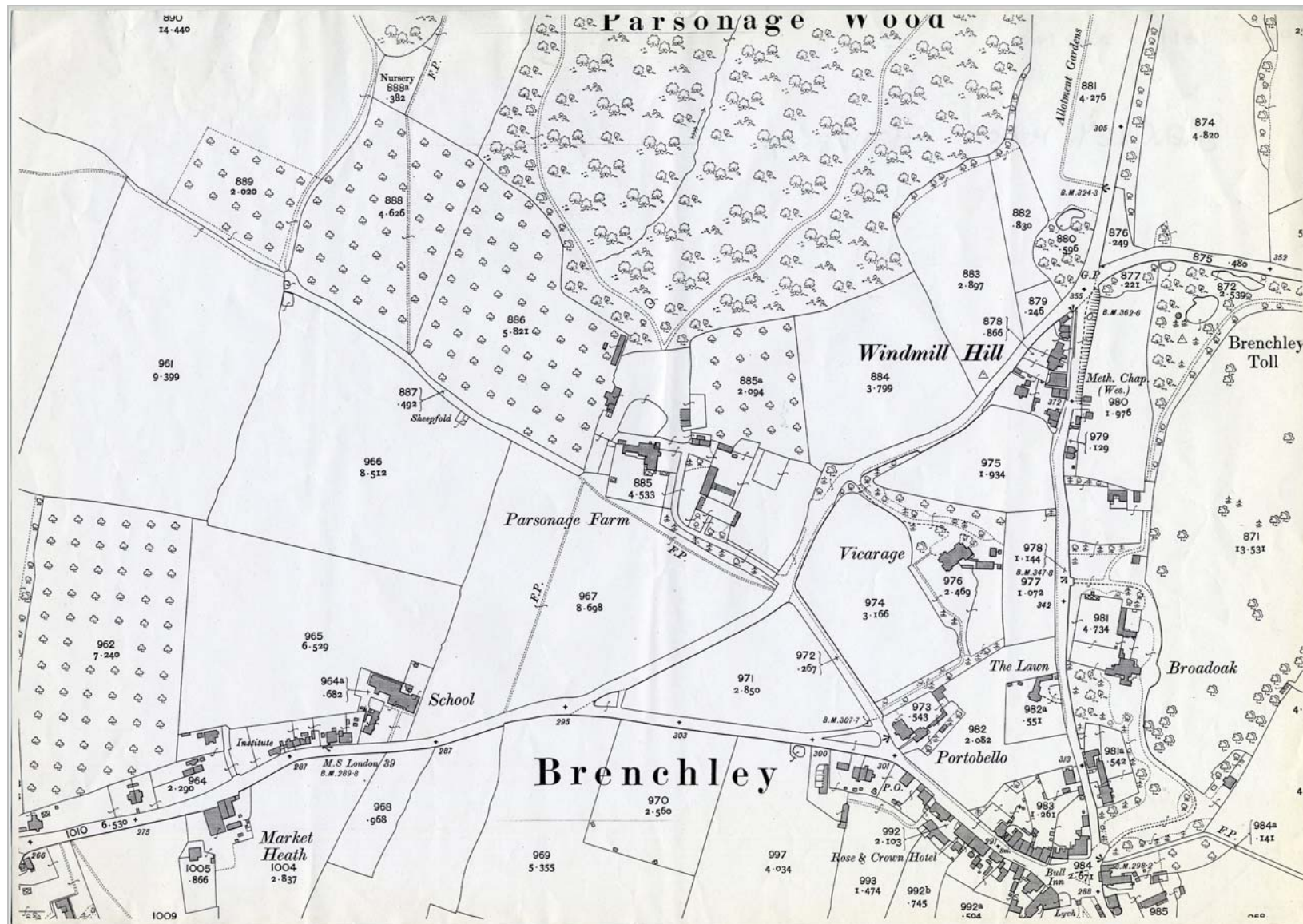


Fig. 13 Ordnance Survey 2nd edn 25" map (1897)



Kent Compendium of Historic Parks & Gardens – 2009 review of Tunbridge Wells Borough

Fig. 14 Ordnance Survey 3rd edn 25" OS map (1908)

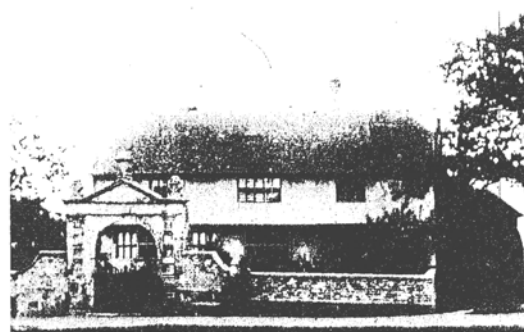
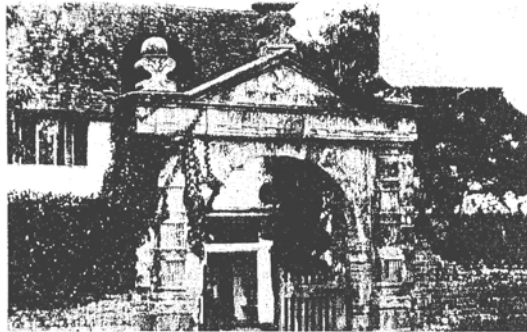


Kent Compendium of Historic Parks & Gardens – 2009 review of Tunbridge Wells Borough

Fig. 15 Ordnance Survey revd edn 25" OS map (1938)



Fig. 16 William Hodges, 4 black-and-white photographs of 'The Old Parsonage' (1850s-70s)



"The Old Parsonage", Brenchley, now known as "Brenchley Manor". It is believed to have been erected in 1522. The archway is one of the earliest examples of Italian workmanship in England and on the left hand side of the arch will be seen a stone drinking trough, while on the opposite side is a stone mounting block. The oak tree on the right of the picture is known as the Doomsday Oak and is thought to be about 1,000 years old. The house originally belonged to the Priors of Tonbridge and at the time of the suppression of the Monasteries it was given by Henry VIII to Cardinal Wolsey. It was also the home of the Rev. John Monckton, Vicar of Brenchley, 1652–1709. The pictures on the left were taken before several improvements were made to the property – note overgrown ivy, ill repair of brick wall, and lack of front chimney. To improve the aspects to and from the house, the somewhat overpowering examples of topiary and the tree in the front garden were removed.

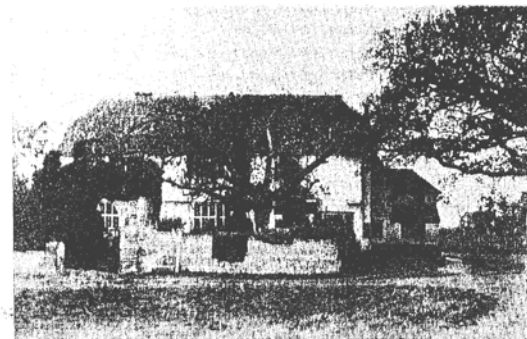
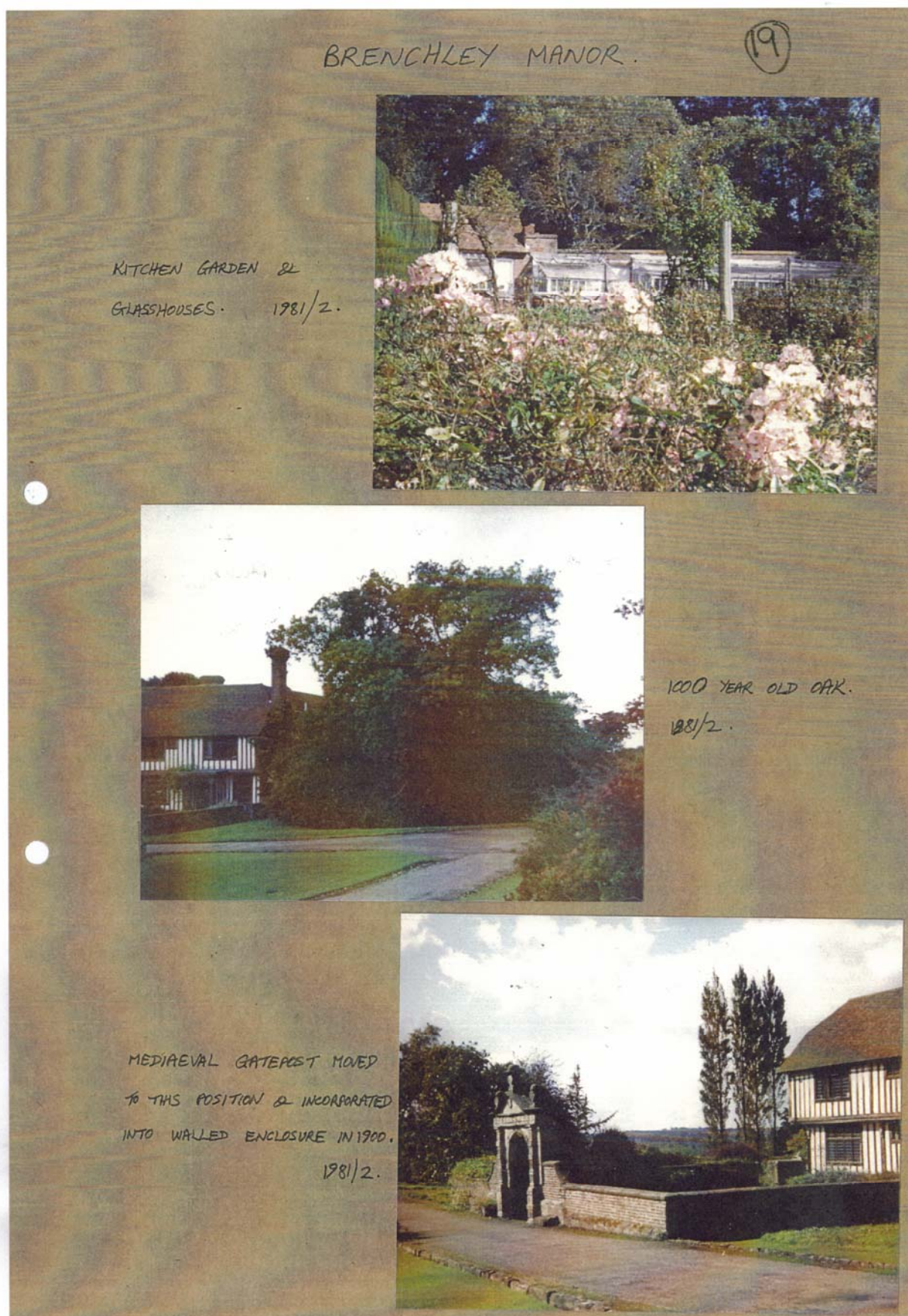


Fig. 17 colour photographs of Brenchley Manor 1981/82





SCULPTURED YEW HEDGE REVEALING GLIMPSES OF
SECRET GARDEN BEYOND. 1981/2.



SECRET GARDEN (PREVIOUSLY A BULL PEN).
1981/2.

BRENCHLEY MANOR CONT. .



HERBACEOUS BORDERS & YEW HEDGE .
1981/2 .






FRONT FACE OF HOUSE WITH HERBACEOUS BORDERS
& MEDIEVAL GATEPOST, 1981/2 .

Fig. 18 Sales particulars. Hampton and Son. Oct 1987

22

Hampton & Sons



BRANCHLEY, KENT

Branchley Manor

about 6 miles from Tunbridge Wells, 7 miles from Tonbridge (London 40 minutes).

Beautifully restored, magnificent early 16th Century timber framed manor house with well documented history, set in superb secluded gardens and grounds and including a staff cottage.

Principal reception rooms, fully equipped kitchen with adjacent family room, range of domestic offices, main suite of room with sitting room, dressing room and 2 bathrooms, guest suite of bedroom and bathroom, 4 further bedrooms and 4th bathroom. Beautiful gardens, paddocks, garaging and stabling. Detached 3 bedroom staff cottage. About 8 acres.

Offers invited in the region of £1.25 million

See Estate Office, High Street, Mayfield, East Sussex TN20 6AE (0435) 872294 and High Street, Sevenoaks, Kent TN13 1JG (0732) 460222

Kent Compendium of Historic Parks & Gardens – 2009 review of Tunbridge Wells Borough

Fig. 19 Photographs of Brenchley Manor February 2009



Top Left: Drive

Top Right: Knot garden and C16 archway

Left: View to the arch along the borders