

Tunbridge Wells Borough



Tunbridge Wells Borough Council

Draft Local Plan Regulation 18 Draft Policies Maps

Version for consultation

August 2019



Draft Local Plan (Reg 18)

This document contains Policies Maps which support the Draft Local Plan (Reg 18), Table 1 below details the individual policies maps and their corresponding inset number. The policies maps legend is found on the following page. Map 1 is the Borough Wide Policies Map and illustrates the area that each of the inset maps covers. This map also displays policies TP 5 & TP 6 as these extend over a wide area of the borough.

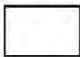

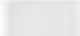
When viewing these maps electronically there is the ability to zoom in using either the + and – buttons on the pdf viewer or by pressing CTRL and the wheel button on your mouse. If you require a higher resolution copy of any of the maps, please email the Planning Policy Team (planning.policy@tunbridgewells.gov.uk).

Map Number	Description
N/A	Draft Policies Map Legend
1	Borough Wide Policies Map detailing location of inset maps
2	Royal Tunbridge Wells and Southborough
3	Royal Tunbridge Wells Centre
4	Southborough
5	Tudeley Village
6	Five Oak Green
7	Brook Farm (Capel)
8	Paddock Wood
9	Cranbrook
10	Cranbrook Town Centre
11	Sissinghurst
12	Hartley (Cranbrook)
13	Hawkhurst (Highgate)
14	Hawkhurst (The Moor)
15	Gills Green
16	Benenden
17	East End (Benenden)
18	Iden Green
19	Bidborough
20	Brenchley
21	Matfield
22	Frittenden
23	Goudhurst
24	Kilndown
25	Horsmonden
26	Lamberhurst
27	Langton Green
28	Pembury
29	Rusthall
30	Sandhurst
31	Speldhurst



Tunbridge Wells Borough Council

Draft Local Plan Policies Map Legend

LOCAL PLAN CONTEXT

-  Local Plan Boundary
-  Parish Boundaries
-  Neighbouring Authorities


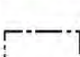




STRATEGIC

-  Metropolitan Green Belt *STR 4*
-  Proposed Limits to Built Development *STR 10*

SITE ALLOCATIONS

-  Site Allocation Boundary
-  Community Use Buffer
-  Open Space and Landscape Buffer
-  Safeguarded Land Buffer
-  Site Allocation Policy Point

ENVIRONMENT

-  Heritage Asset; Ancient Woodland *EN 7*
-  Heritage Asset; Conservation Areas *EN 7*
-  Heritage Asset; Historic Parks Gardens *EN 7*
-  Shop Fronts *EN 8*
-  Protection of Designated Sites and Habitats *EN 12*
-  Ashdown Forest 7km Buffer *EN 13*



Local Green Space *EN 17*



Landscape within the Built Environment *EN 18*



Arcadian Areas *EN 19*



High Weald Area of Outstanding Natural Beauty *EN 21*

ECONOMIC DEVELOPMENT



Key Employment Area; *ED 1*



Town and Rural Service Centre Boundaries *ED 9*



Primary Shopping *ED 11*



Retail Frontage *ED 11*



Neighbourhood Centres *ED 12*

TRANSPORT AND PARKING



Parking Standards; Parking Zone A *TP 3*



Car Parks *TP 4*



Safeguarded Railways *TP 5*



Safeguarded Route *TP 6*



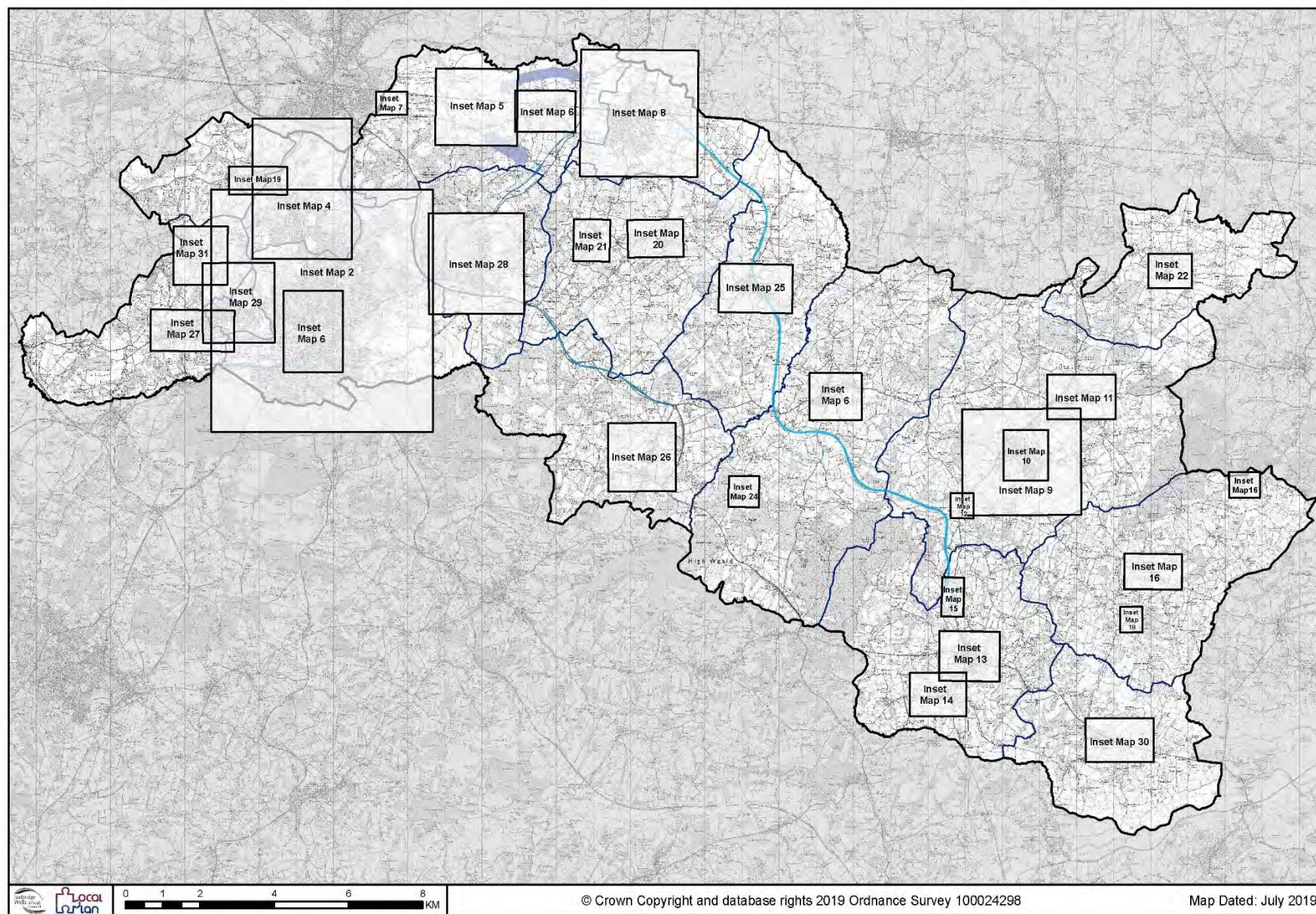
Proposed Link Route *TP 6*

OPEN SPACE, SPORT AND RECREATION

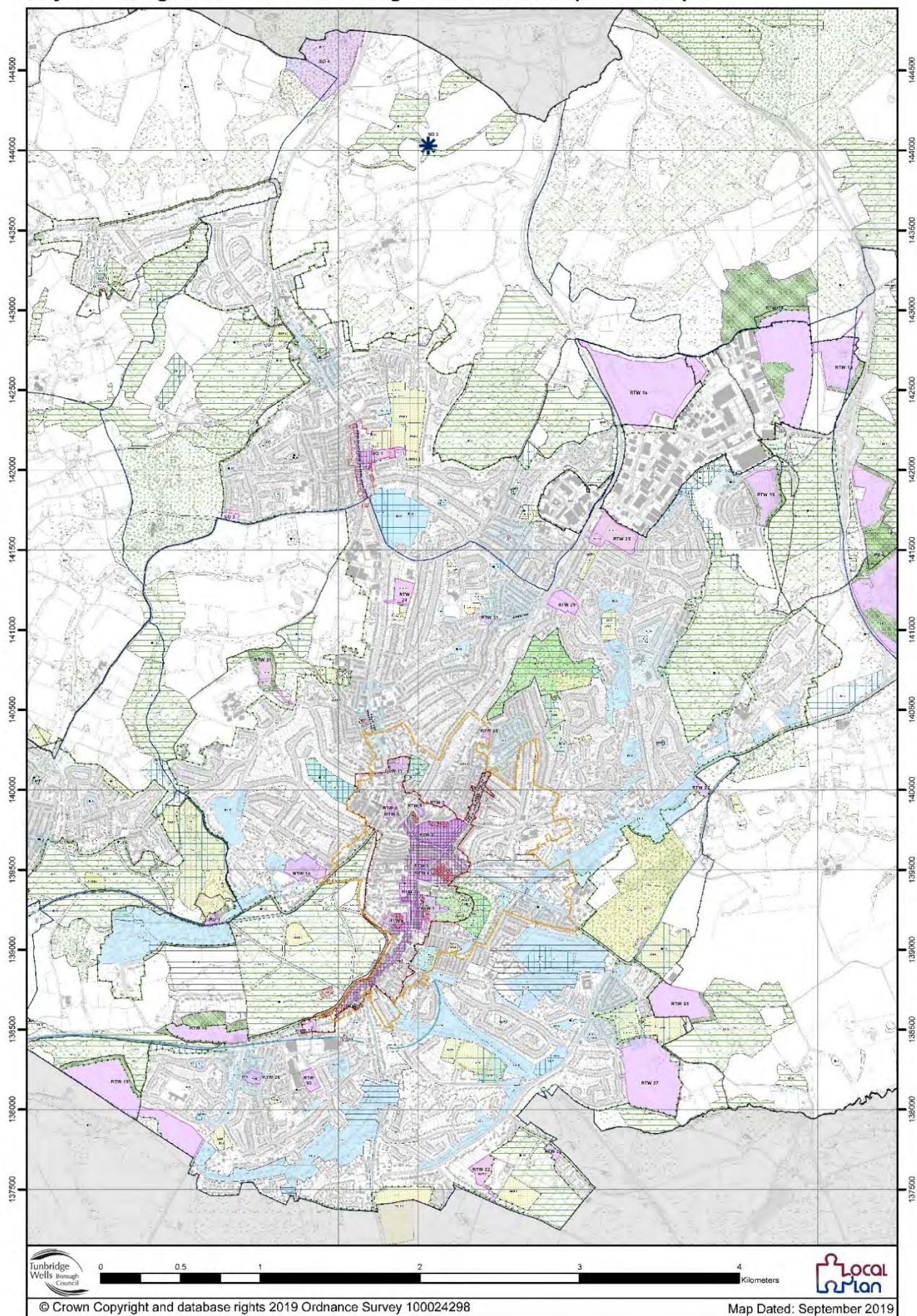


Open Space, Sport and Recreation *OSSR 1*

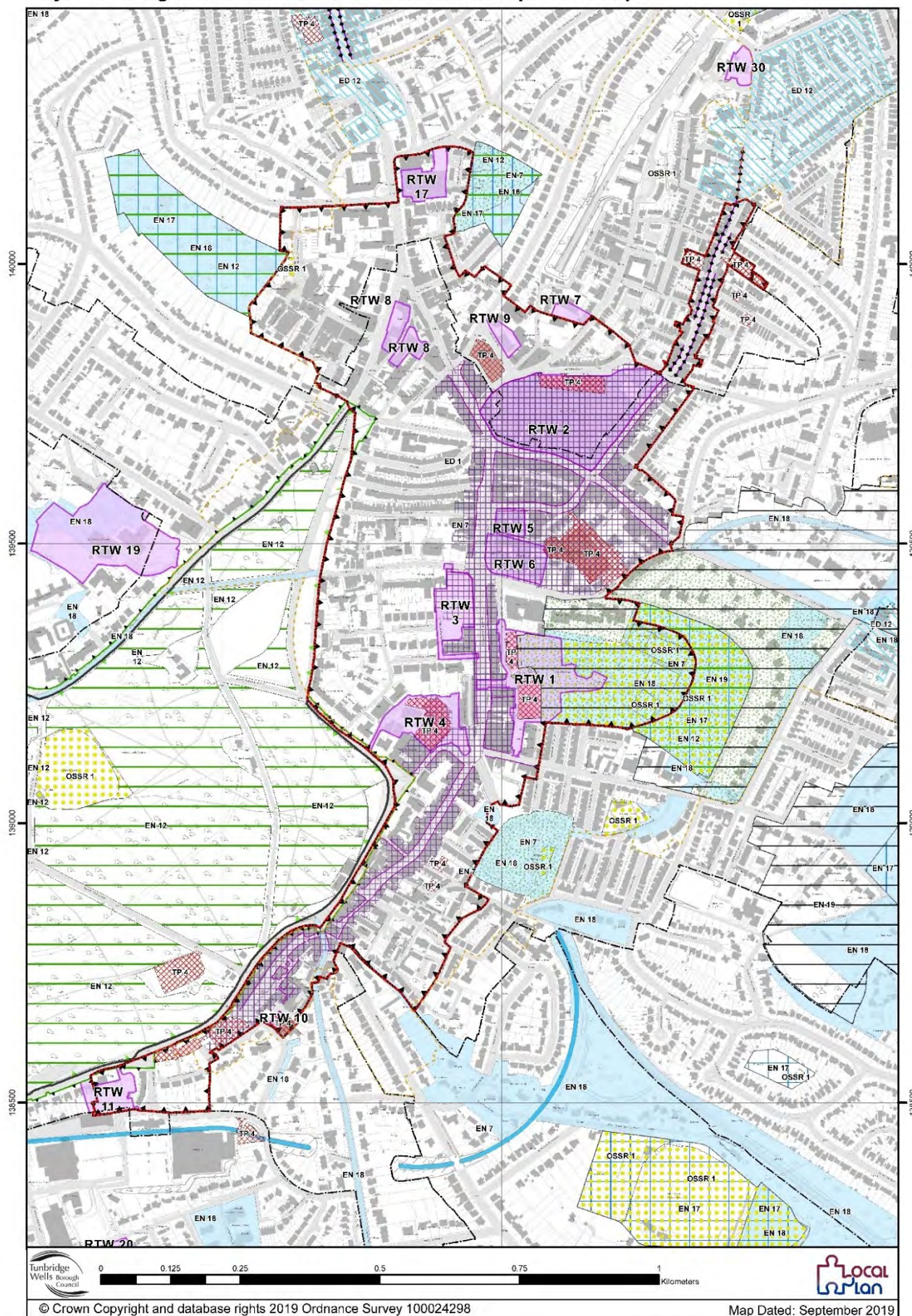
Tunbridge Wells Borough Council Draft Policies Map



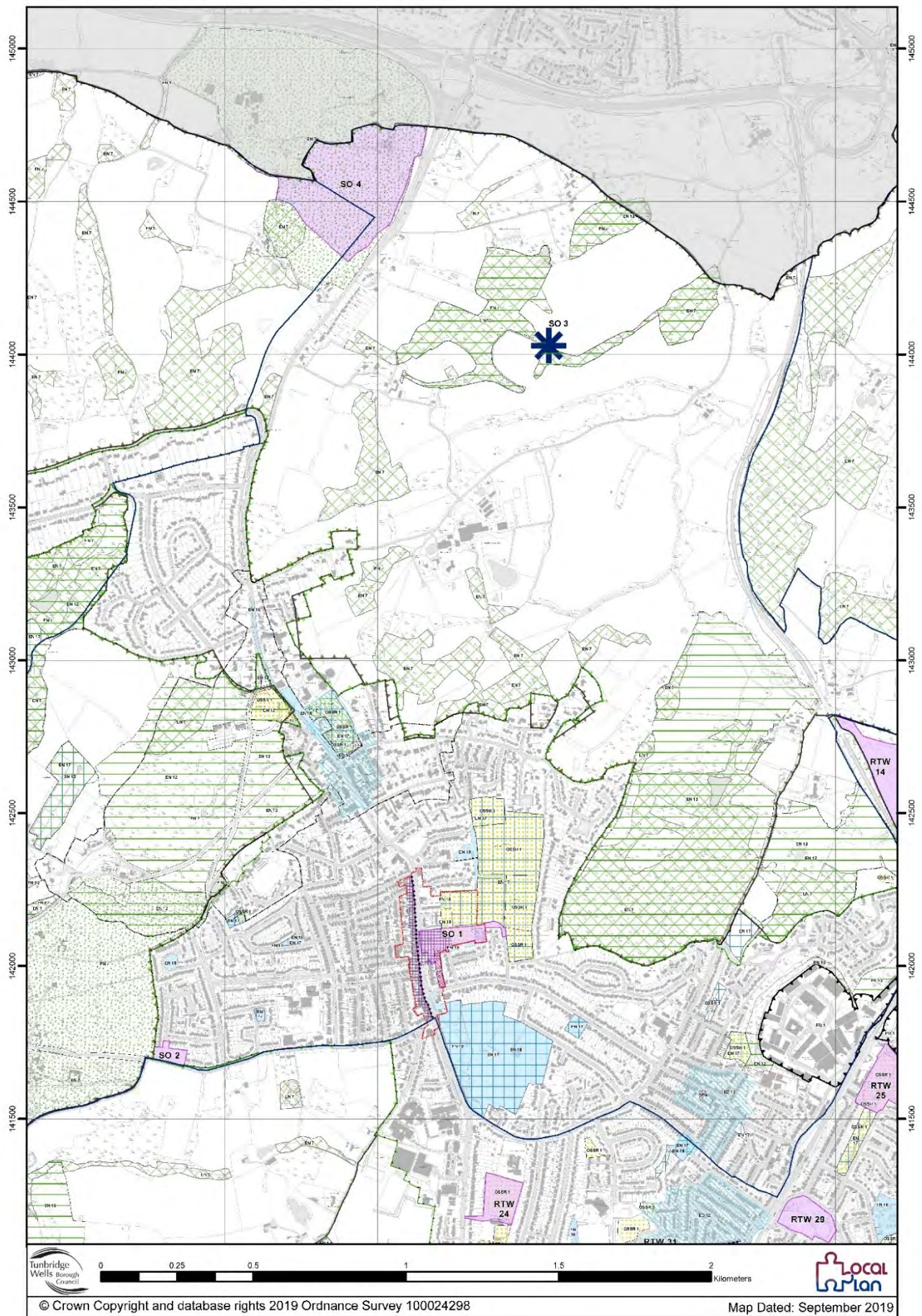
Royal Tunbridge Wells and Southborough Draft Policies Map - Inset Map 2



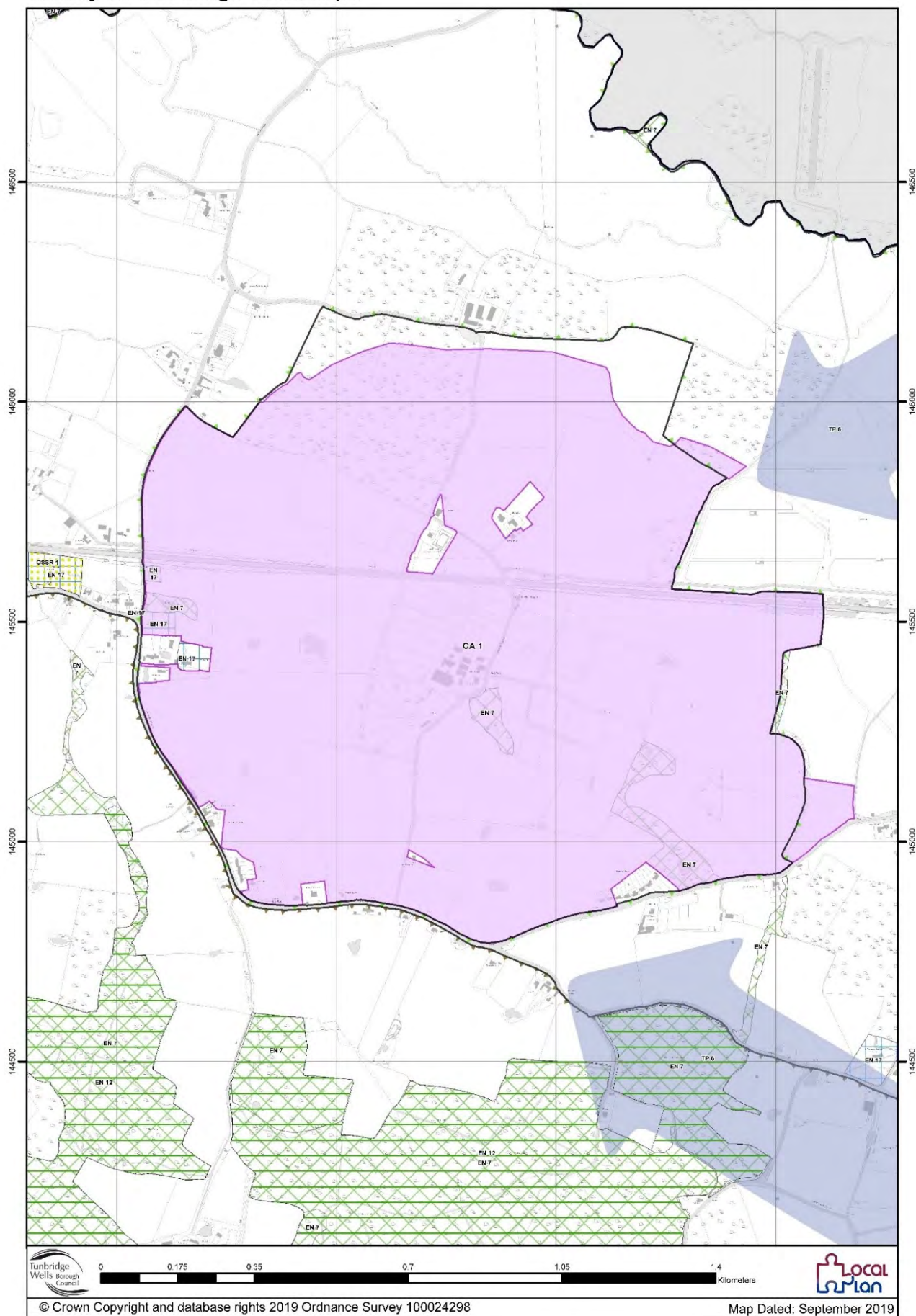
Royal Tunbridge Wells Town Centre Draft Policies Map - Inset Map 3



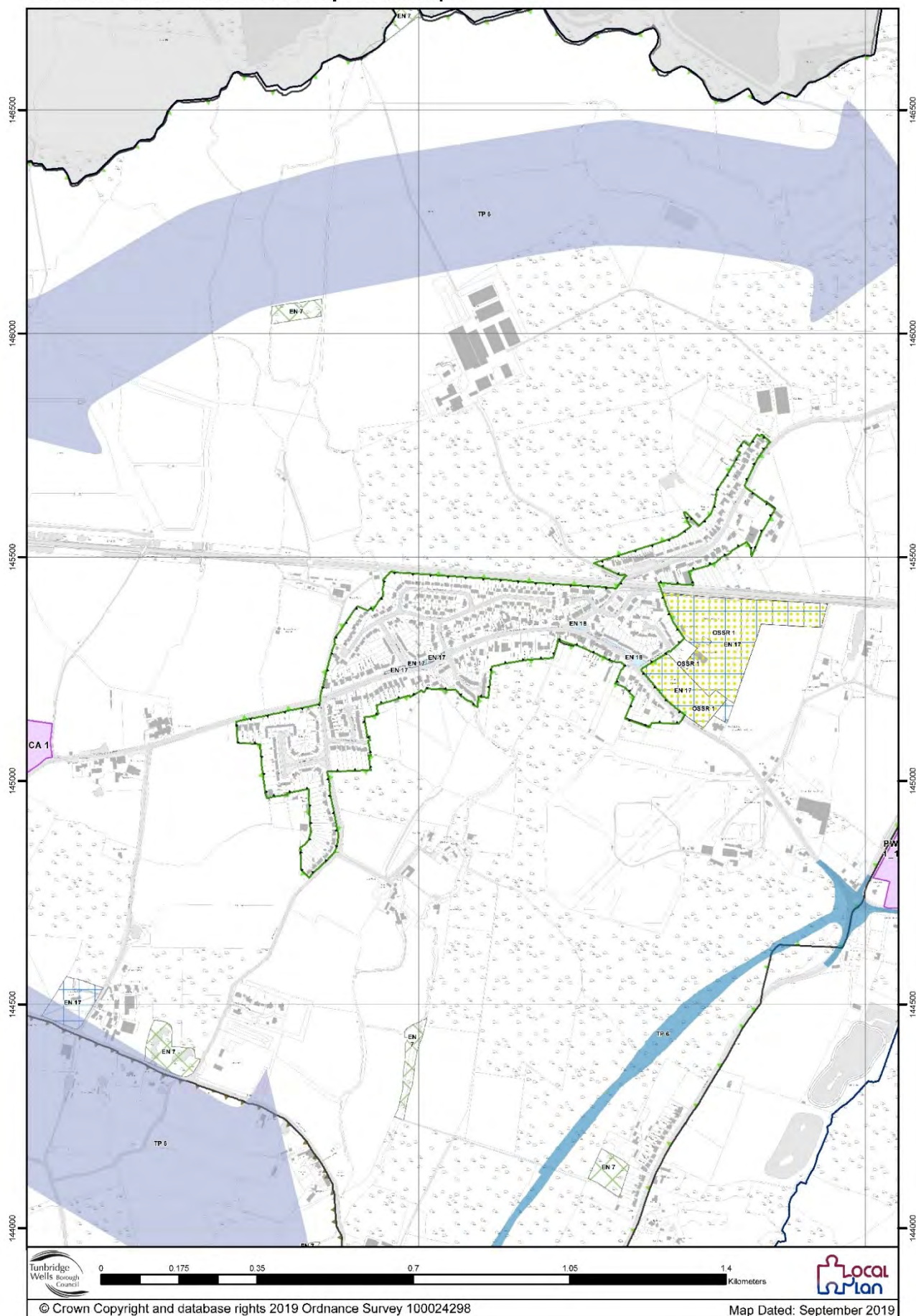
Southborough Draft Policies Map - Inset Map 4



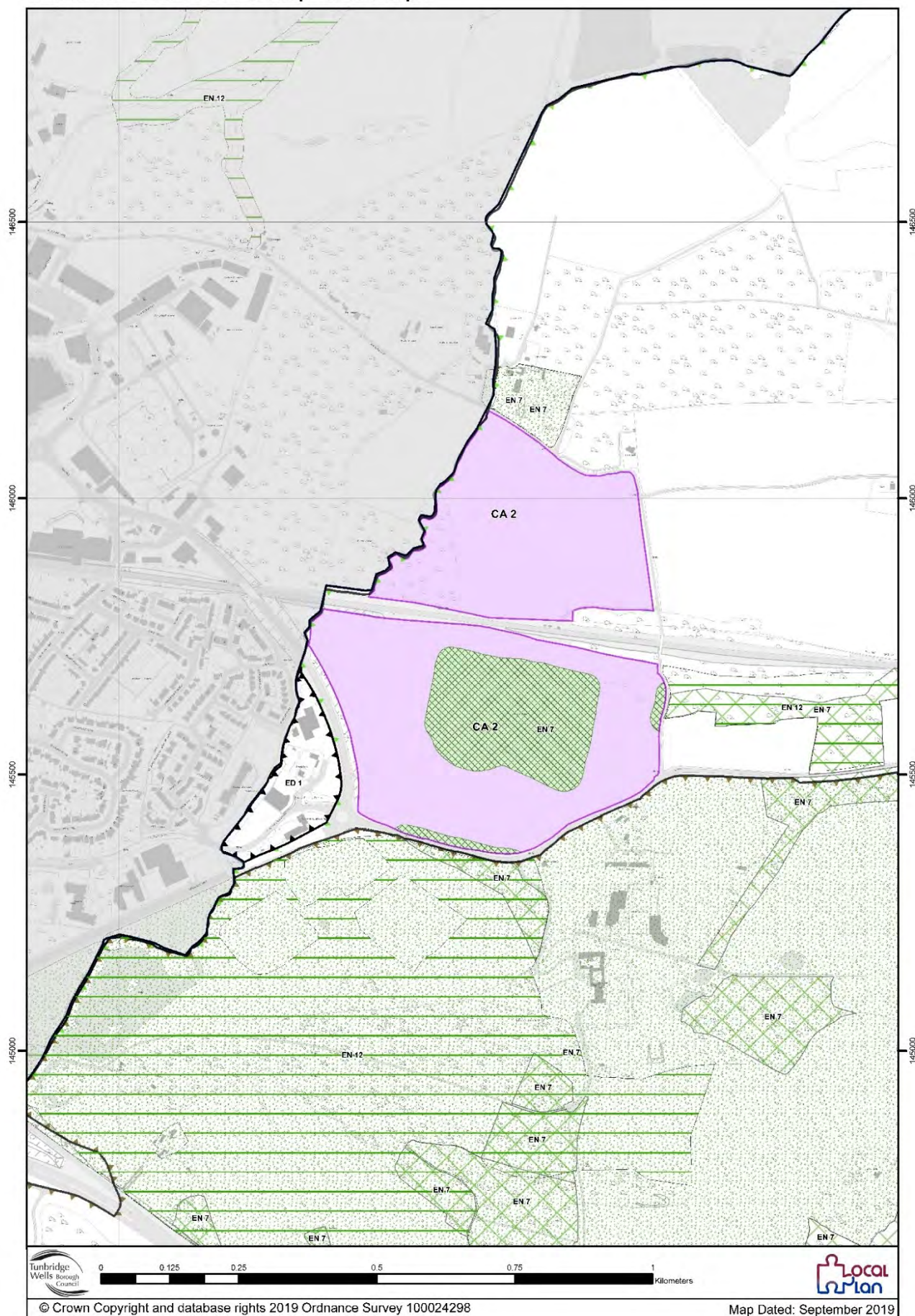
Tudeley Garden Village - Inset Map 5



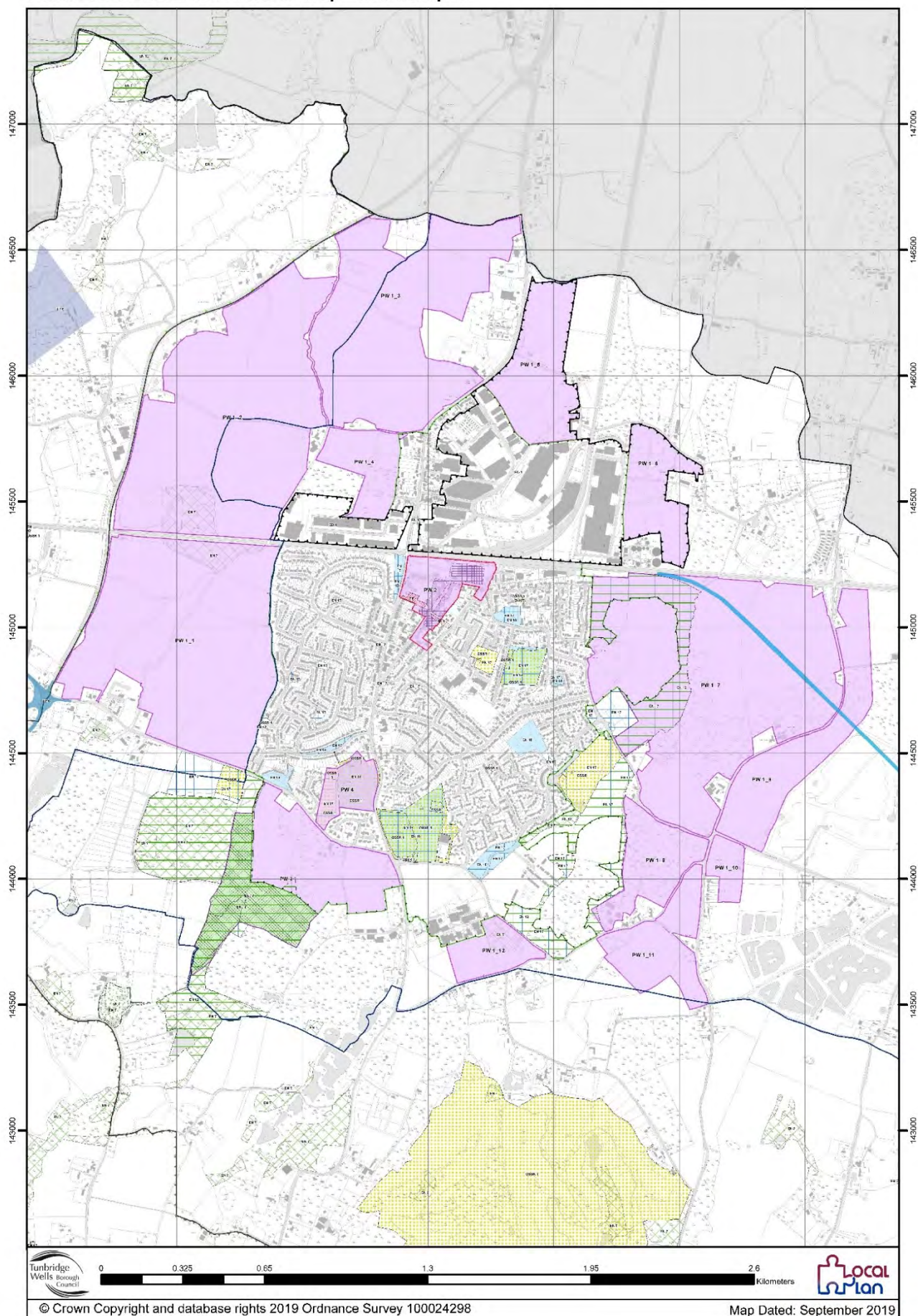
Five Oak Green Draft Policies Map - Inset Map 6



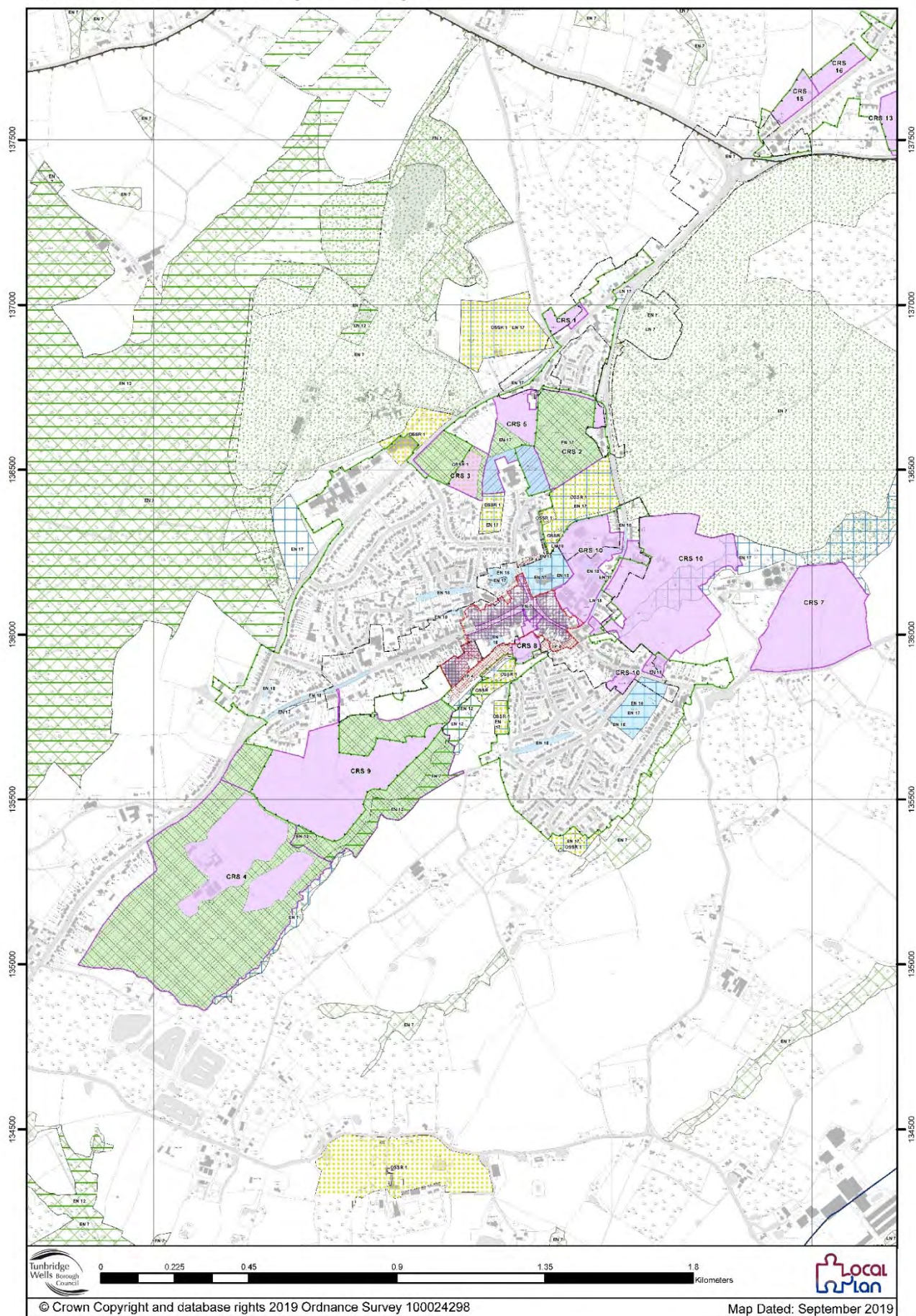
Brook Farm Draft Policies Map - Inset Map 7



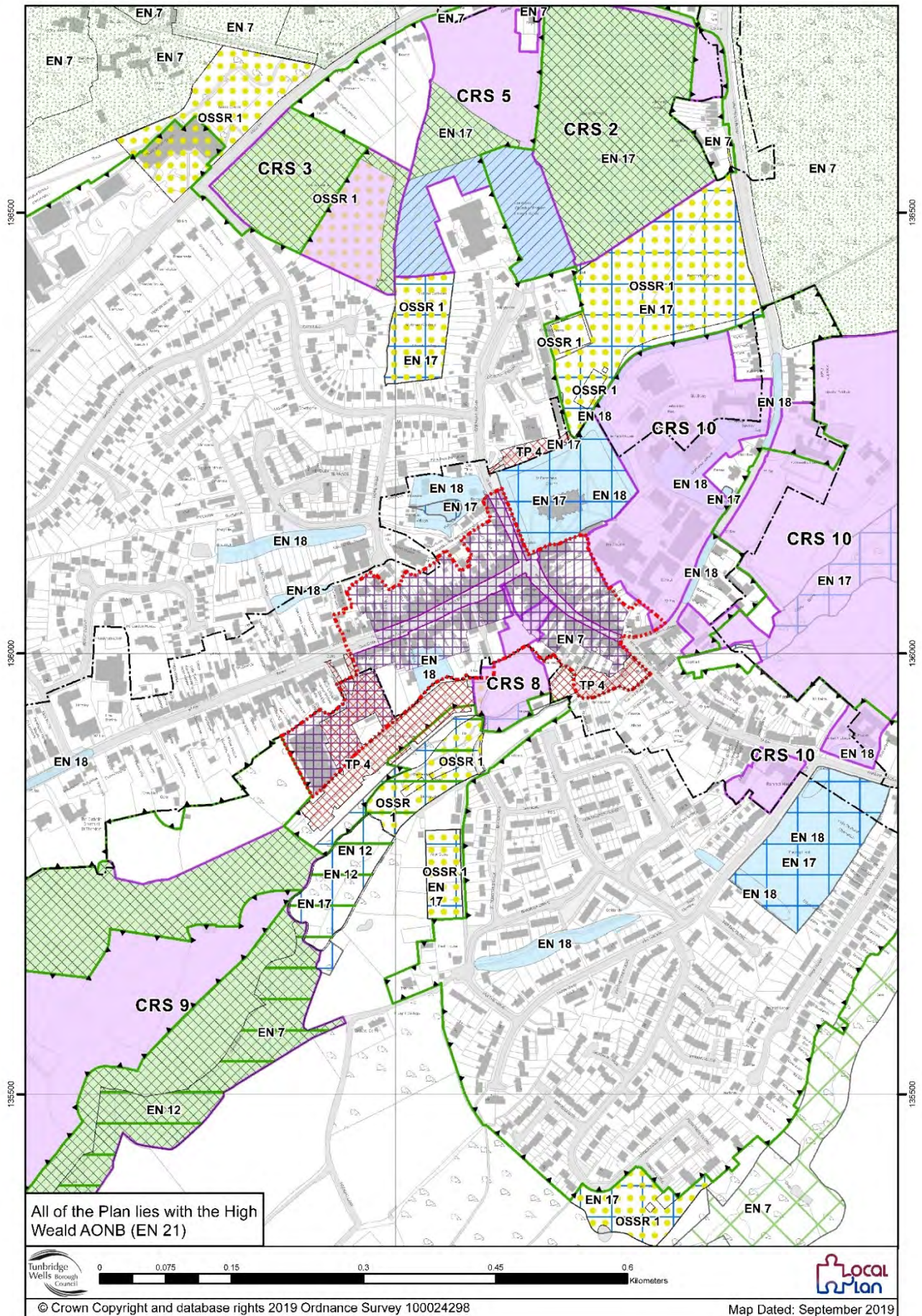
Paddock Wood Draft Policies Map - Inset Map 8



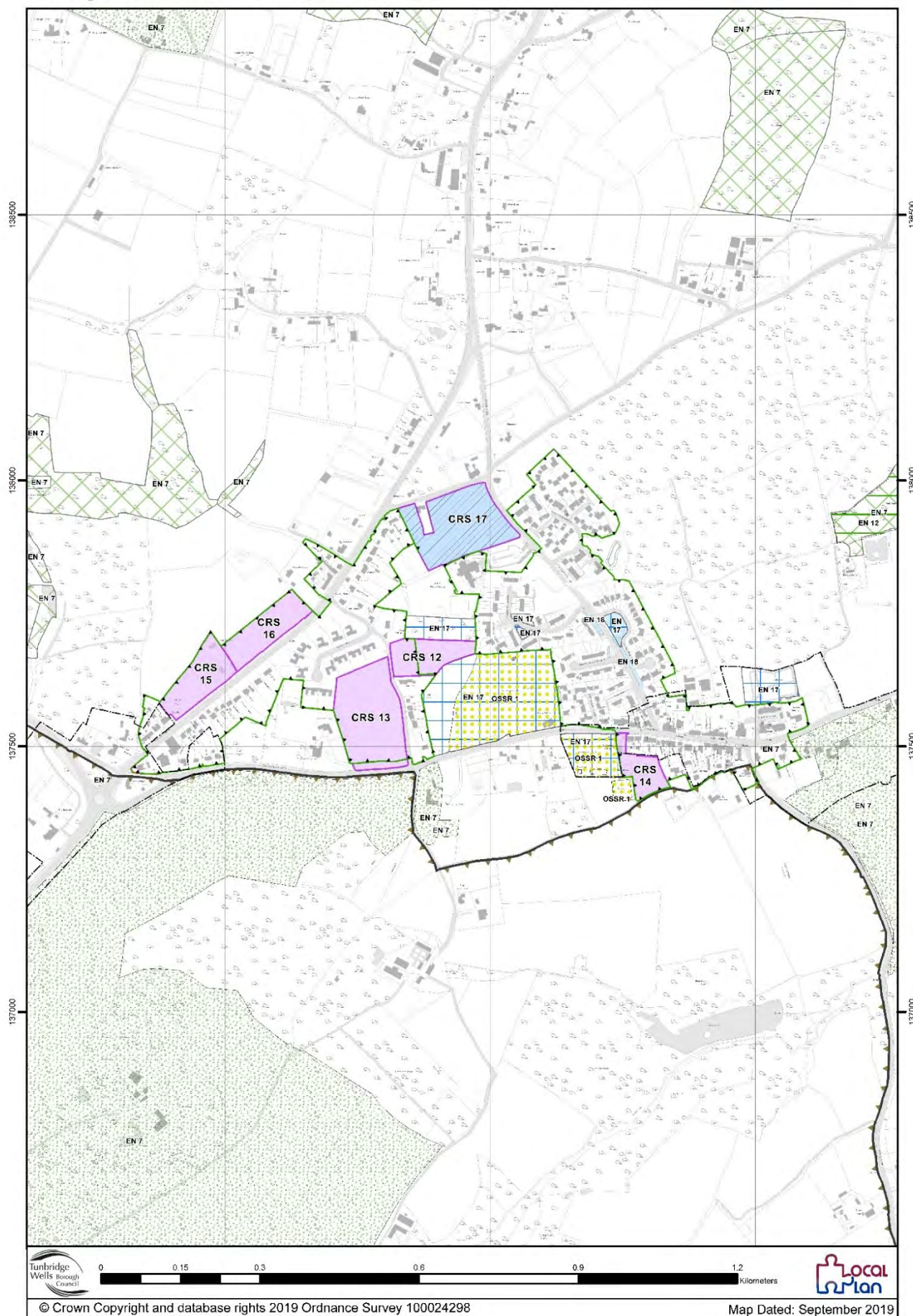
Cranbrook Draft Policies Map - Inset Map 9



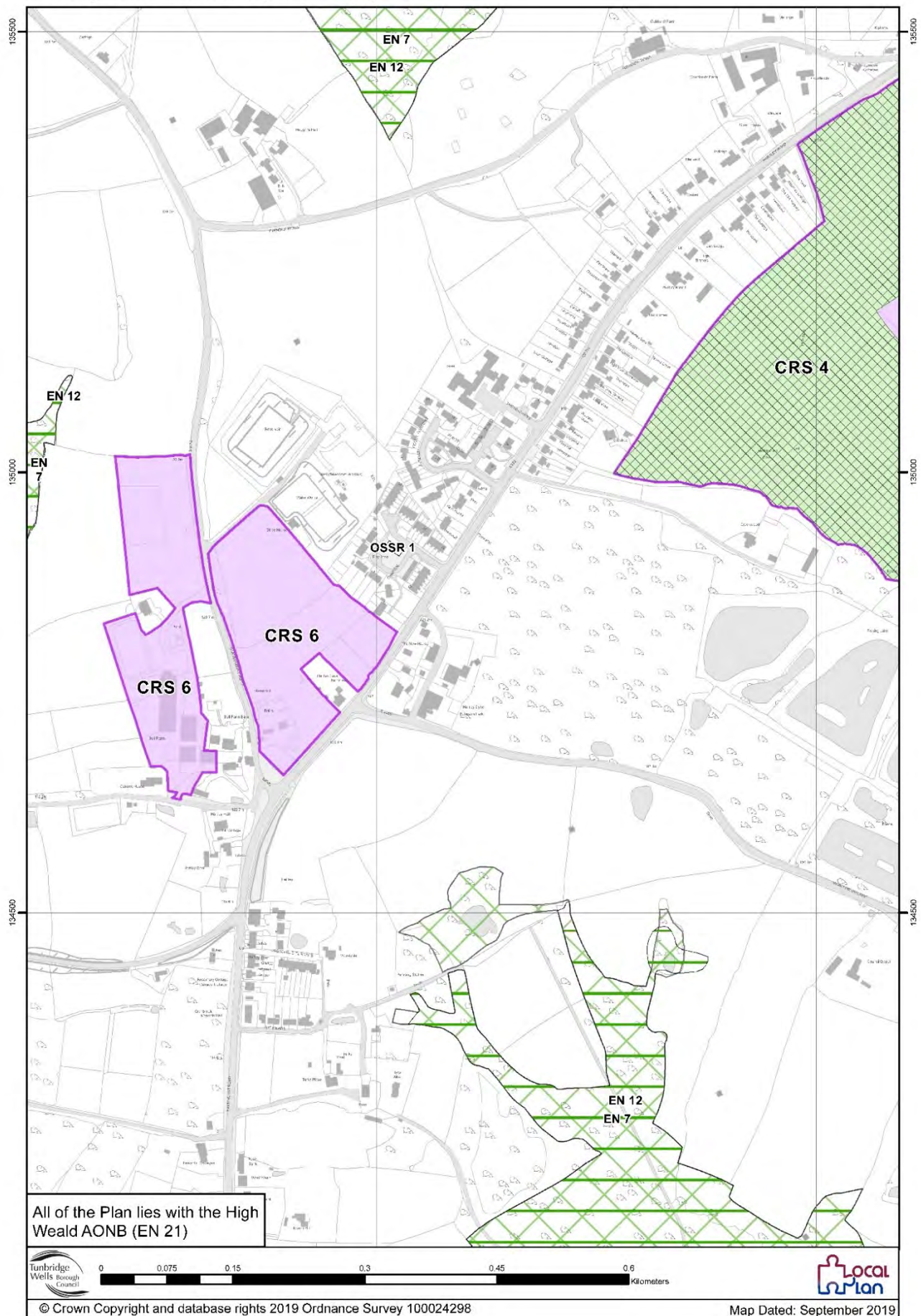
Cranbrook Town Centre Draft Policies Map - Inset Map 10



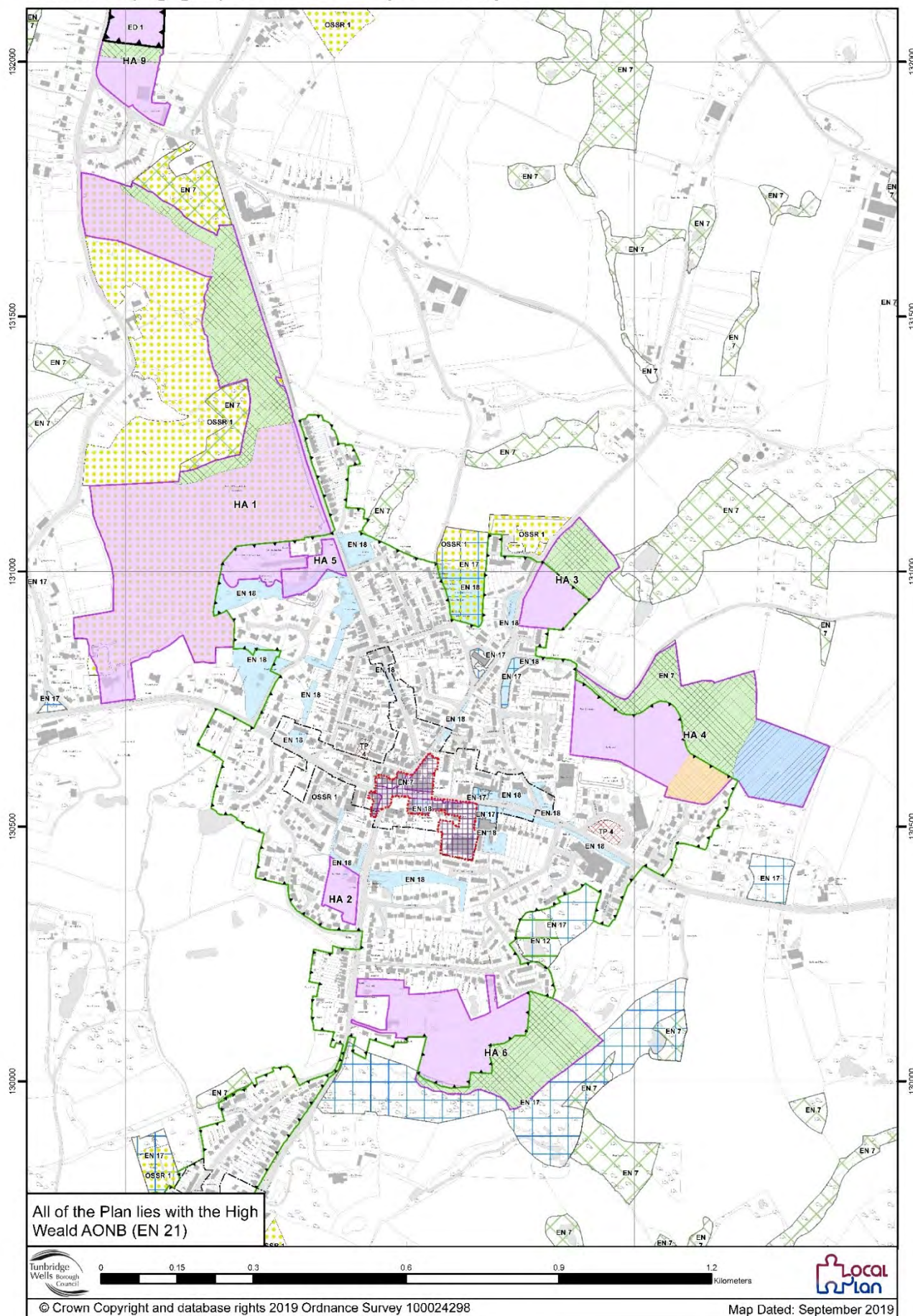
Sissinghurst Draft Policies Map - Inset Map 11



Hartley Draft Policies Map - Inset Map 12



Hawkhurst (Highgate) Draft Policies Map - Inset Map 13



All of the Plan lies with the High Weald AONB (EN 21)

Tunbridge Wells Borough Council

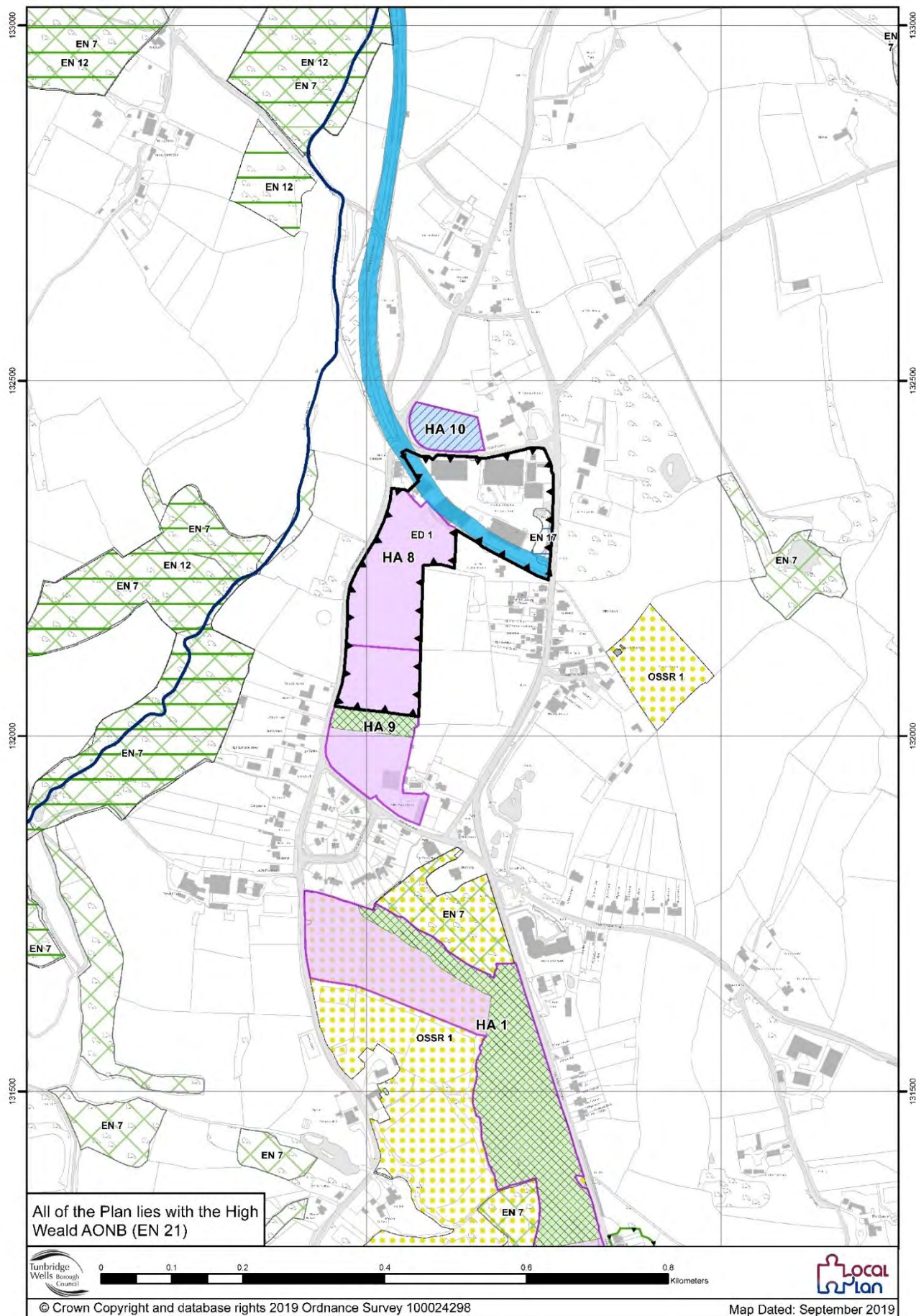
0 0.125 0.25 0.5 0.75 1 Kilometers

© Crown Copyright and database rights 2019 Ordnance Survey 100024298

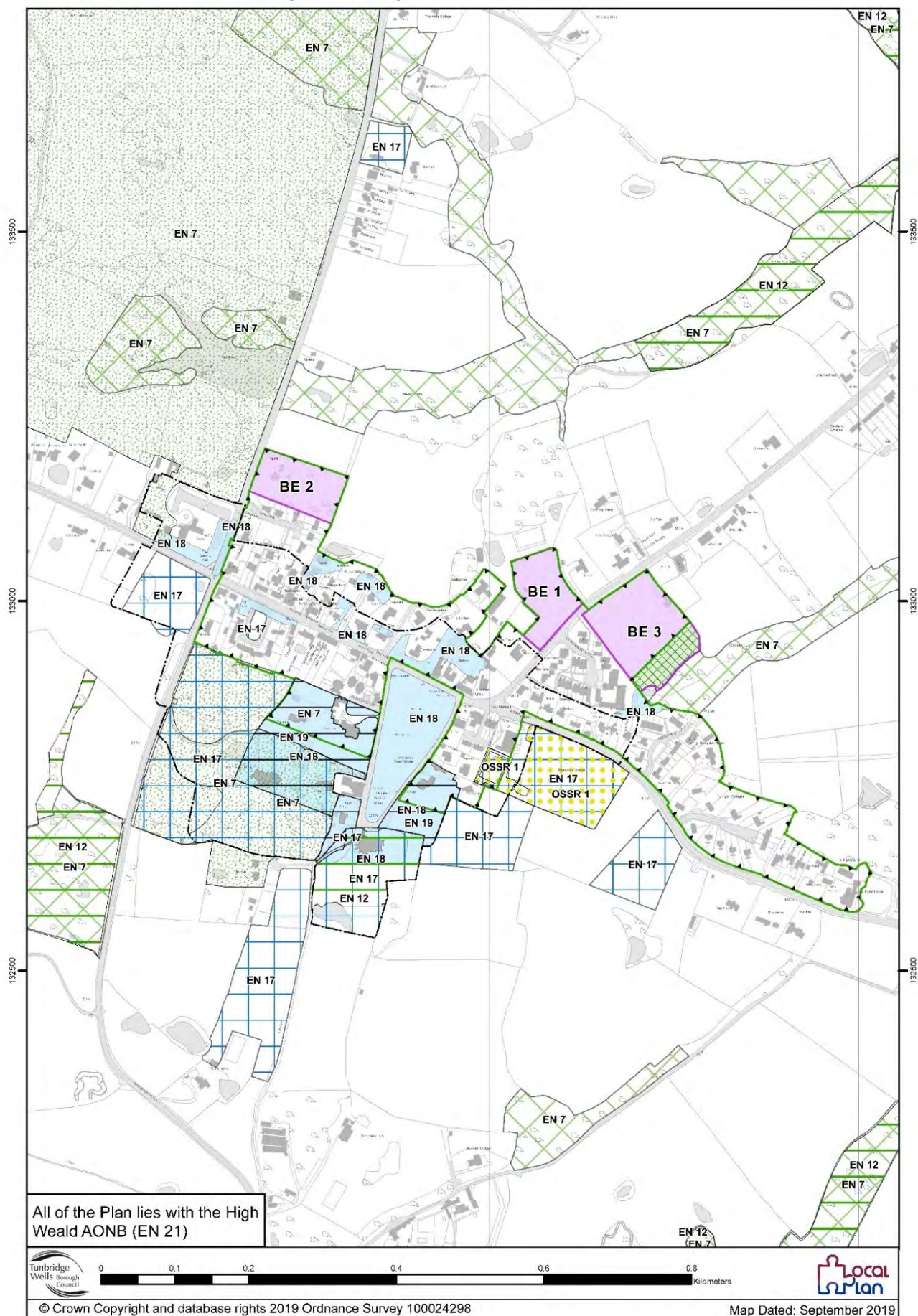
Map Dated: September 2019

localplan

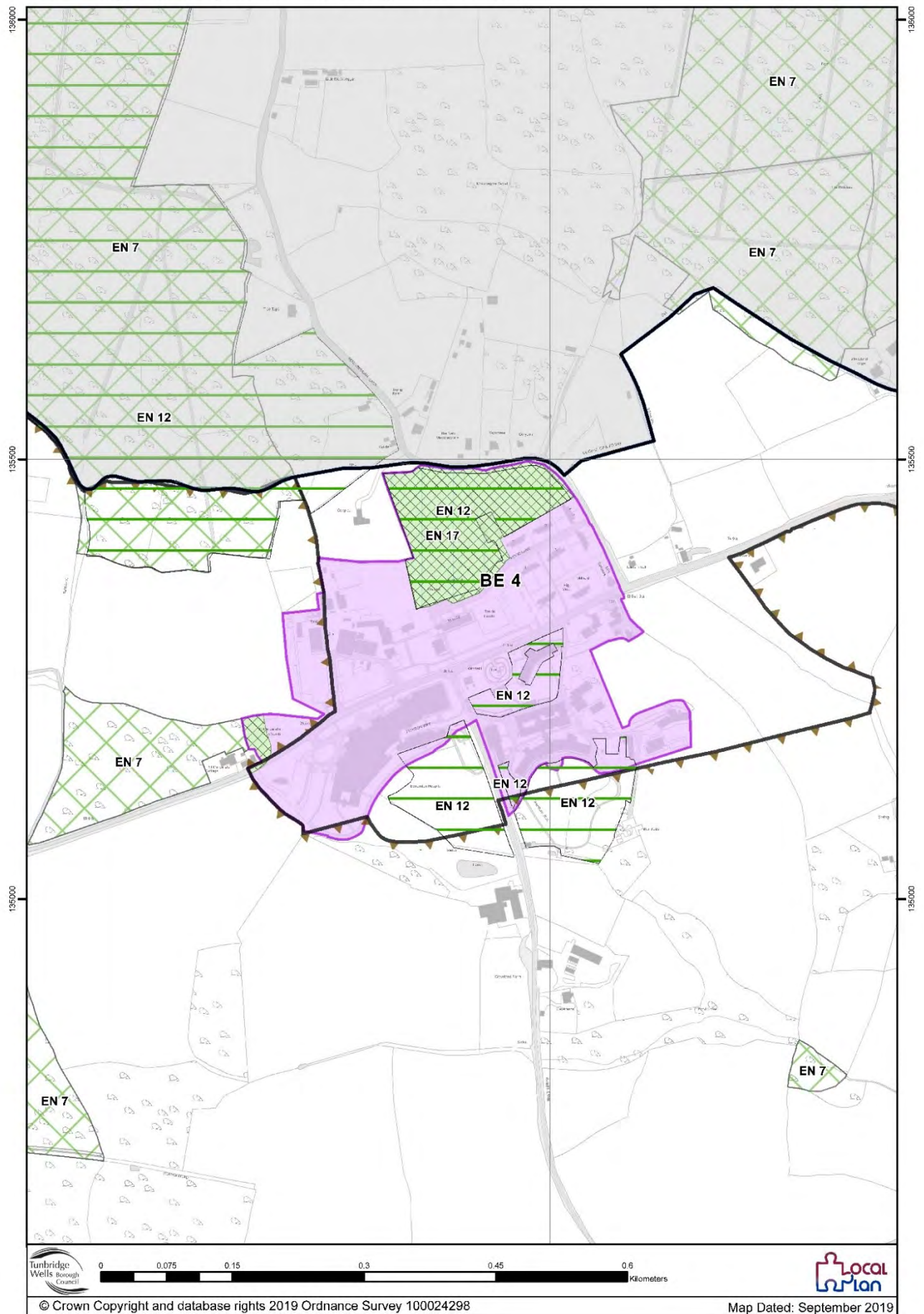
Gills Green Draft Policies Map - Inset Map 15



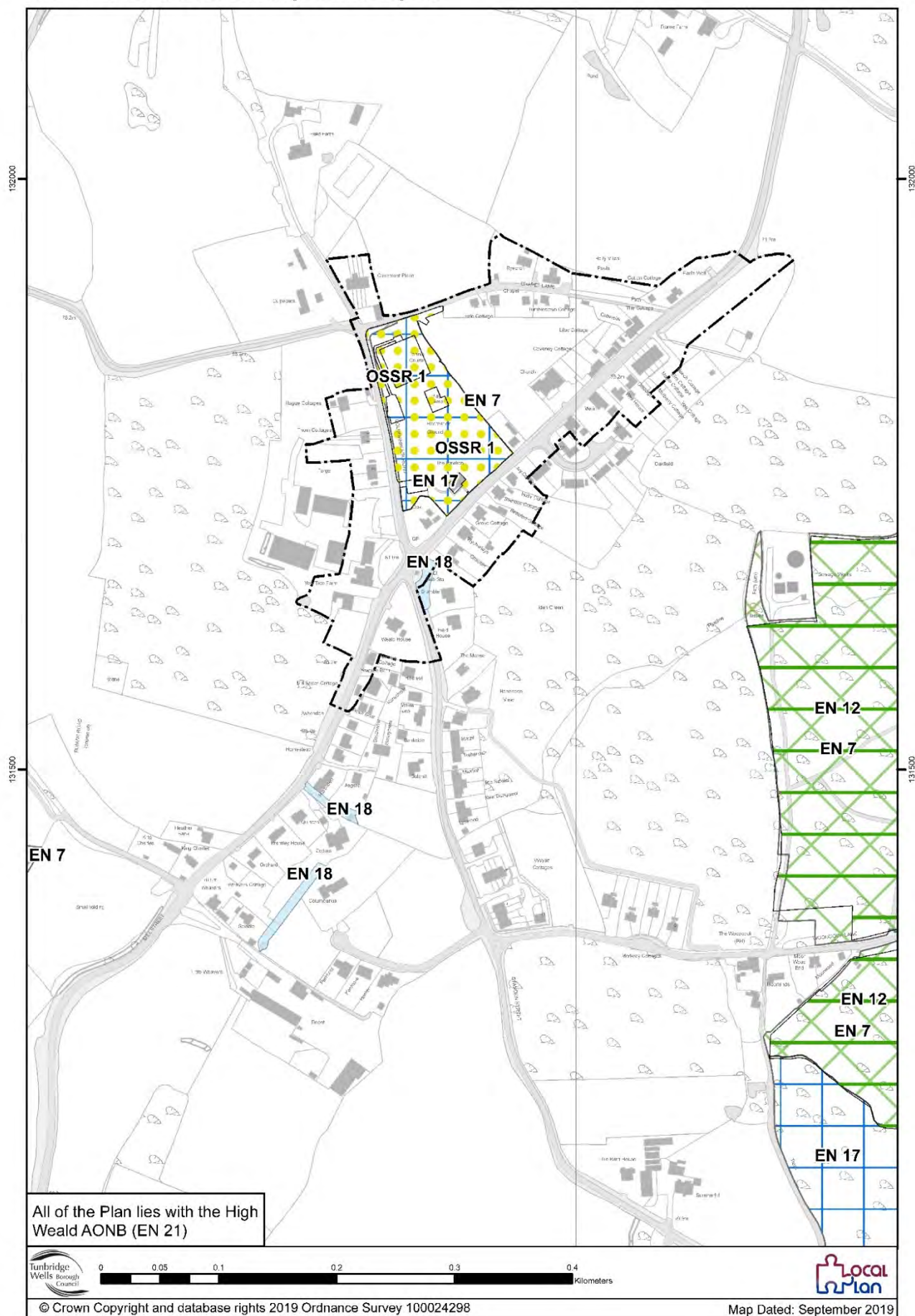
Benenden Draft Policies Map - Inset Map 16



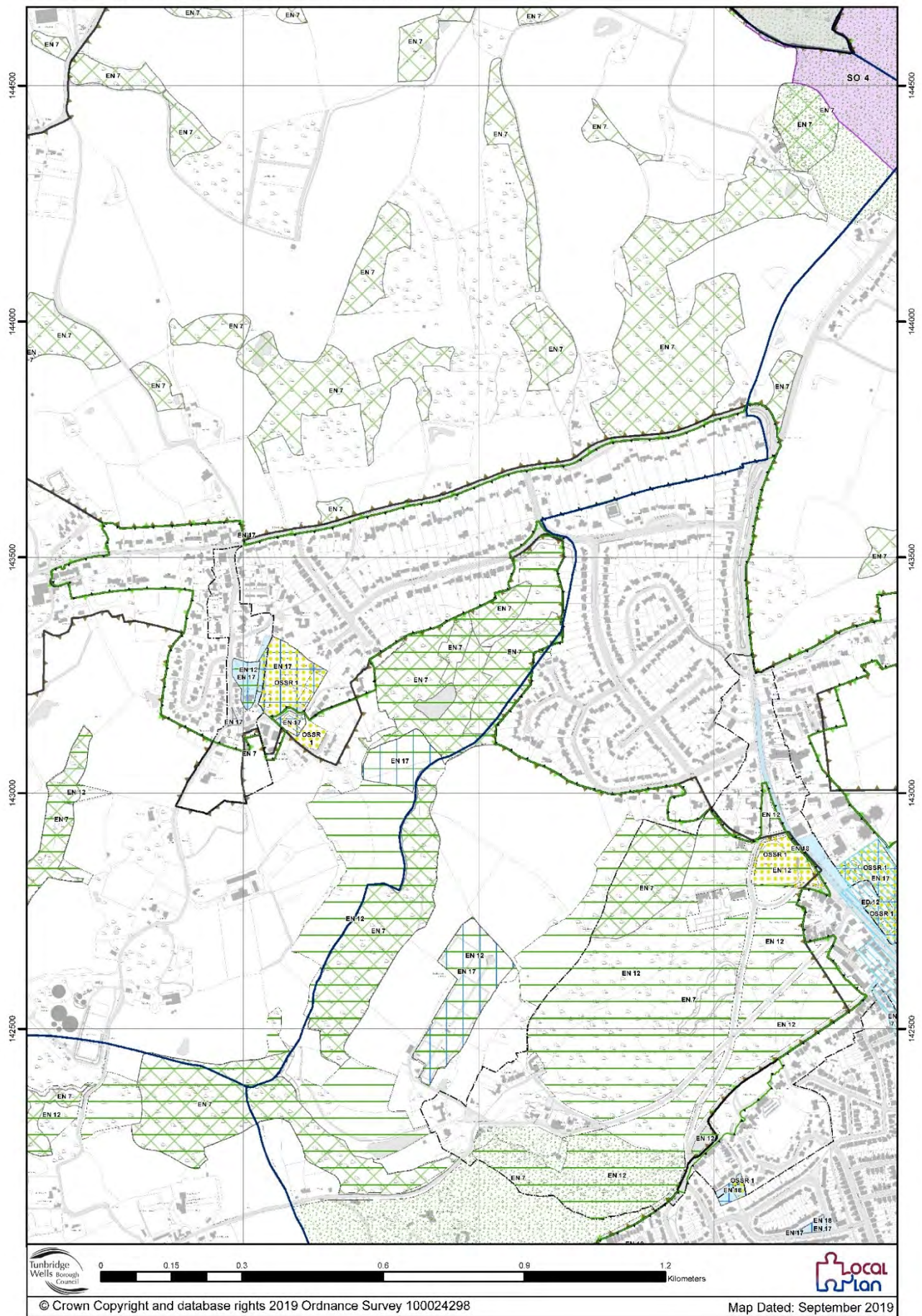
East End (Benenden) Draft Policies Map - Inset Map 17



Iden Green Draft Policies Map - Inset Map 18



Bidborough Draft Policies Map - Inset Map 19

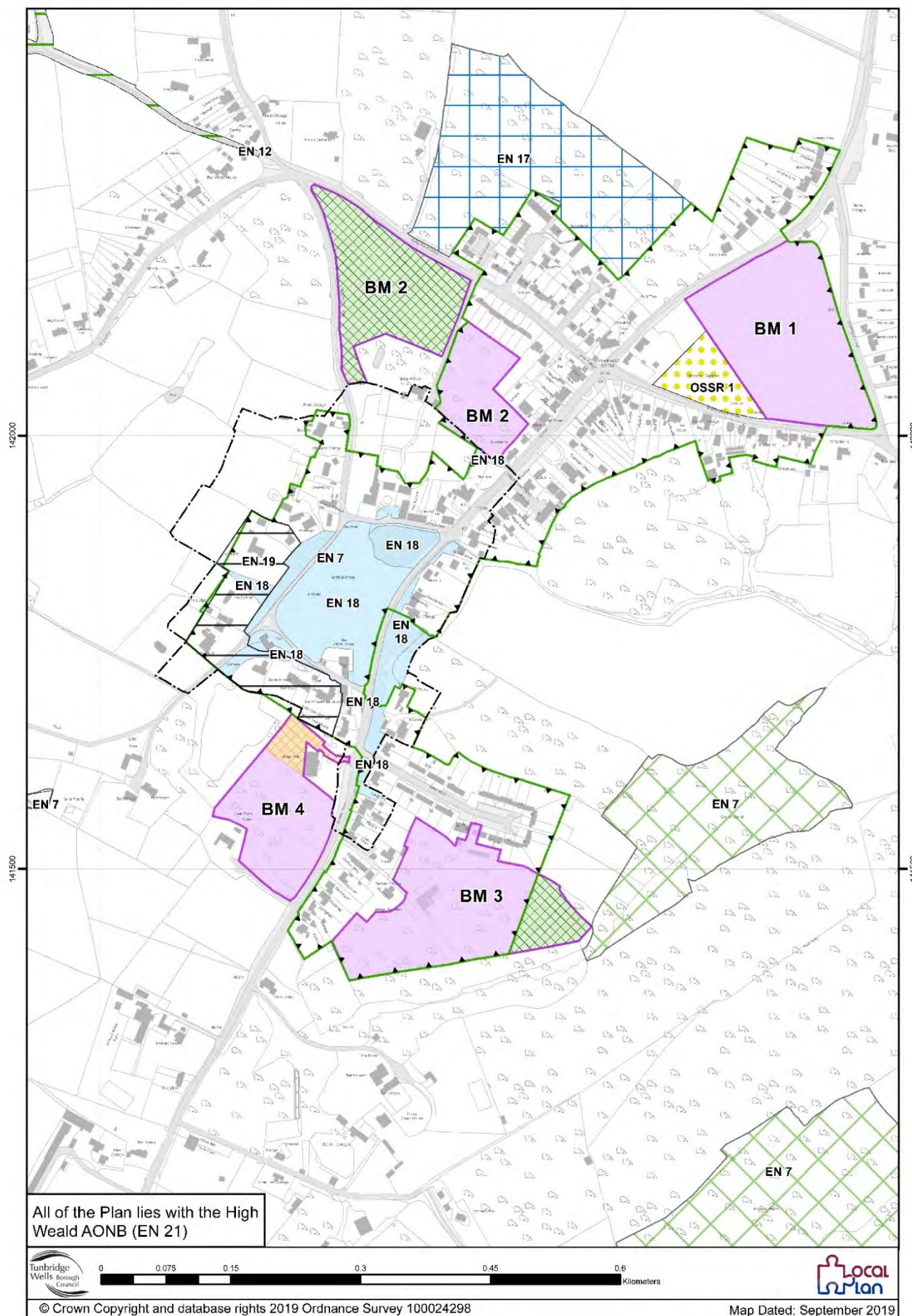


This map displays the planning areas of Tunbridge Wells, categorized by color and pattern. The areas include:

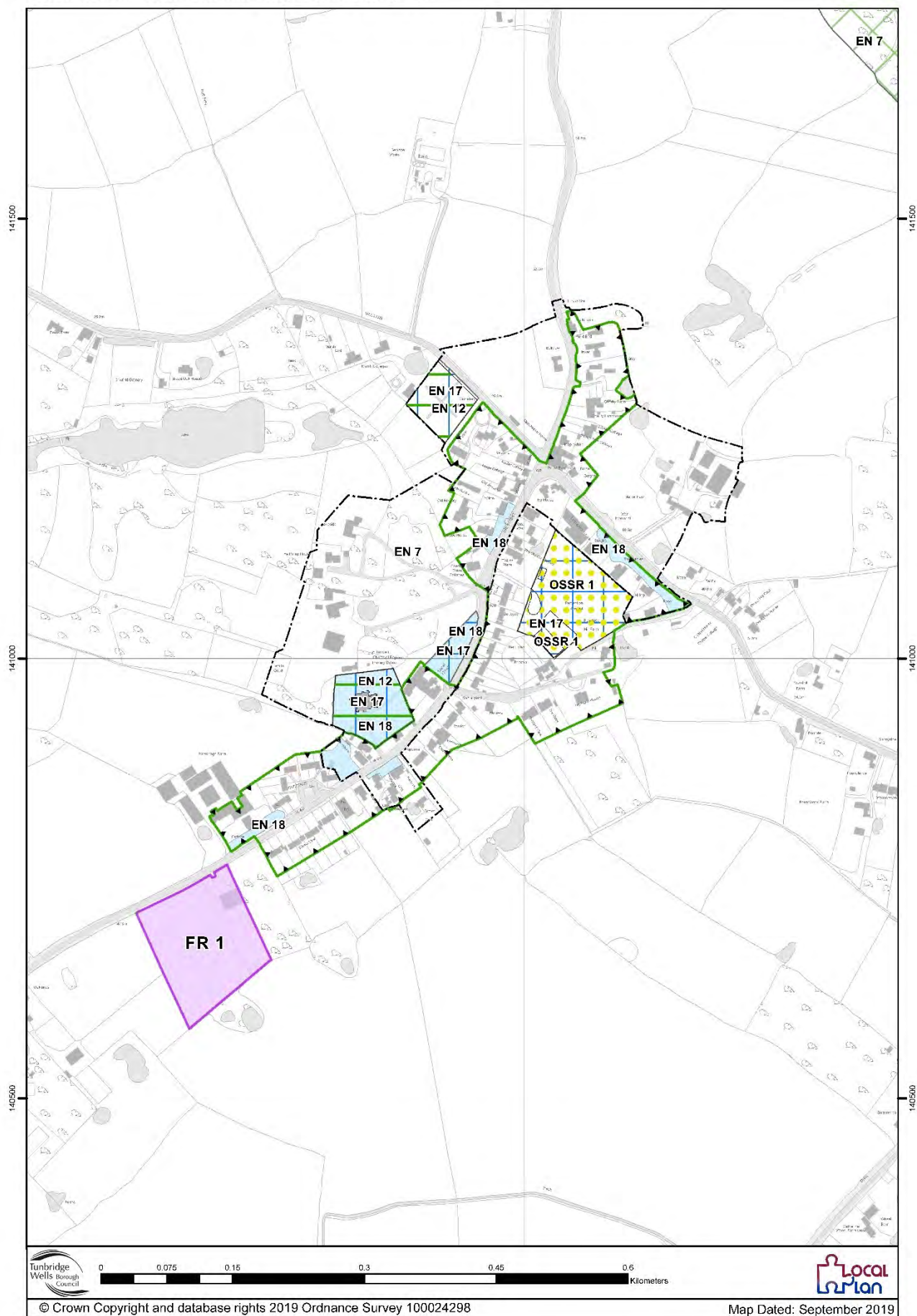
- EN 7:** Yellow checkered pattern, covering the northern and central parts of the map.
- EN 17:** Blue checkered pattern, located in the central-western part.
- EN 18:** Green checkered pattern, covering the eastern part of the map.
- EN 12:** Blue checkered pattern, located in the southern part.
- OSSR 1:** Yellow checkered pattern, located in the central and southern parts.
- TP 4:** A small area in the central-eastern part.

The map also shows a scale bar from 0 to 0.8 kilometers and a north arrow. The map is dated September 2019.

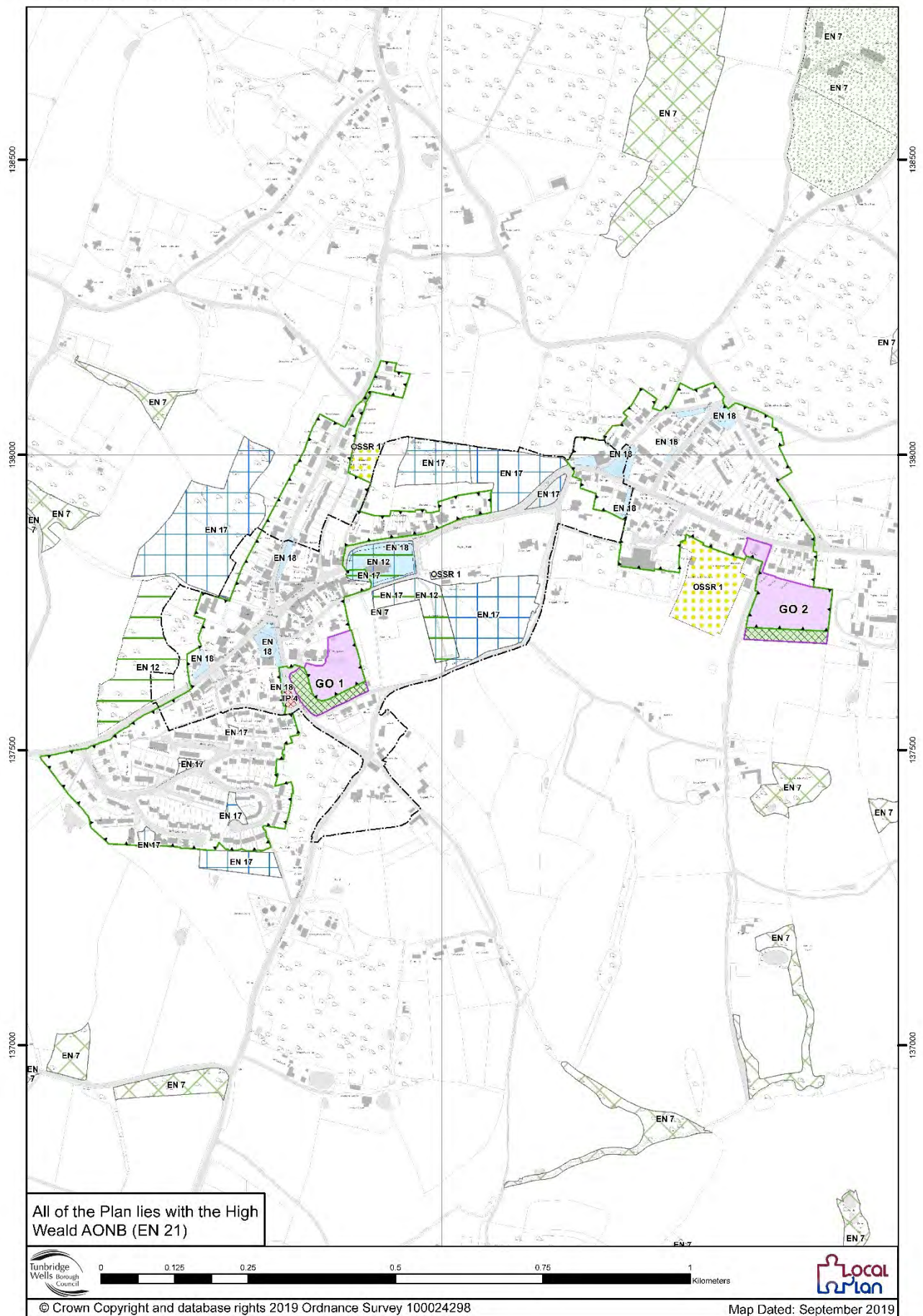
Matfield Draft Policies Map - Inset Map 21



Frittenden Draft Policies Map - Inset Map 22



Goudhurst Draft Policies Map - Inset Map 23



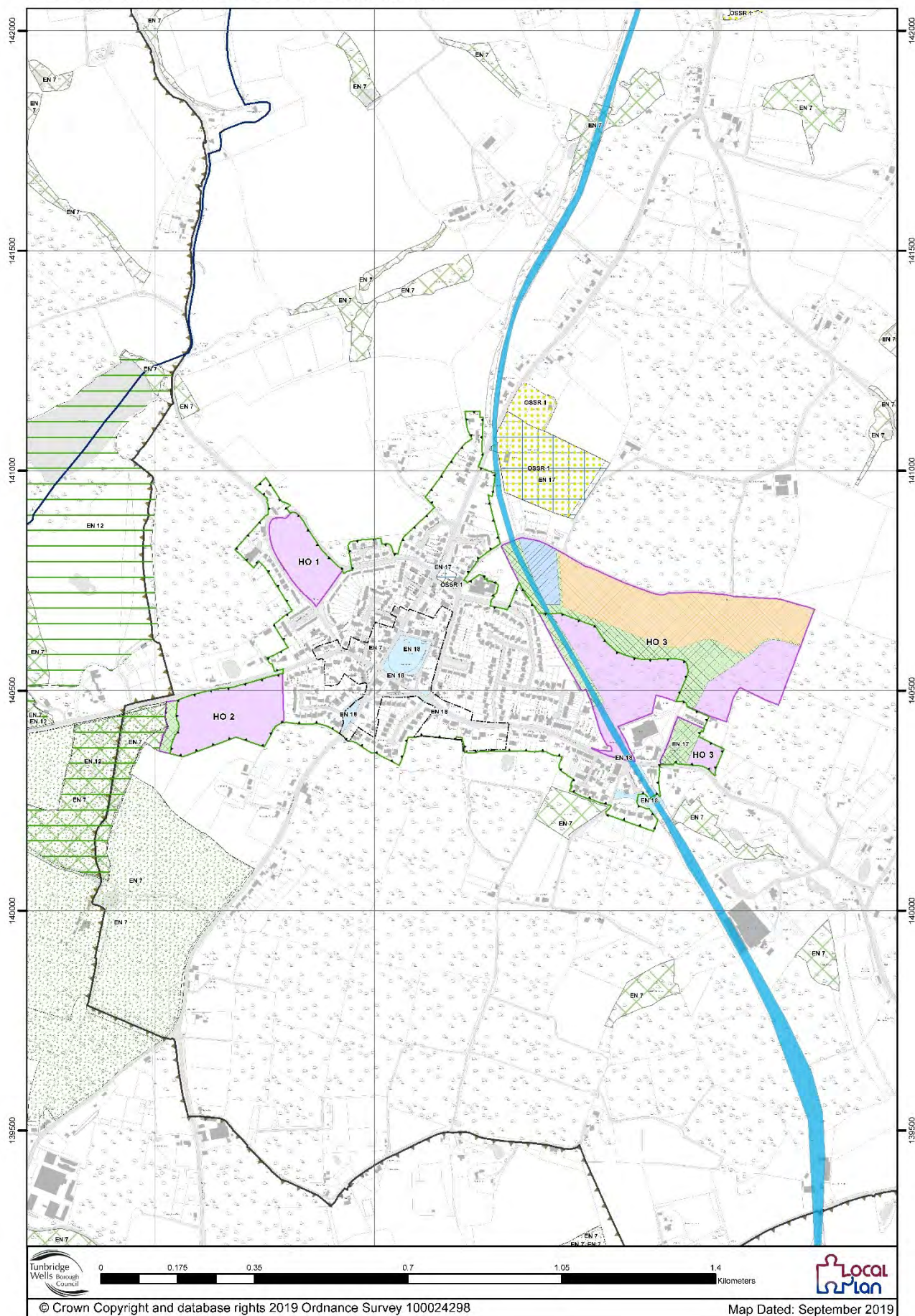
All of the Plan lies with the High Weald AONB (EN 21)

0 0.1 0.2 0.4 0.6 0.8 kilometers

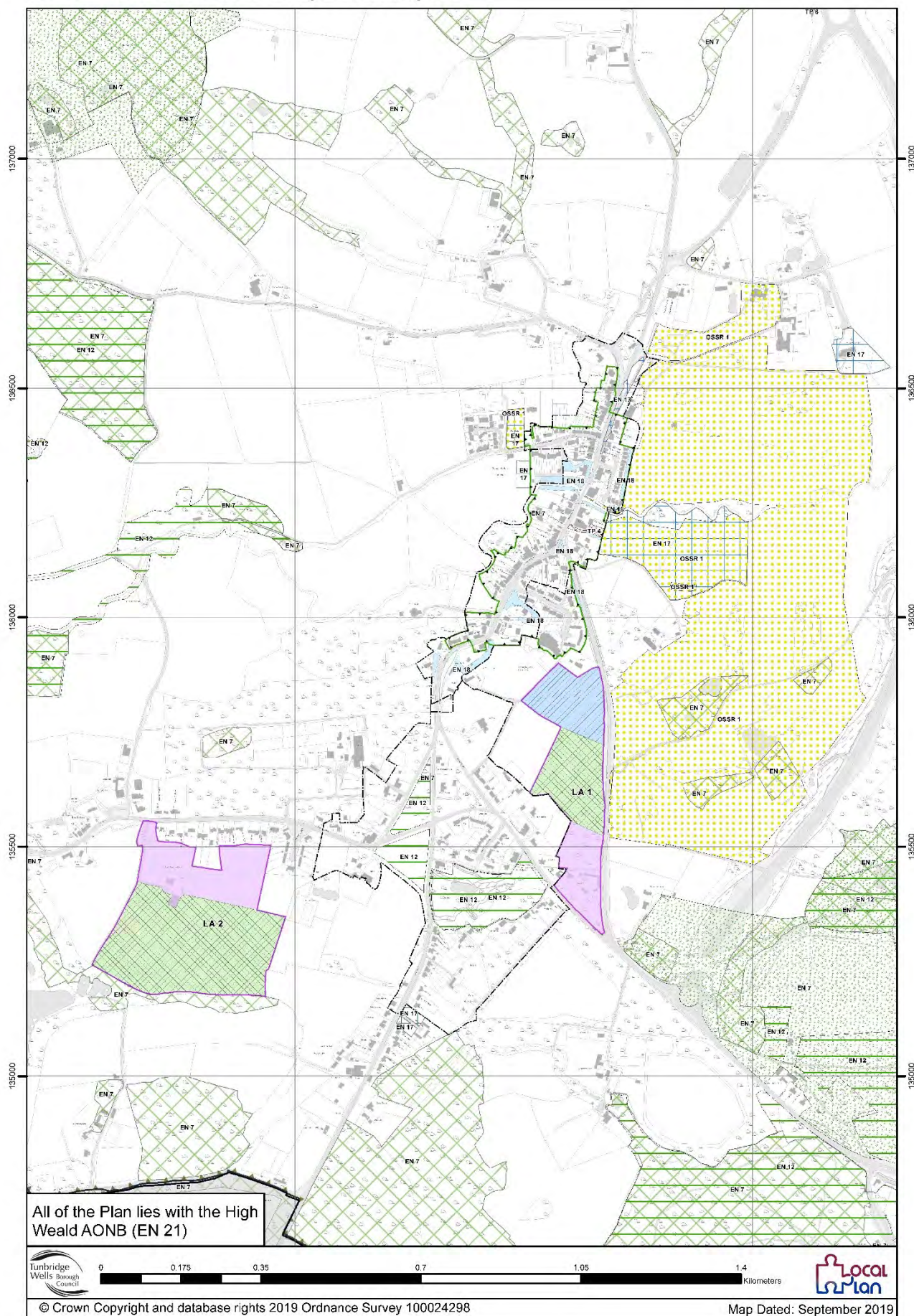
Local Plan

© Crown Copyright and database rights 2019 Ordnance Survey 100024298 Map Dated: September 2019

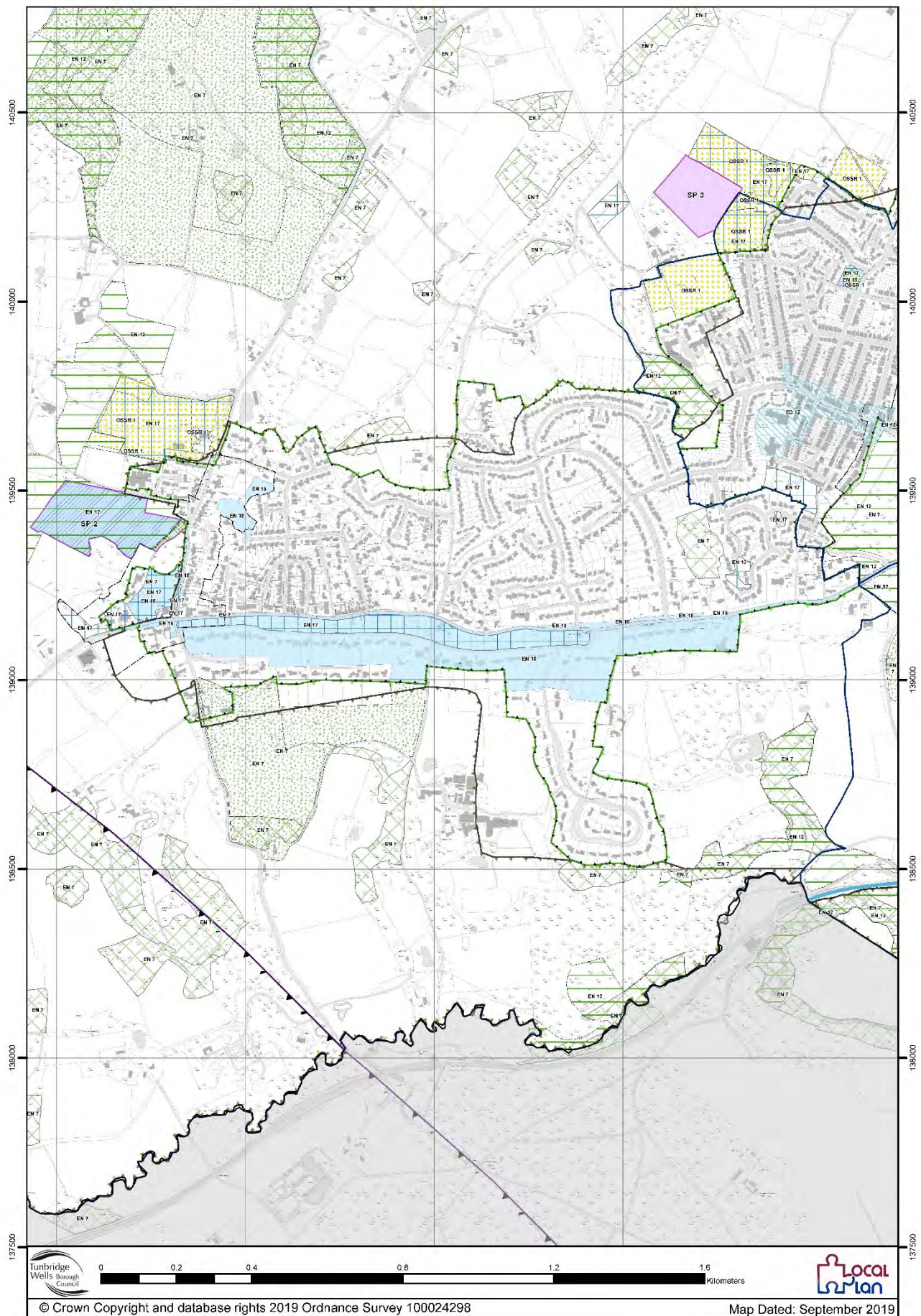
Horsmonden Draft Policies Map - Inset Map 25



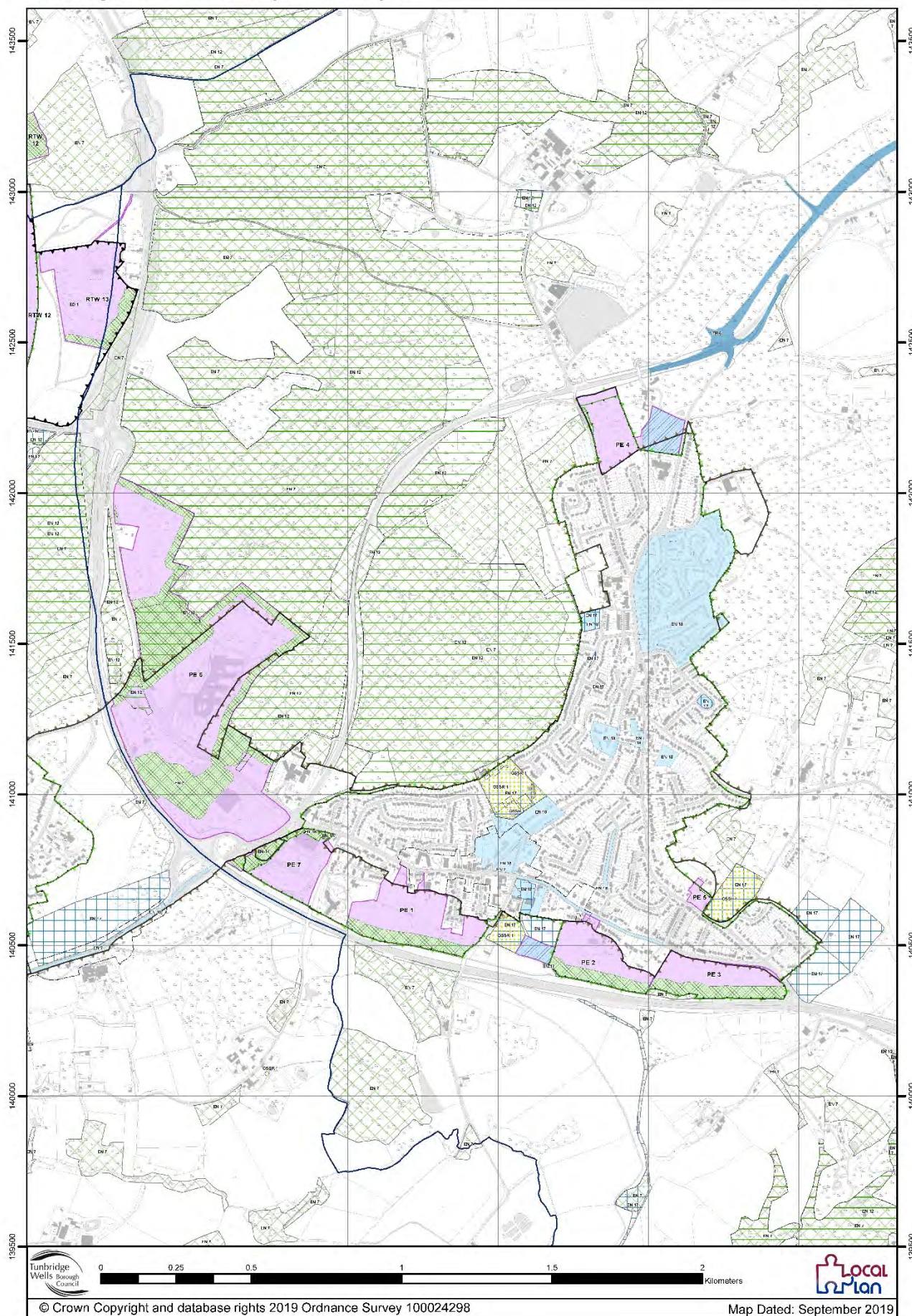
Lamberhurst Draft Policies Map - Inset Map 26



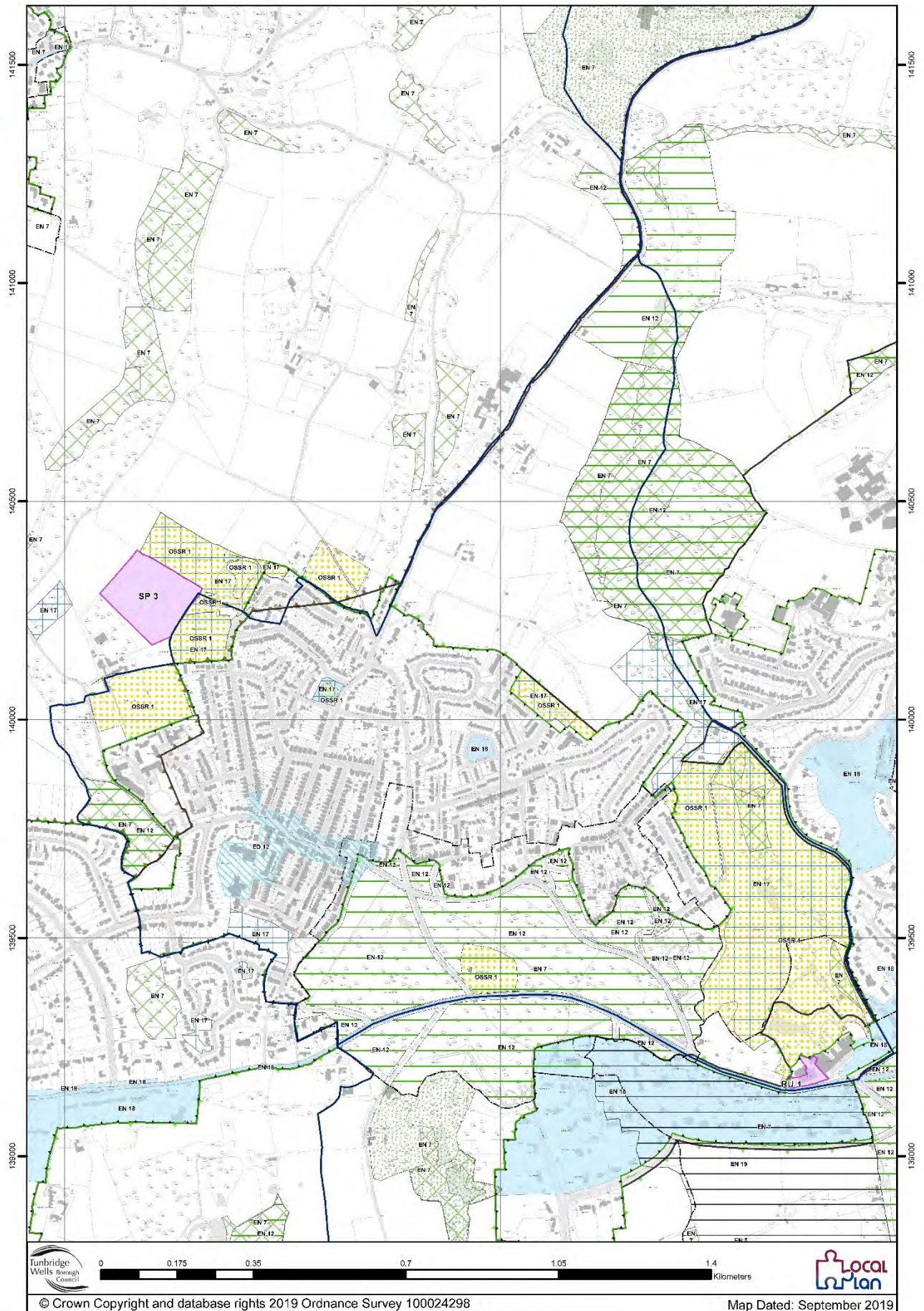
Langton Green Draft Policies Map - Inset Map 27



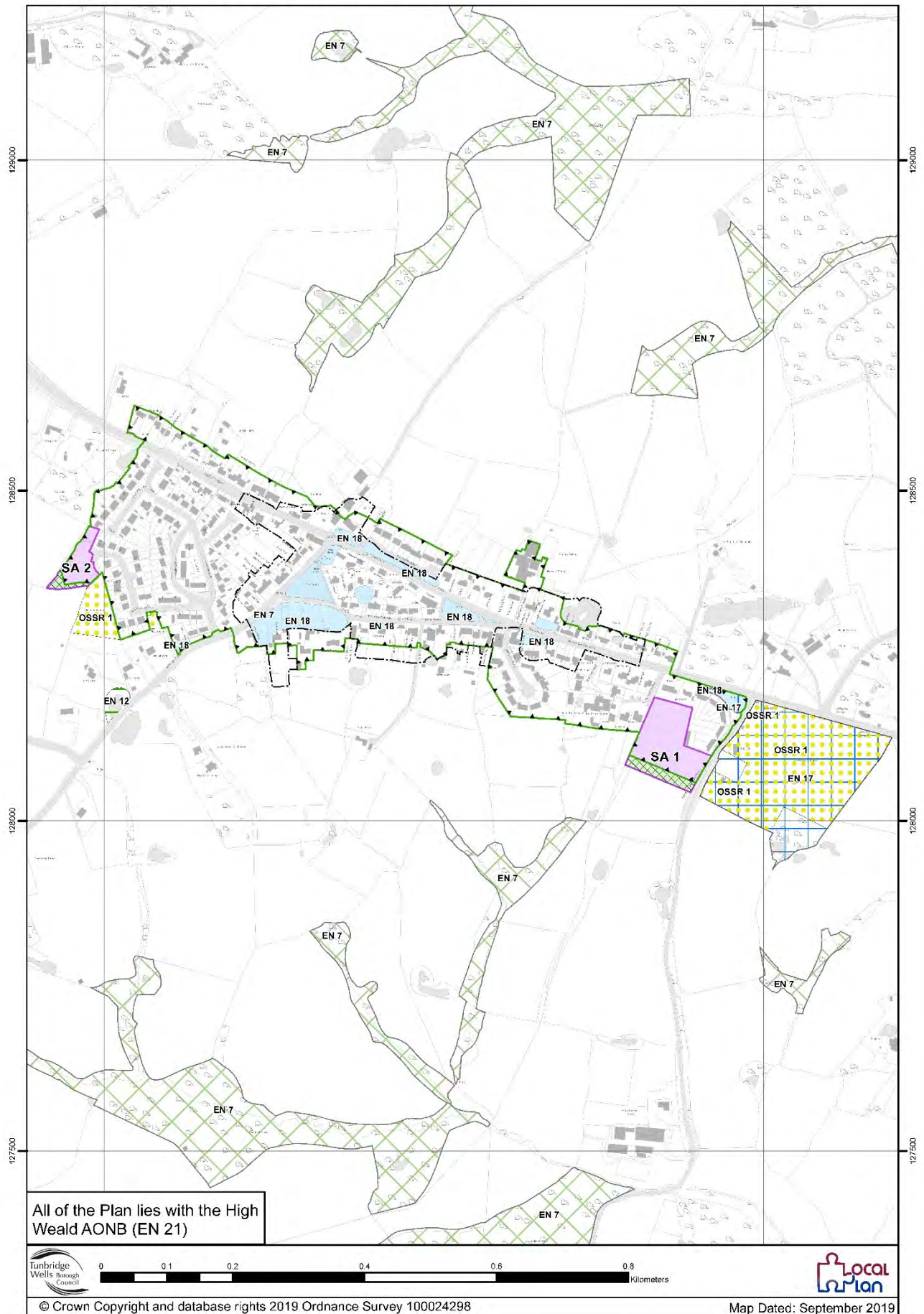
Pembury Draft Policies Map - Inset Map 28



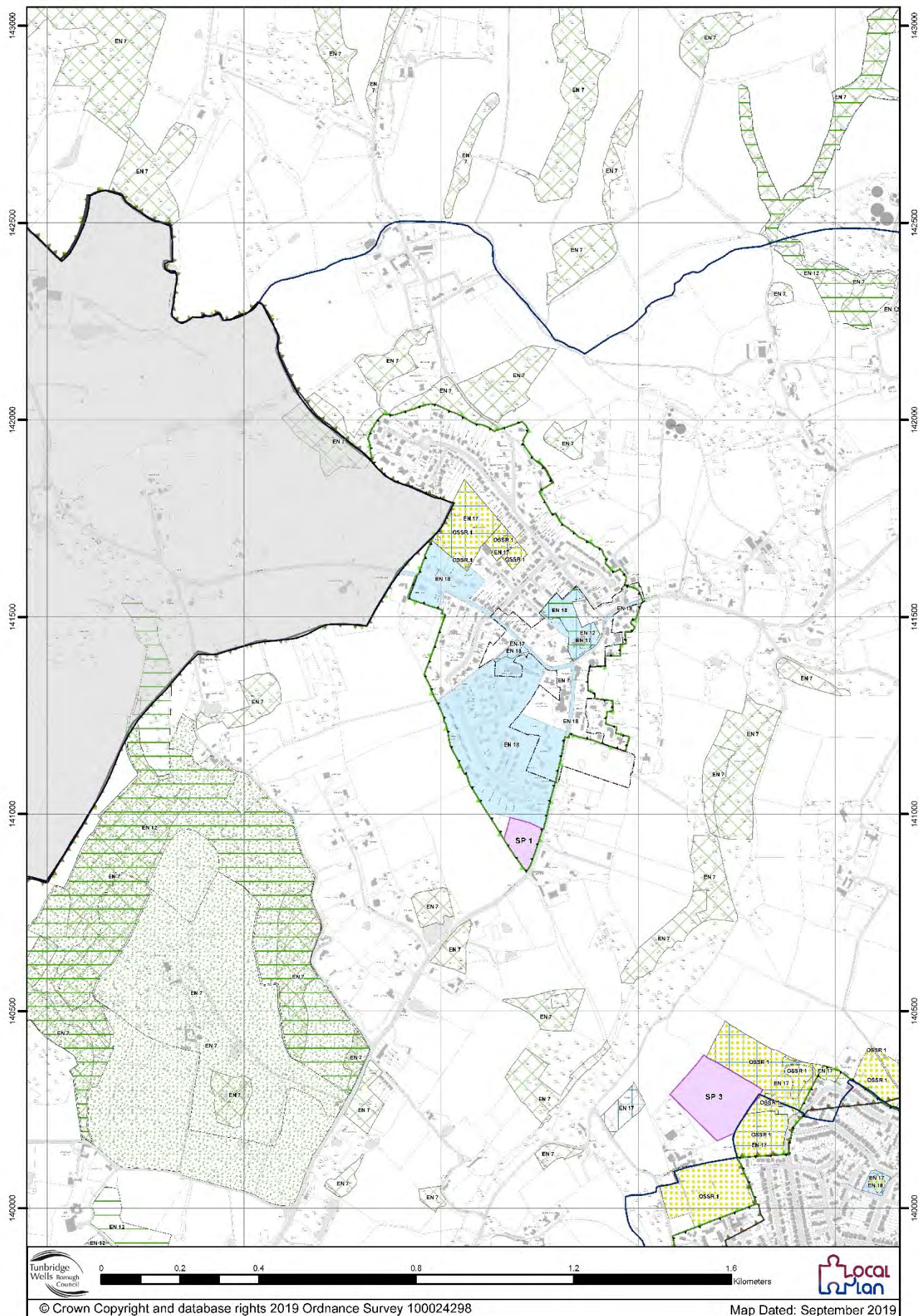
Rusthall Draft Policies Map - Inset Map 29



Sandhurst Draft Policies Map - Inset Map 30



Speldhurst Draft Policies Map - Inset Map 31



**If you require this document in another format,
please contact:**

Planning Policy

Planning Services

Tunbridge Wells Borough Council

Town Hall

Royal Tunbridge Wells

Kent TN1 1RS

Telephone: 01892 5 5 4 0 5 6