

Fig. 6 Edward Hasted map of Tunbridge Wells 1778

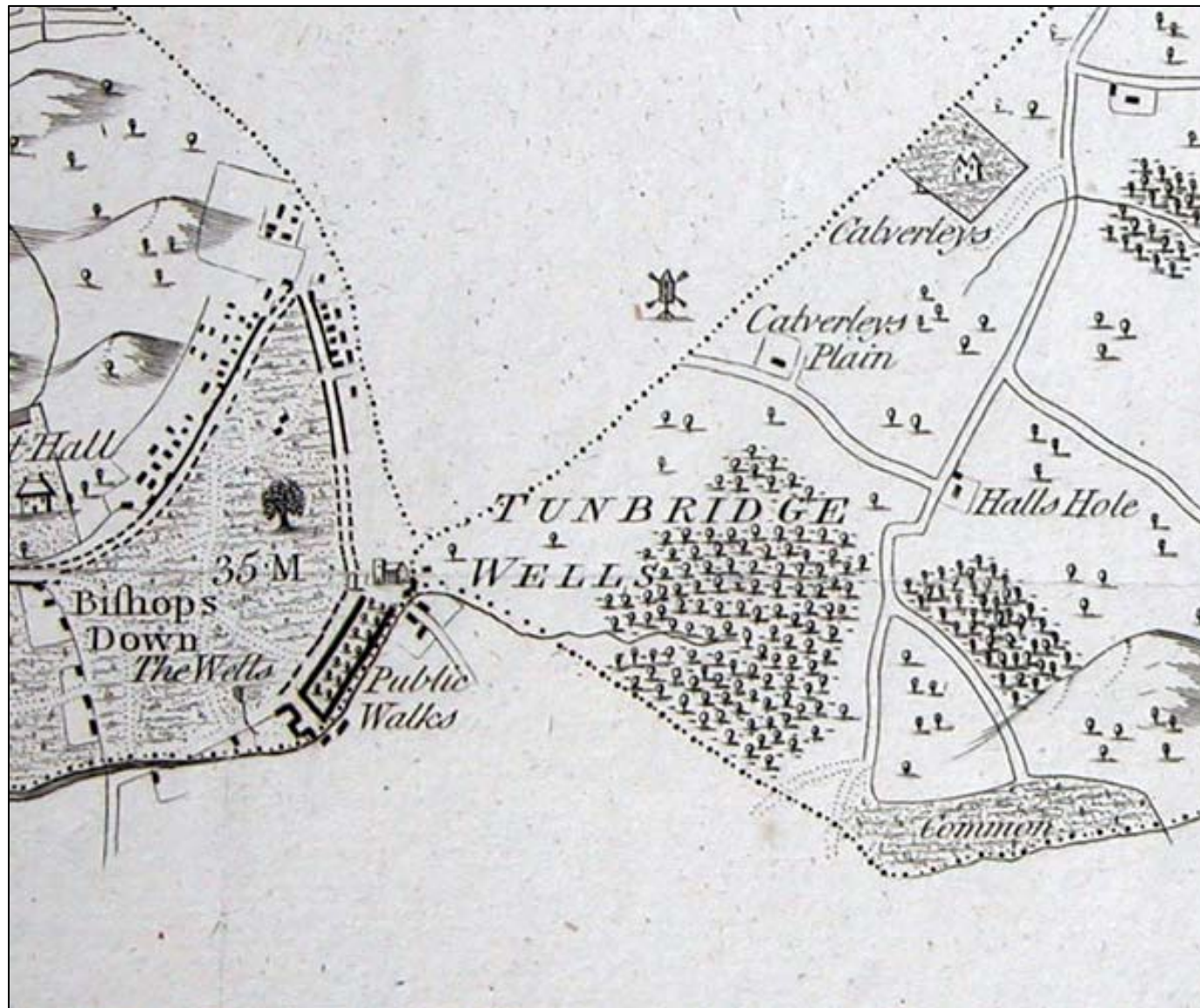


Fig. 7 Charles Greenwood, *Map of the County of Kent* 1821

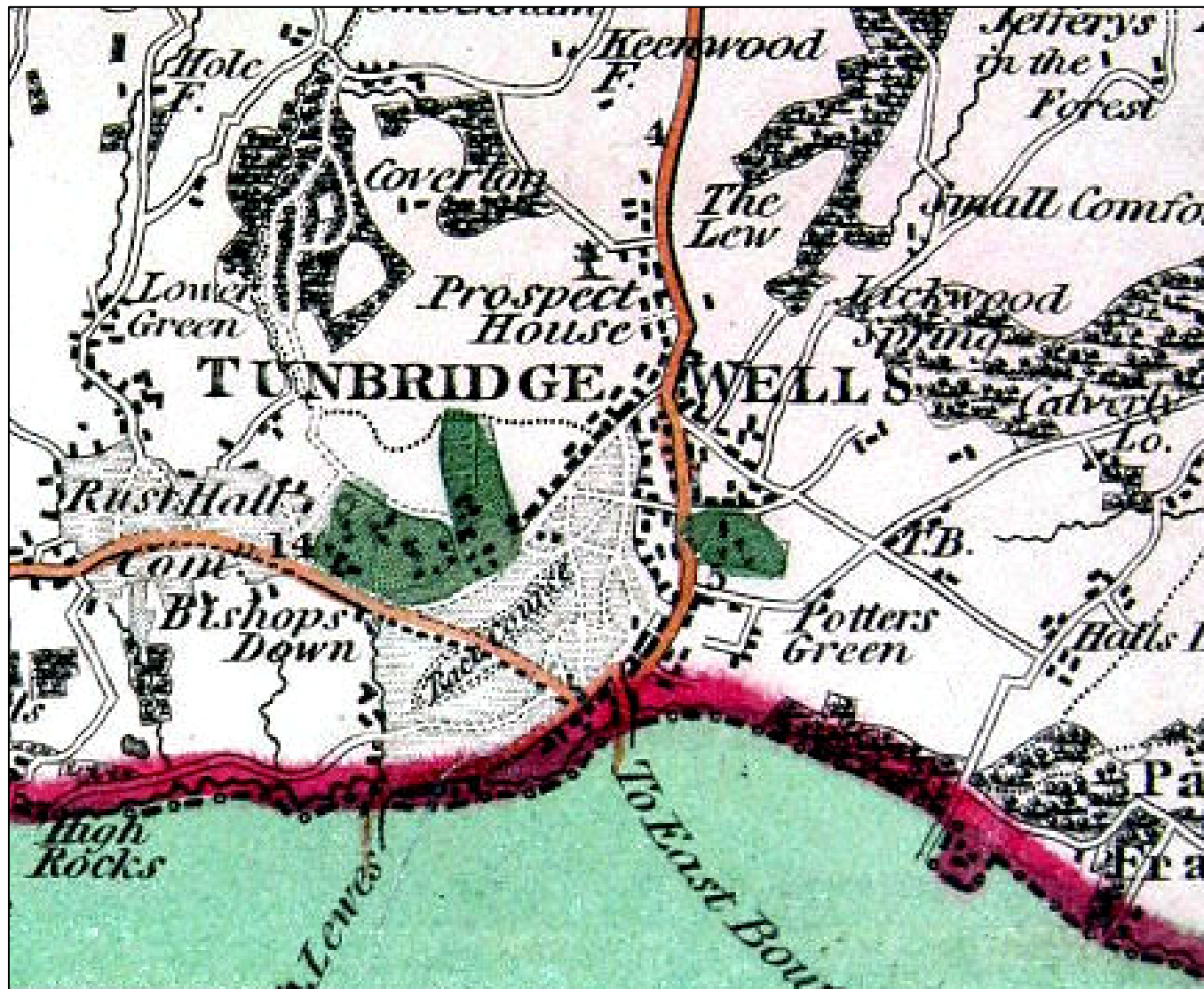
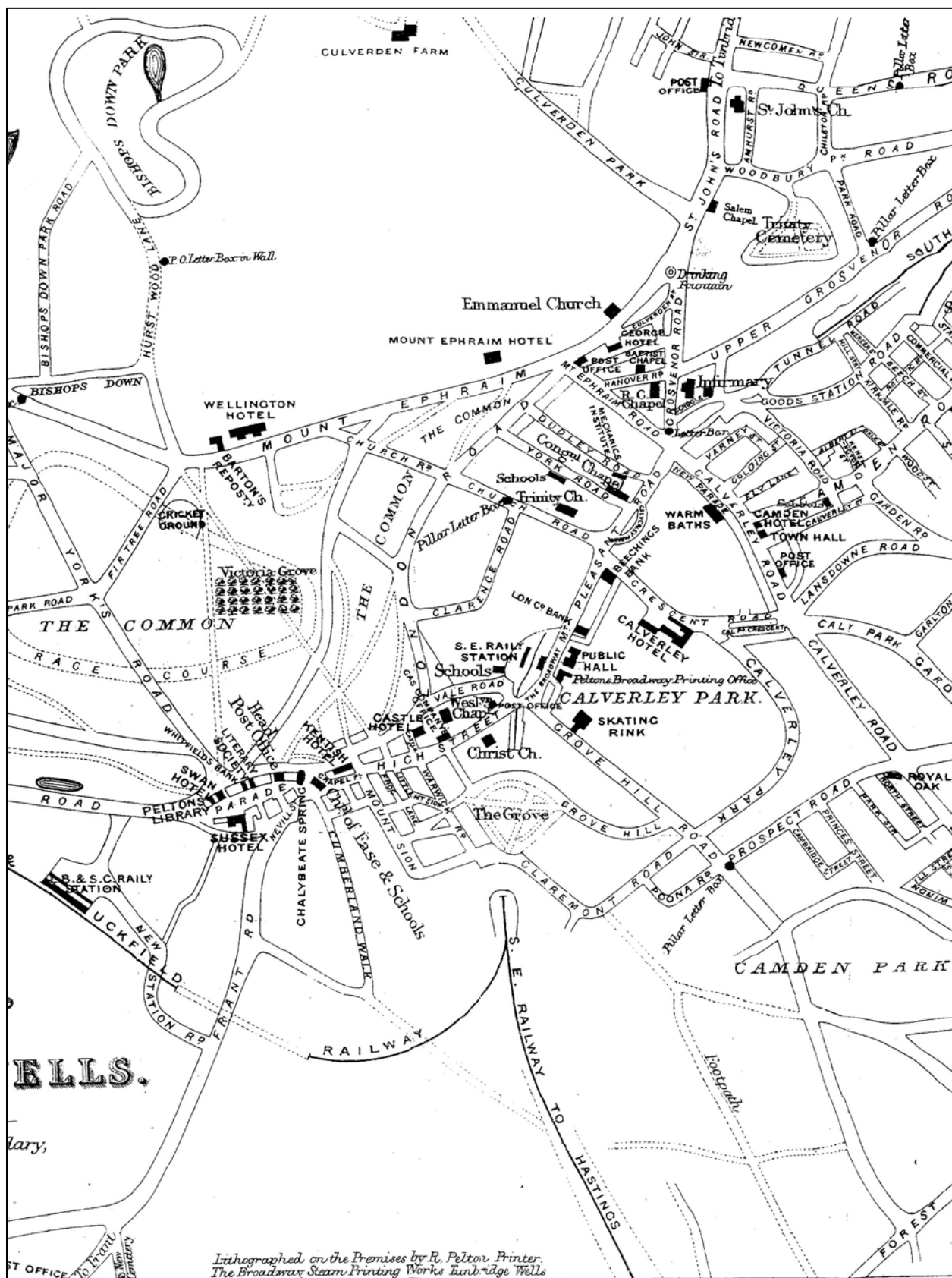


Fig. 8 Tithe map 1840



Kent Compendium of Historic Parks & Gardens – 2009 review of Tunbridge Wells Borough

Fig. 9 Pelton's New Map of Tunbridge Wells (1876) in Pelton's Shilling Guide



Kent Compendium of Historic Parks & Gardens – 2009 review of Tunbridge Wells Borough

Fig. 10 Tunbridge Wells Improvement Plan 1889

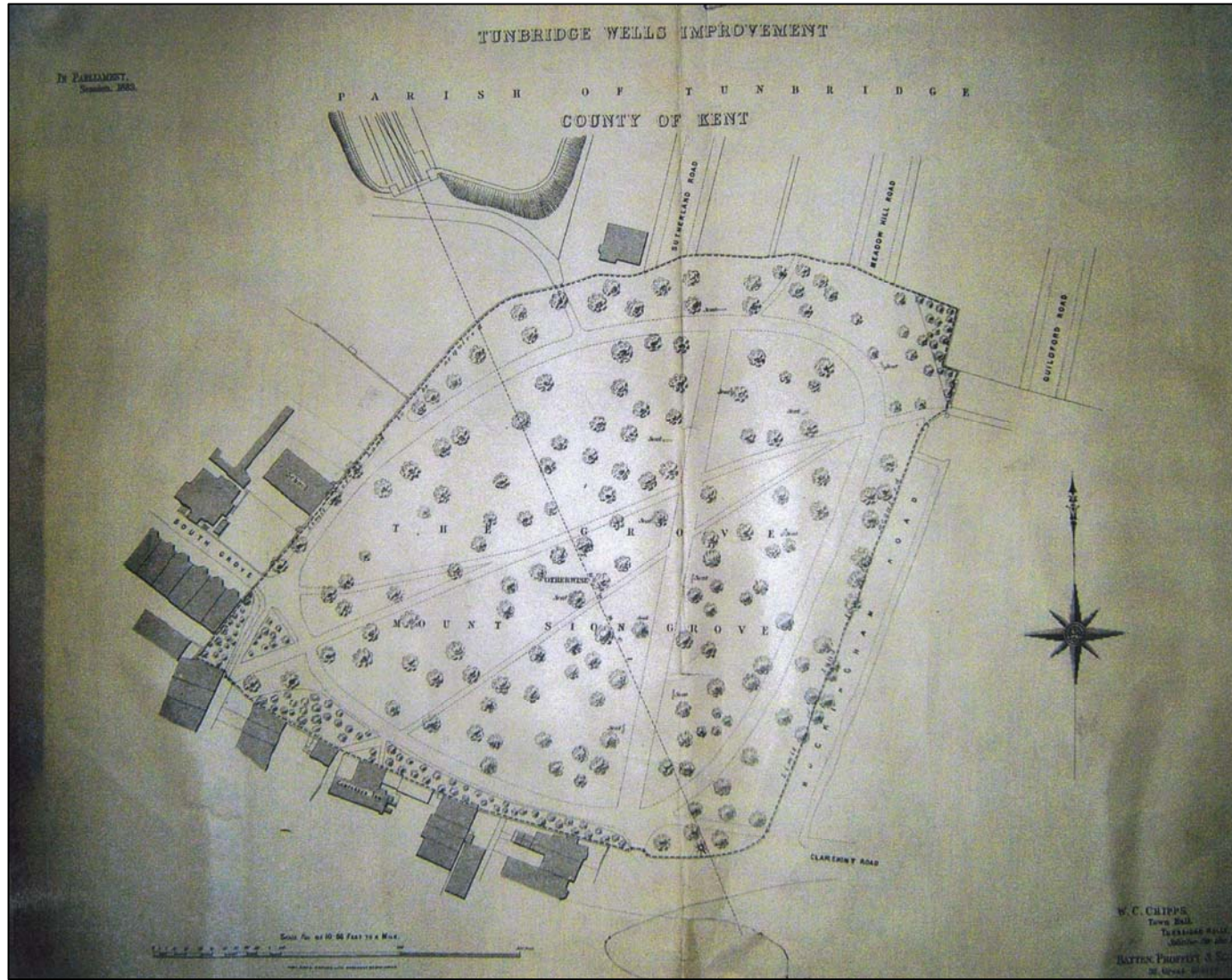


Fig. 11 Ordnance Survey 2nd edn 6" map (1897)



Fig. 12 Ordnance Survey 3rd edn 25" OS map (1907).

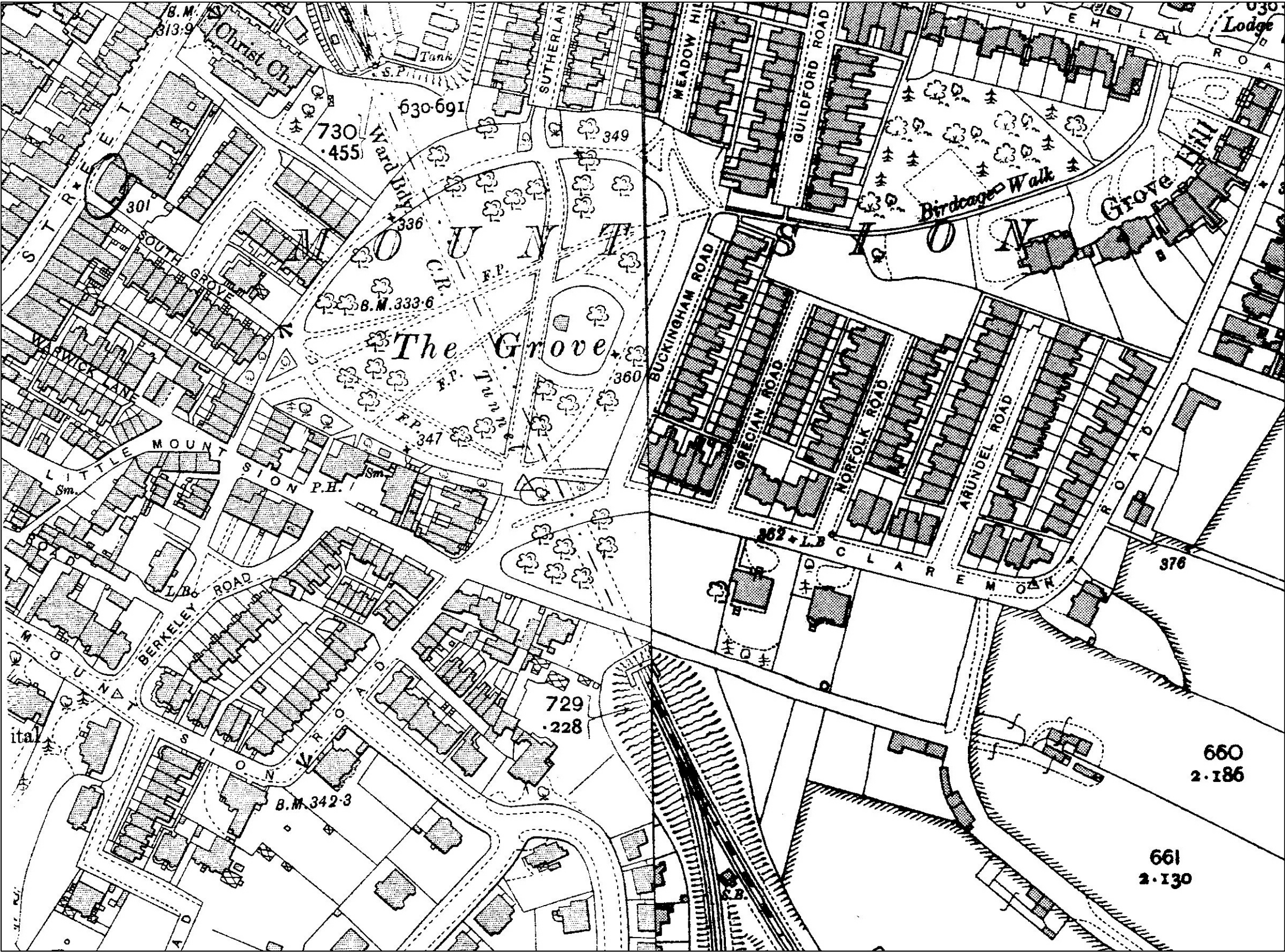


Fig. 13 Joseph Josiah Dodd, pencil drawing of 'Duchess of Kent's House, from the Grove' (c.1830)



'Duchess of Kent's House, from the Grove'.
Pencil drawing by Joseph Jossiah Dodd, c. 1830.

Kent Compendium of Historic Parks & Gardens – 2009 review of Tunbridge Wells Borough

Fig. 14 1907 b/w postcards of Mount Sion Grove

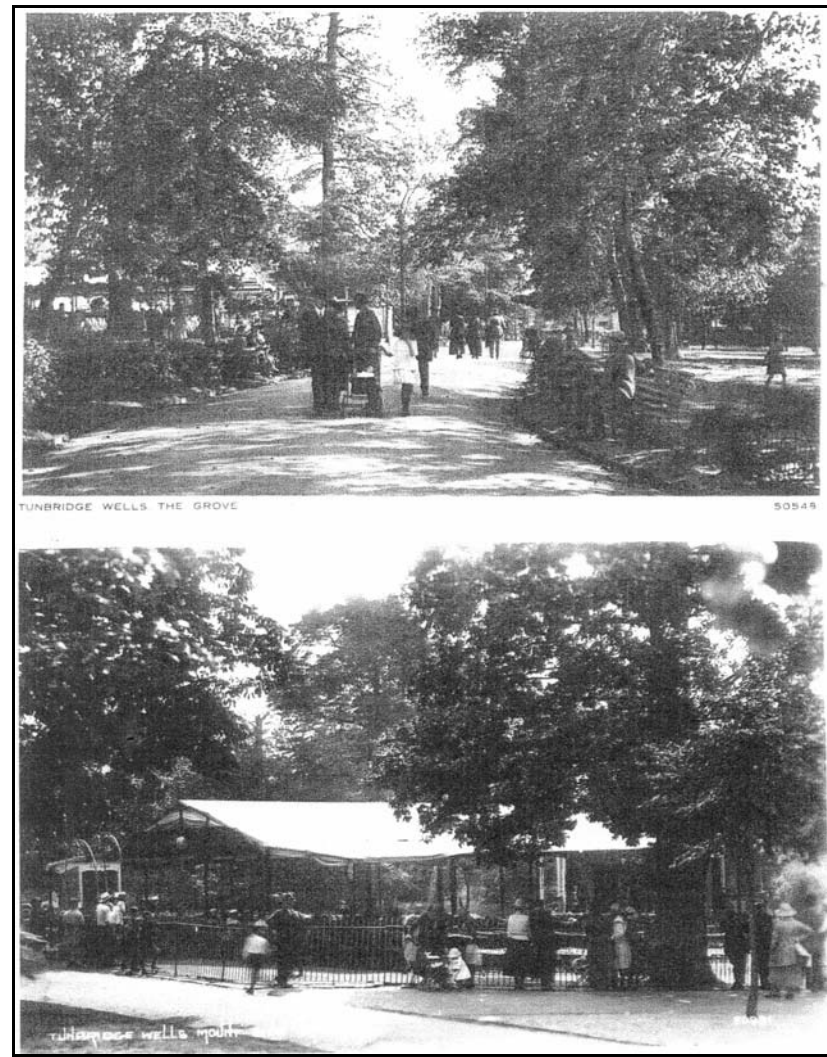
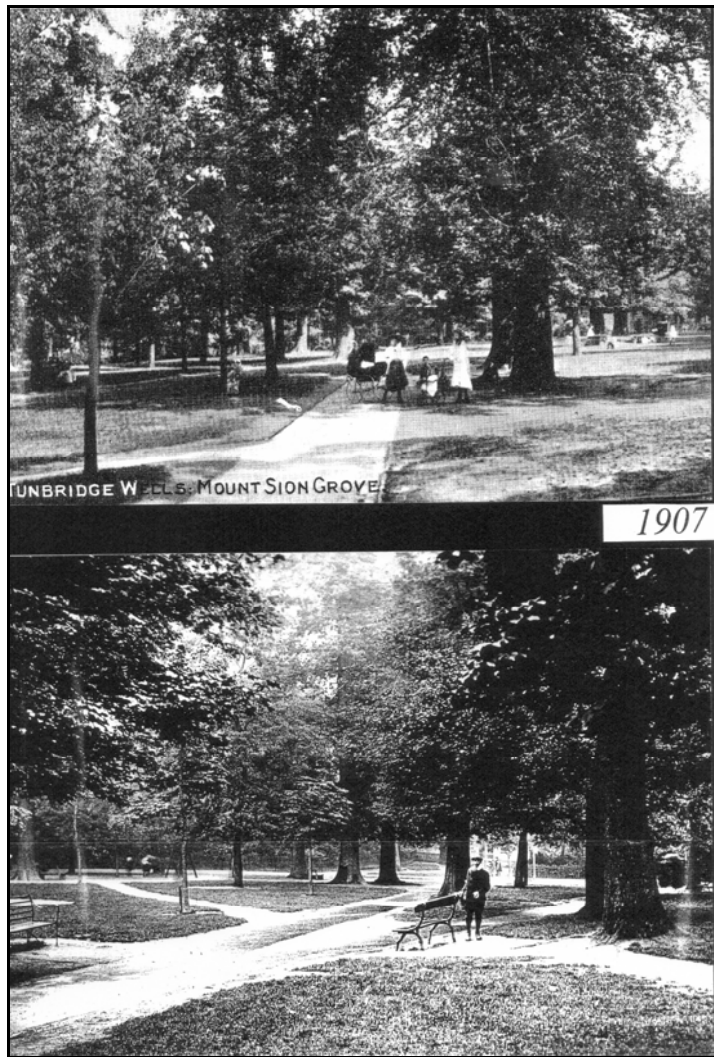


Fig. 15 Extract from plant list 1864-68 from Rev. W. L. Pope, *A Word About the Grove* (1868).

Trees Planted in THE GROVE And fenced in From 1864 to 1868 ----- TREES		11
6 Elms	2 Arbutus	
5 Ash, common	1 Larch	
1 Ditto, Californian	3 Planes	
6 Ditto, Mountain	4 Hollies	
2 Tulip-trees	1 Yew	
7 Oaks, Turkish, &c	2 Scarlet Horse Chestnut	
4 Ditto, Scarlet American	1 Scarlet Elder	
1 Ailanthus	1 Crataegus Ovalifolia	
1 Alder	1 Ditto, Affinis	
2 Sycamore, Milky	3 Double White	
2 Poplars, Black Italian	3 Scarlet, Thorns	
1 Poplar, Balsam	2 American Maples	
1 Ditto, Hoary	~~~~~	
3 Acacias		
3 Lyburnam		
4 Birches		
6 Firs, Scotch		
1 Ditto, Australia		
2 Shumacs		

Kent Compendium of Historic Parks & Gardens – 2009 review of Tunbridge Wells Borough

Fig. 16 Photographs of The Grove February 2009



Above left: Entrance from Birdcage Walk

Above right: 19th century trees

Left: Secondary paths