

Fig. 7 Edward Hasted map Speldhurst 1778



Fig. 8 William Mudge, *An Entirely new and accurate survey... 1801*



Fig. 9 Charles Greenwood, *Map of the County of Kent* 1821



Fig. 10 Ordnance Survey 1st edn 25" map (1870)

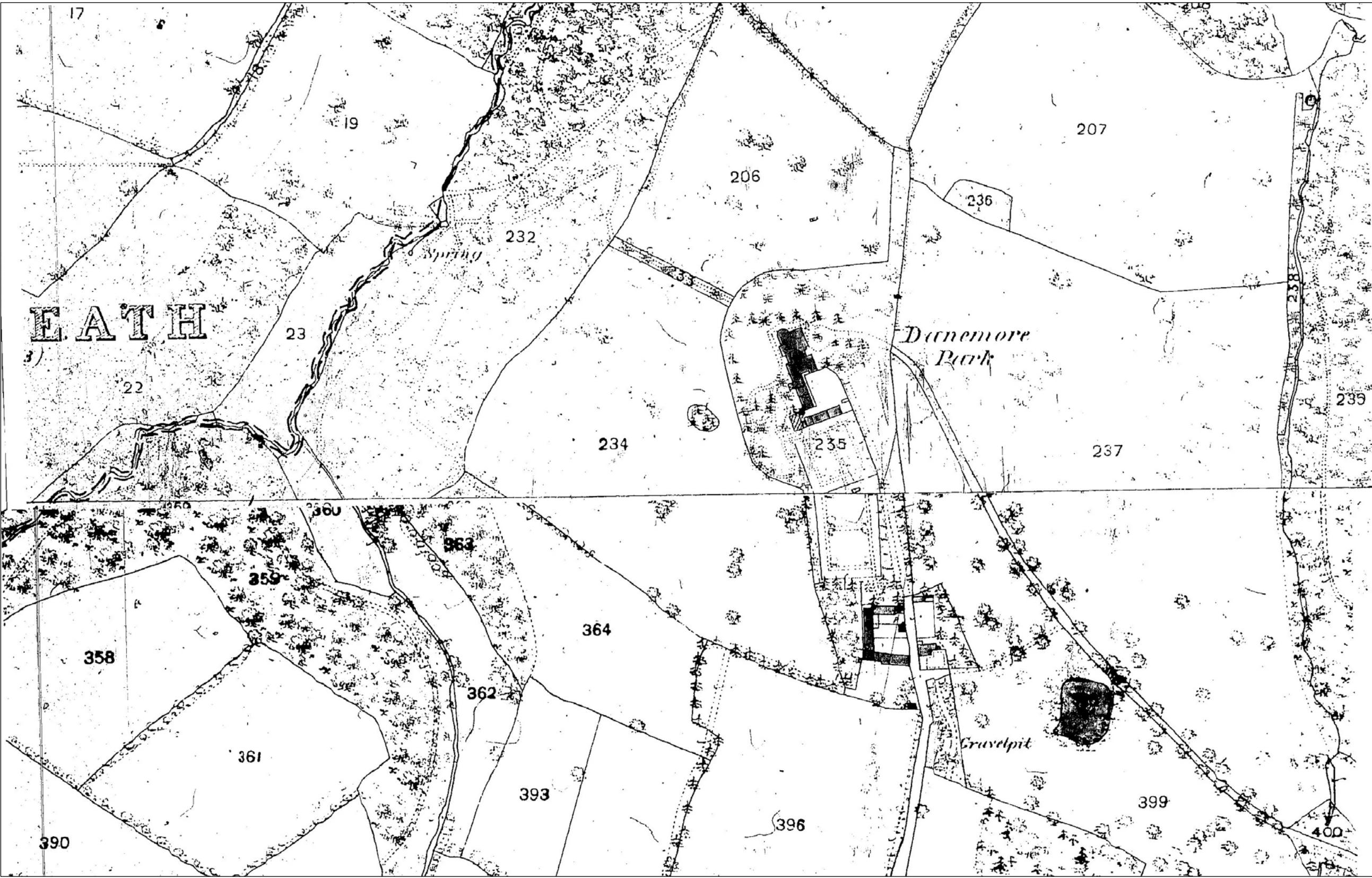


Fig. 11 Ordnance Survey 2nd edn 6" map (1897)

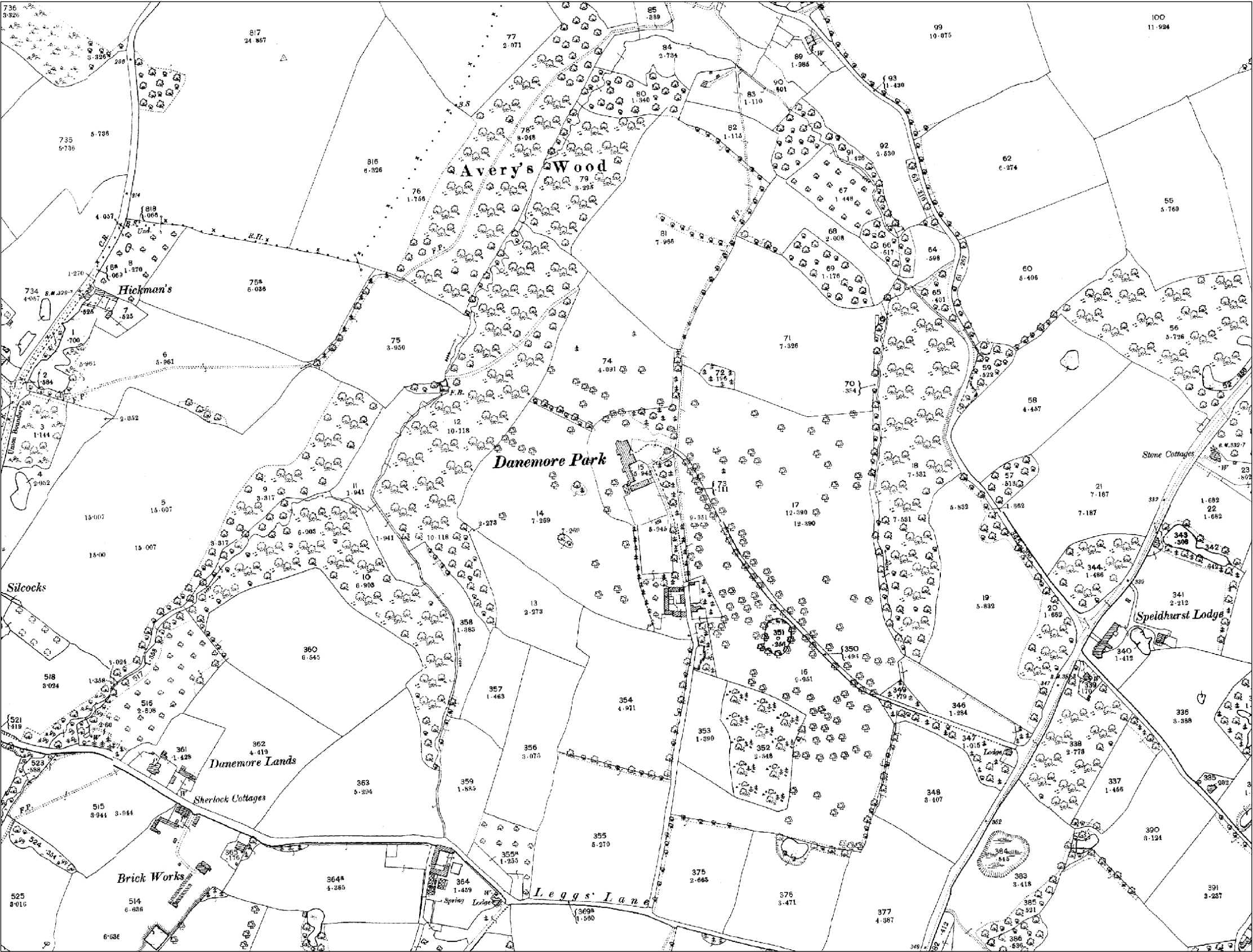


Fig. 12 Ordnance Survey 3rd edn 25" OS map (1909)

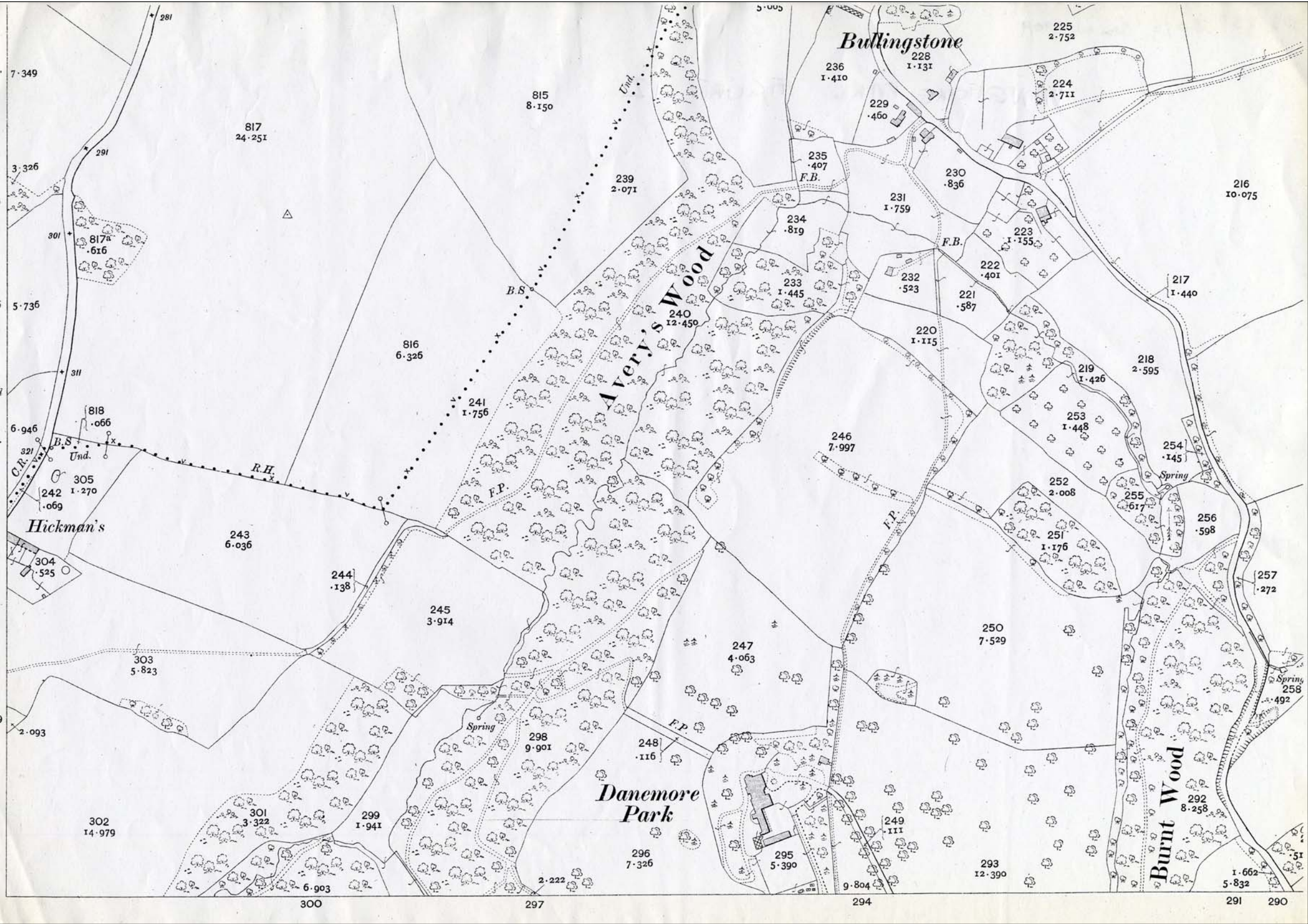


Fig. 13 Ordnance Survey revd edn 25" OS map (1936)

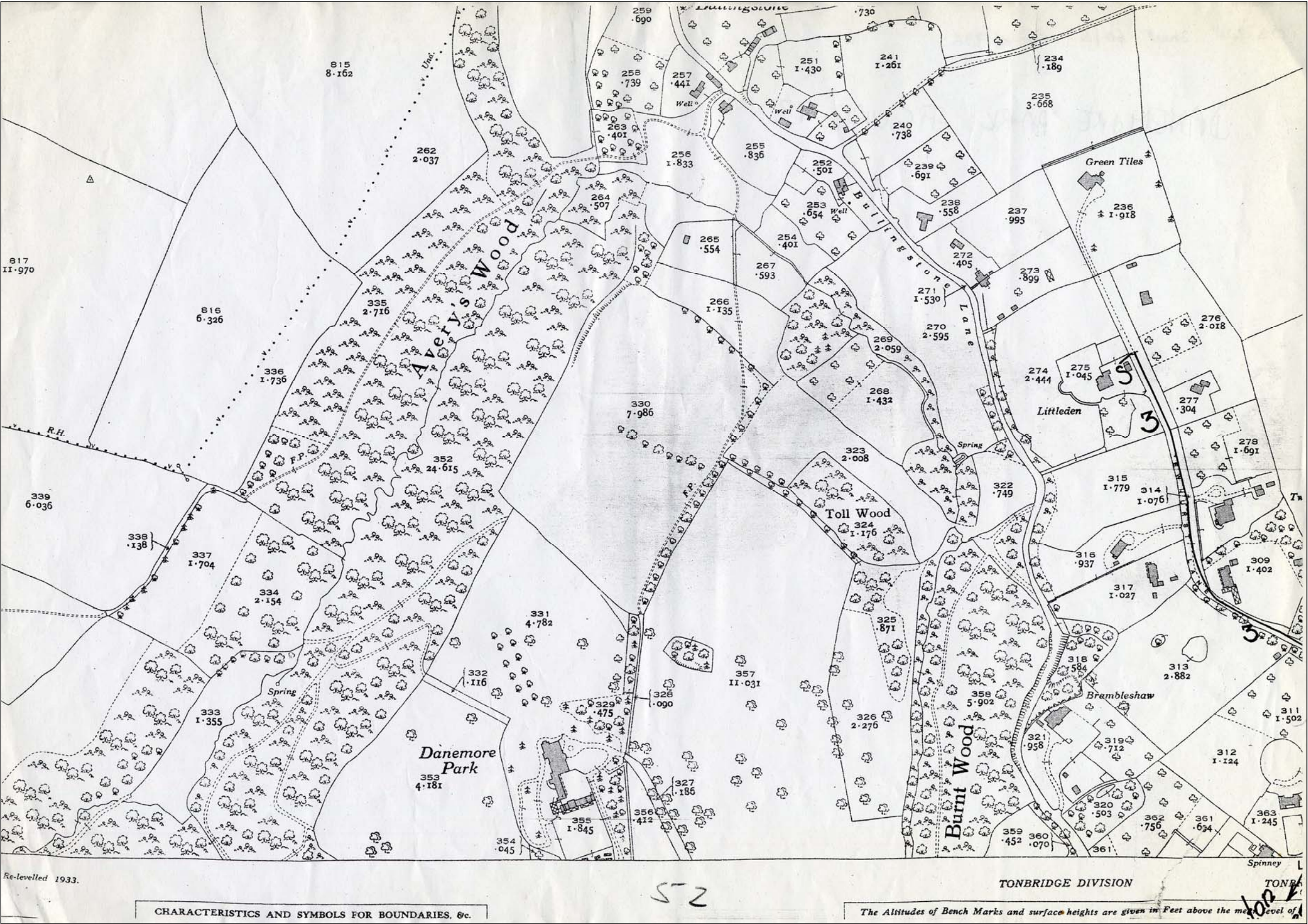


Fig. 14 Jellicoe's design for Danemore Park terrace garden 1986



Kent Compendium of Historic Parks & Gardens – 2009 review of Tunbridge Wells Borough

Fig. 15 4 colour photographs of the newly completed terrace 1991



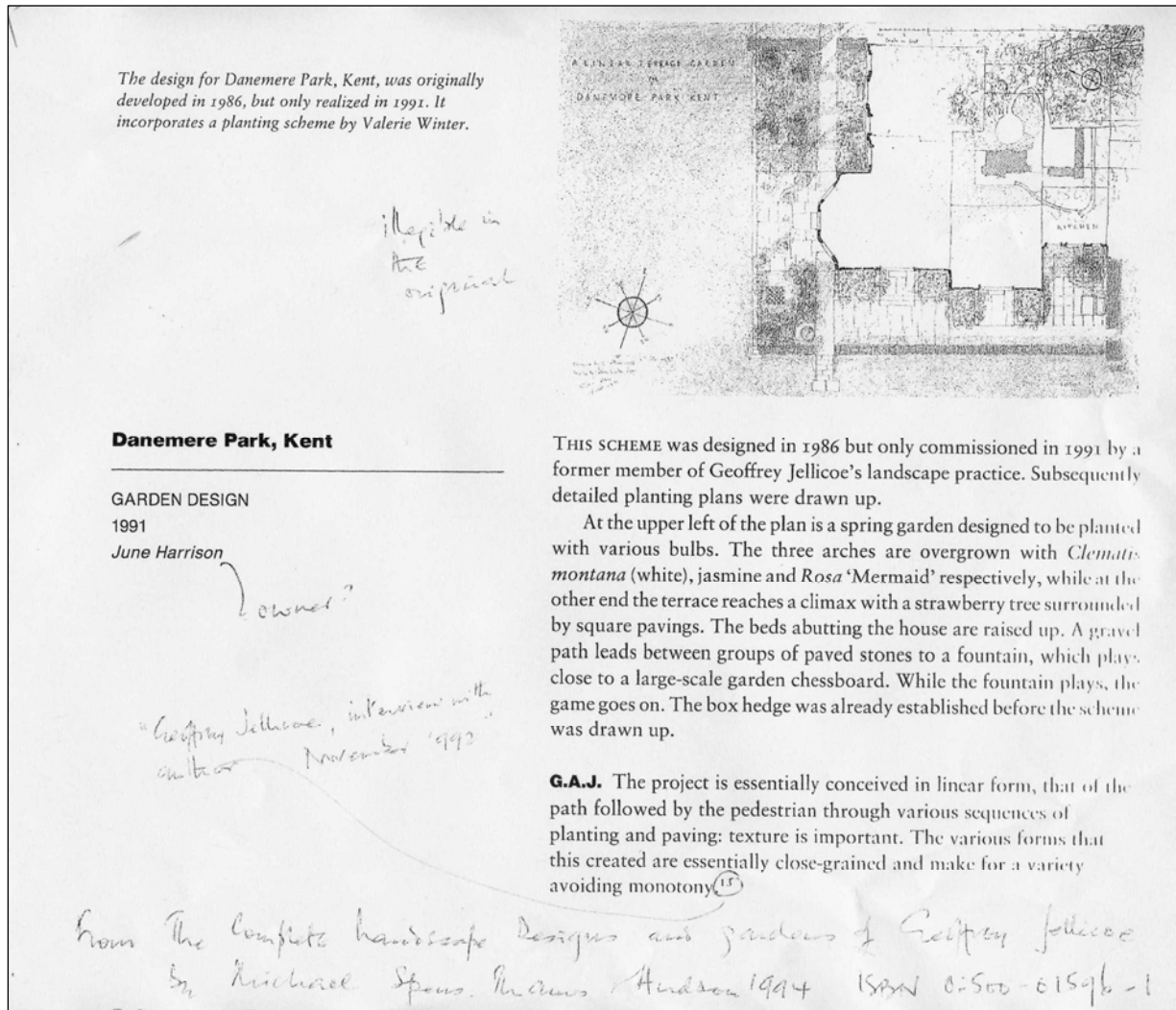
Kent Compendium of Historic Parks & Gardens – 2009 review of Tunbridge Wells Borough

Fig. 16 Census data 1861-1901

Name	Rel to Head	State	Age	Occupation	Employer or worker	Where born	Special
1861							
Geo Adair	H	M	43	Barrister (not practising)		Dublin	
Emily Ann Adair	W	M	28				
Henry William “	S		4			London	
1871							
David Cornell	H	M	73	Coachman			Felford, Essex
Mary “	W	M	83				
Annie “	G/d	U	20	Dairymaid			Wallington
1871 Dane More Farm House							
John Bushell				Bailiff			
Family							
1881							
James B Reeves	H	U	54	Income Dividends int			London
Ann “	Sis	U	49				
2 housemaids				1 cook + 1 kitchen maid			
Rooms of stables:							
David & Annie Cornell							
Farm:							
David Cornell jnr				Farm bailiff			
1891							
James Bowles Reeves	H	U	64	Own means			London
Anna M E “	Sis	U	59				
5 servants							
1901							
James B Reeves	H	U	74	Own means			London East
Anna M E “	Sis	U	69				
4 servants							

Kent Compendium of Historic Parks & Gardens – 2009 review of Tunbridge Wells Borough

Fig. 17 Michael Spens, *The Complete Landscape Designs and Gardens of Geoffrey Jellicoe* (Thames & Hudson, 1994), p. 202



Kent Compendium of Historic Parks & Gardens – 2009 review of Tunbridge Wells Borough

Fig. 18 Photographs of Danemore Park January 2009



Above: Drive



Above: Raised beds



Above: View along the rhododendron walk