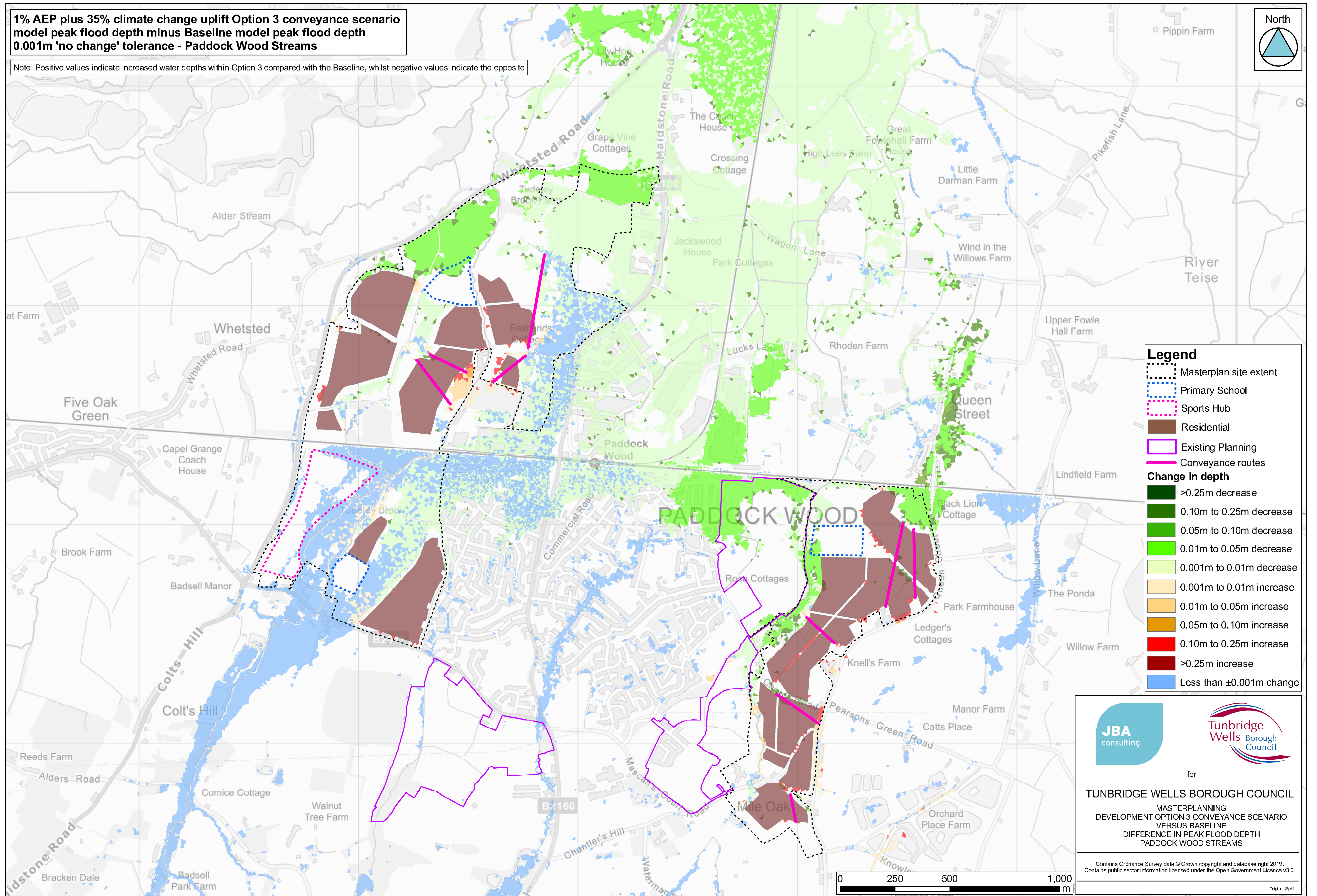
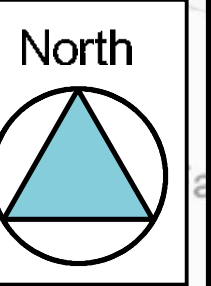


1% AEP plus 35% climate change uplift Option 3 conveyance scenario model peak flood depth minus Baseline model peak flood depth 0.001m 'no change' tolerance - Paddock Wood Streams

Note: Positive values indicate increased water depths within Option 3 compared with the Baseline, whilst negative values indicate the opposite



Legend

- Masterplan site extent
- Primary School
- Sports Hub
- Residential
- Existing Planning
- Conveyance routes

Change in depth

- >0.25m decrease
- 0.10m to 0.25m decrease
- 0.05m to 0.10m decrease
- 0.01m to 0.05m decrease
- 0.001m to 0.01m decrease
- 0.001m to 0.01m increase
- 0.01m to 0.05m increase
- 0.05m to 0.10m increase
- 0.10m to 0.25m increase
- >0.25m increase
- Less than ±0.001m change



for
TUNBRIDGE WELLS BOROUGH COUNCIL
 MASTERPLANNING
 DEVELOPMENT OPTION 3 CONVEYANCE SCENARIO
 VERSUS BASELINE
 DIFFERENCE IN PEAK FLOOD DEPTH
 PADDOCK WOOD STREAMS

Contains Ordnance Survey data © Crown copyright and database right 2019.
 Contains public sector information licensed under the Open Government Licence v3.0.

