

Fig. 6 Christopher Saxton, *Sussex, Surry and Kent* 1575.



Fig. 7 Philip Symonson, *Map of Kent* 1596

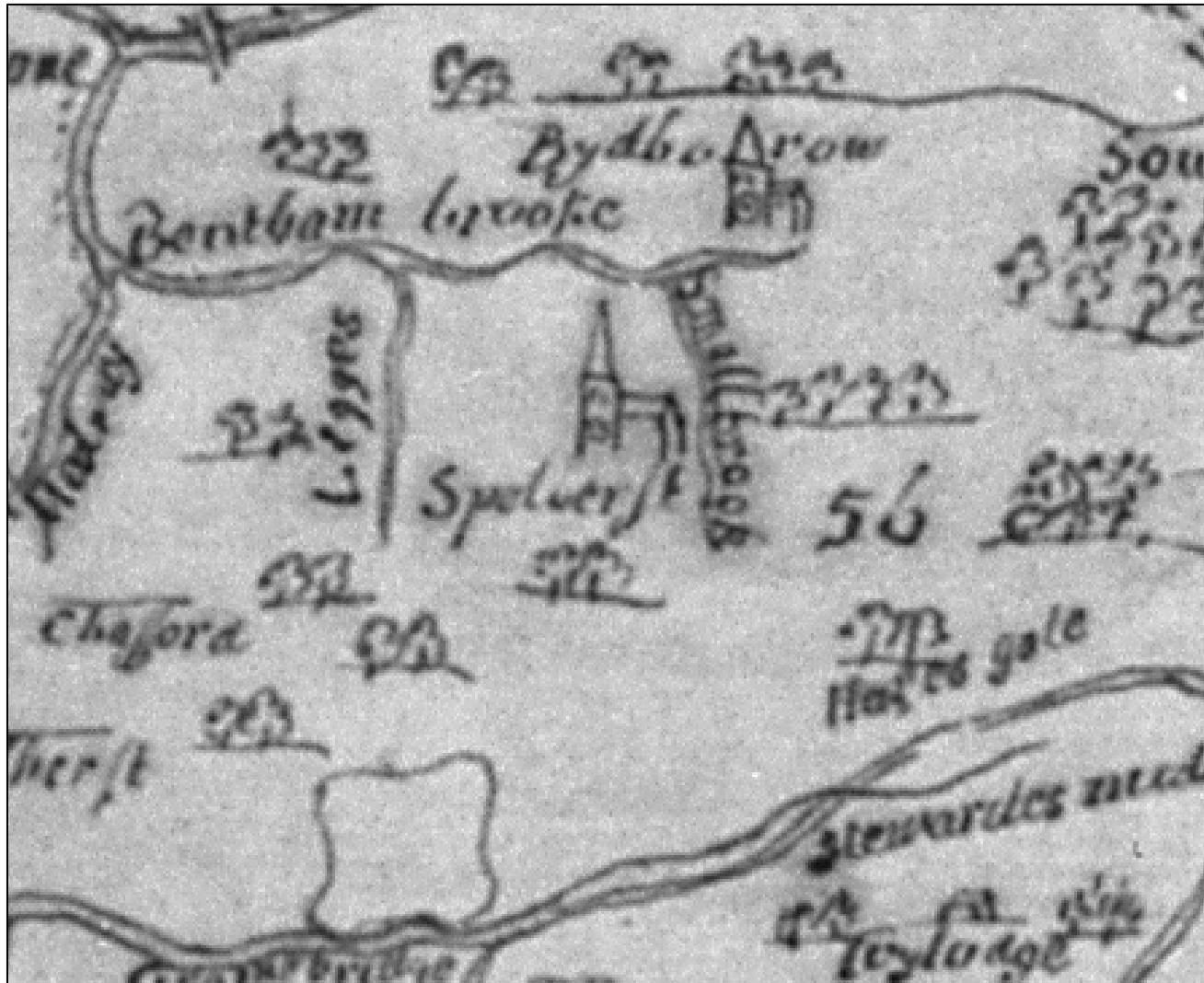


Fig. 8 Samuel Parker, *A Map of the County of Kent* 1719.



Fig. 9 Edward Hasted map of Bidborough 1778



Fig. 10 William Mudge, *A New and Accurate Survey of Kent* 1801.



Kent Compendium of Historic Parks & Gardens – 2009 review of Tunbridge Wells Borough

Fig. 11 Tithe map 1840



Fig. 12 Ordnance Survey 1st edn 25" map (1866). Sheet 60/7.

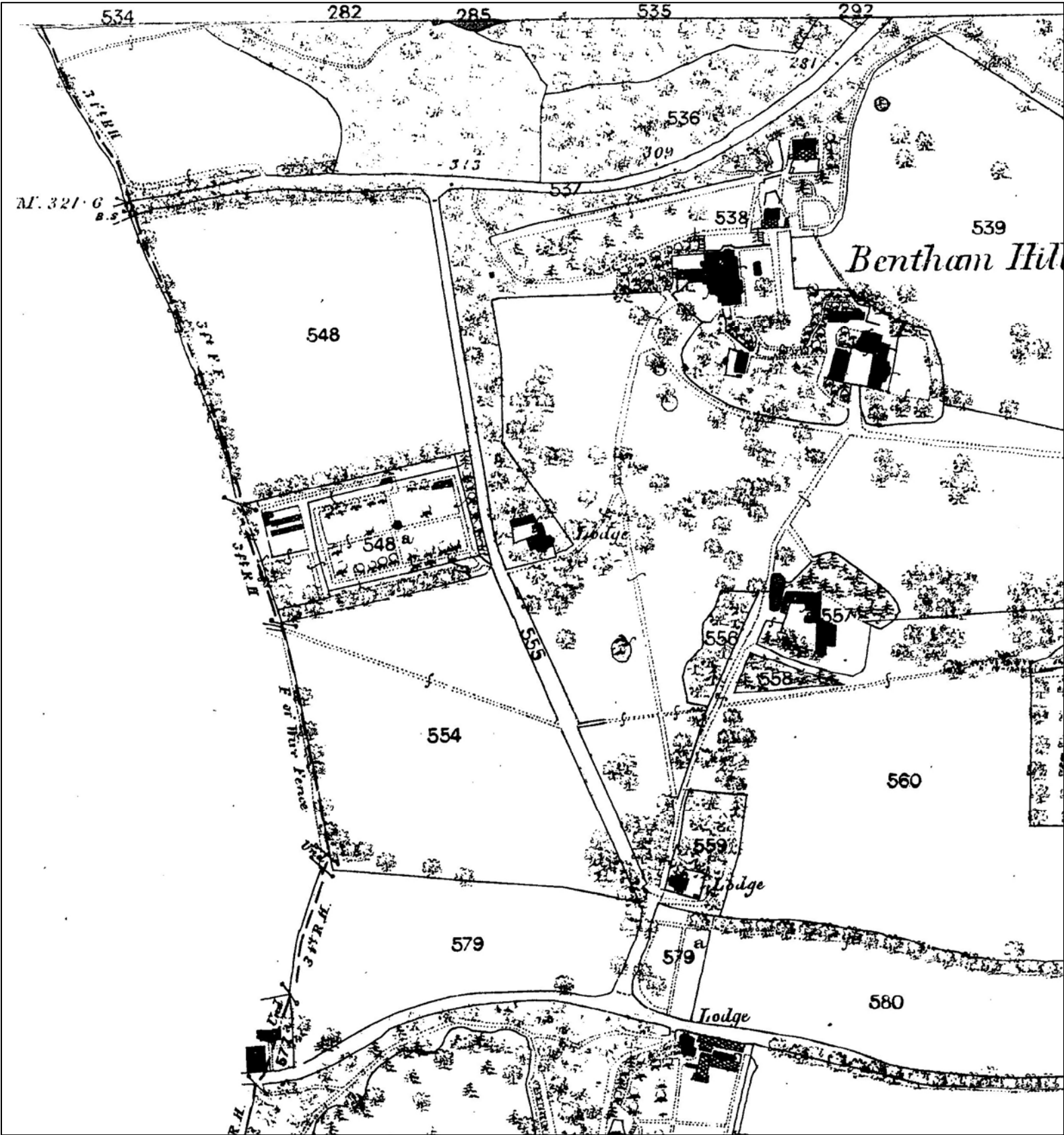


Fig. 13 Ordnance Survey 2nd edn 25" map (1898) Sheet 60/7.

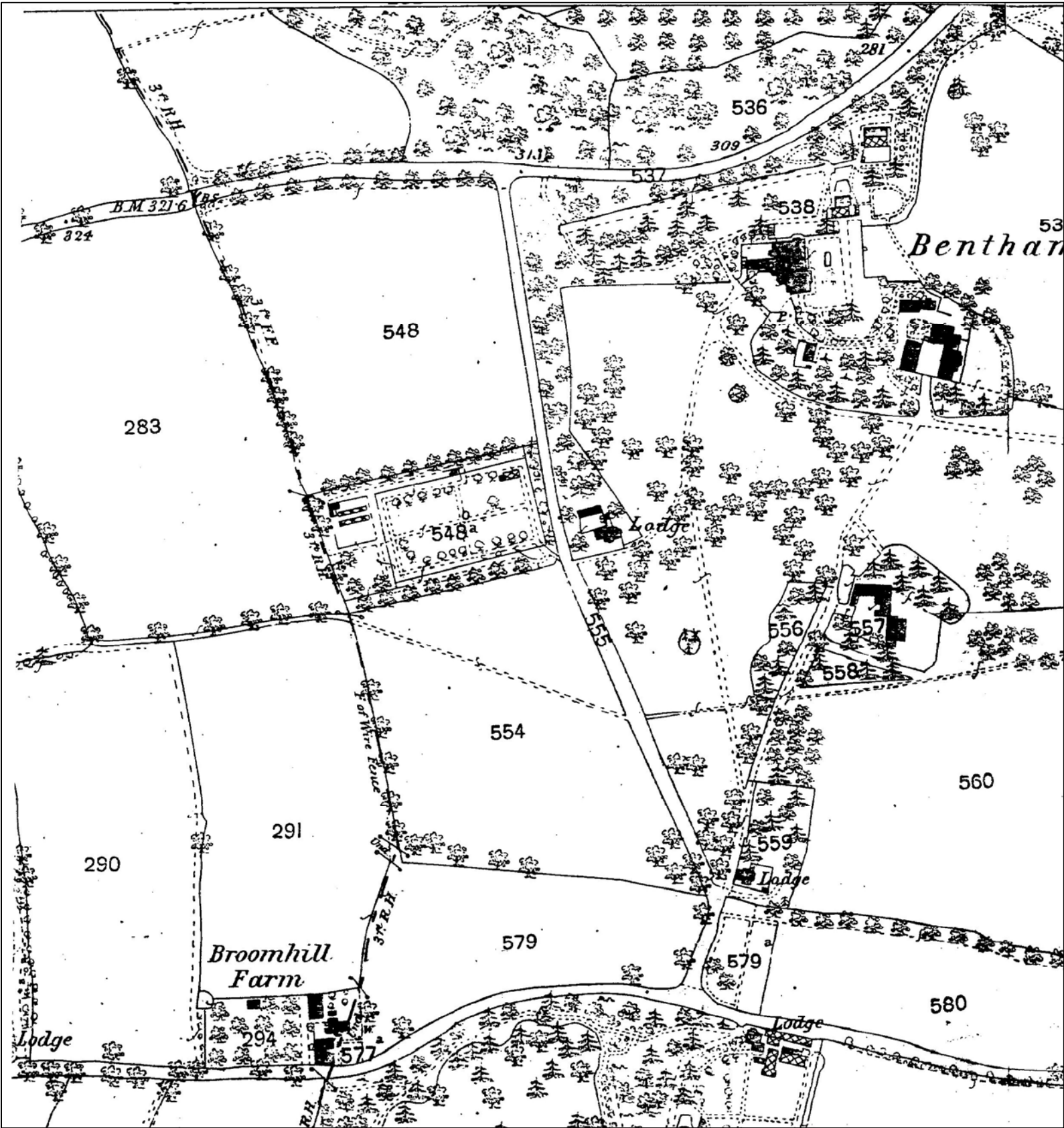


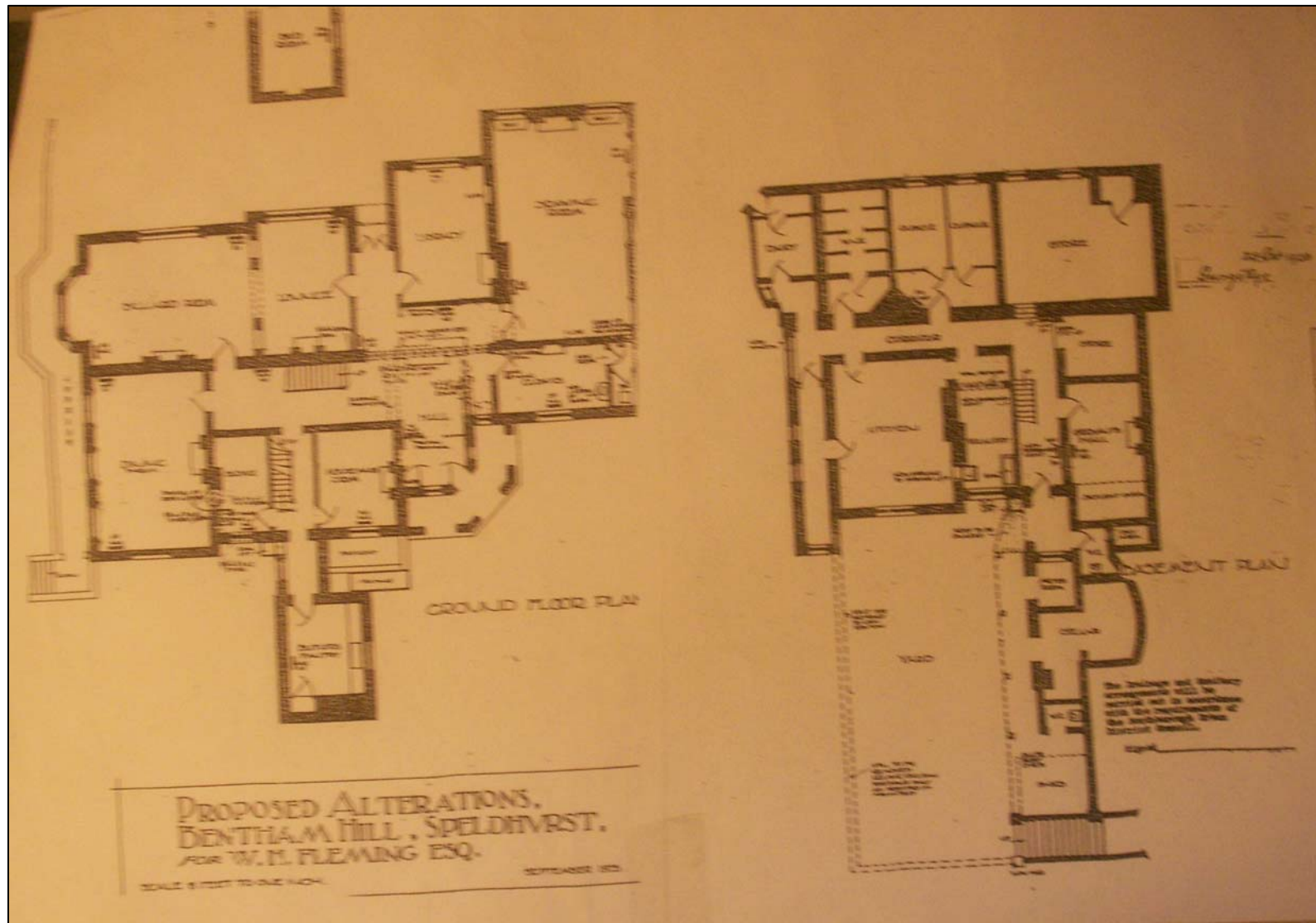
Fig. 14 Ordnance Survey 3rd edn 25" map (1909). Sheet 60/7.



Fig. 15 Ordnance Survey Revd edn 25" map (1936). Sheet 60/7.



Fig. 16 *Proposed Alterations Bentham Hill, Speldhurst for W. H. Fleming Esq 1920s in Philip Whitbourn, Decimus Burton 1800-81: architect and gentleman (2003).*



Kent Compendium of Historic Parks & Gardens – 2009 review of Tunbridge Wells Borough

Fig. 17 Bentham Hill House bedecked with bunting to welcome home Robert Pott from Boer War 1901 from Chris McCooey, *Images of England: Southborough and High Brooks* (1998).

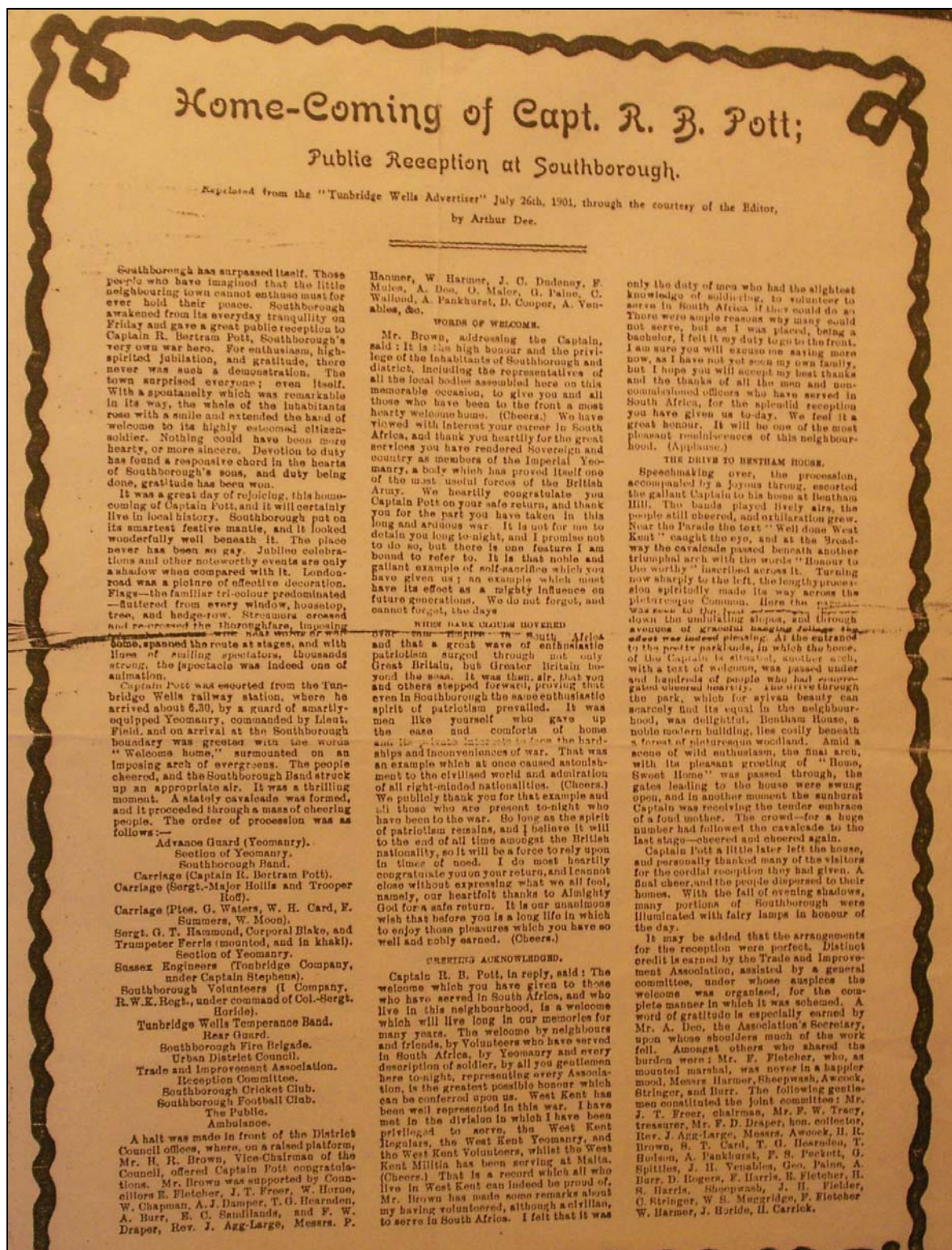


Kent Compendium of Historic Parks & Gardens – 2009 review of Tunbridge Wells Borough

Fig. 18 images of Bentham Hill House 1909/10 reproduced in A. M. McFarlane, *Southborough and High Brooms in Old Picture Postcards* (European Library, 1997), figs 61 and 62.



Fig. 19 Arthur Dee, 'Home-Coming of Capt. R. B. Pott; Public Reception at Southborough', *Tunbridge Wells Advertiser* (26 July 1901).



Kent Compendium of Historic Parks & Gardens – 2009 review of Tunbridge Wells Borough

Fig. 20 Photographs of Bentham Hill House January 2009.

Below: Entrance front



Below: Cedars and Wellingtonia in the park



Below: The north front

